



🛏 3 🚿 2 🏠 1,000 FT<sup>2</sup>

The 1100 Bungalow floor plan is a 3 bed, 3 bath 1100 square foot home that provides a safe, modern, and tranquil place for buyers to call home. **LVP flooring throughout upgrades your home with durability and style.** Created with the first-time homebuyer or savvy investors in mind, residents can be situated within walking distance of exciting neighborhood amenities, premier school districts and downtown life in Southwest Missouri and Northwest Arkansas.



MACY

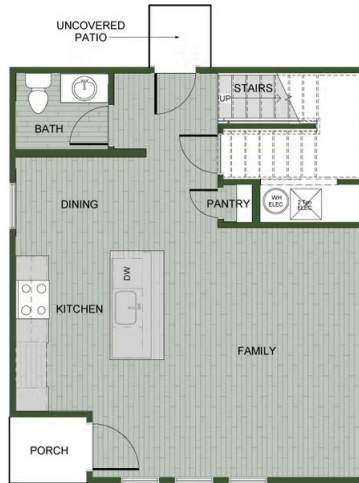


HANNAH



PAIGE





1ST FLOOR



2ND FLOOR - 2ND MASTER OPTION



2ND FLOOR - 3 BEDROOM OPTION