



 3
  2
  2
  1,714 FT<sup>2</sup>

This 3 bed, 2 bath 1714 square foot floor plan is customizable to your needs. Take your pick from a flexible living space, coffee bar, or pocket office in this 1,700-square-foot home. The ability to choose from structural options to best suit your lifestyle makes this house a home! With an open-concept living space and covered patio, this house is perfect for entertaining. Complete with a large primary suite with dual closets!



KIMMIE



LISA

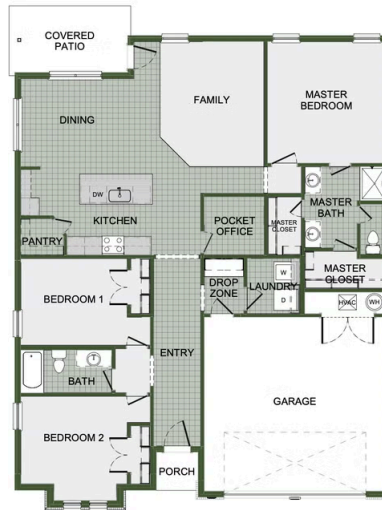




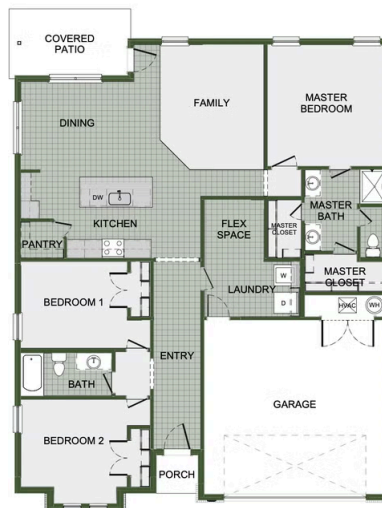
VICTORIA



MARIA

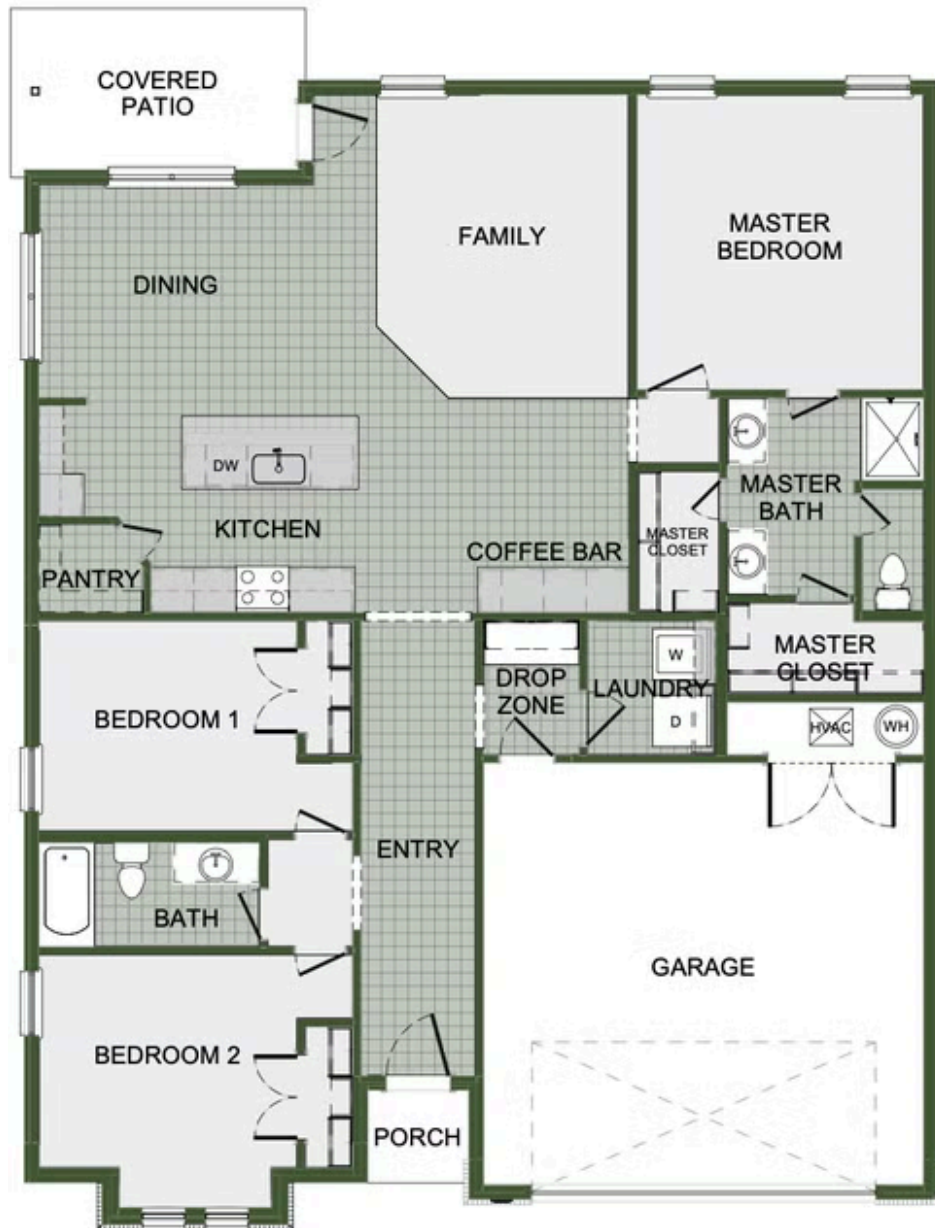


POCKET OFFICE OPTION



FLEX SPACE OPTION





COFFEE BAR OPTION