



FEATHERSTON WEST

# 1100-2 Bungalow

Floor Plan

STARTING AT \$226,000 2 2.5 1,093 FT<sup>2</sup>

The 1100 Bungalow floor plan is a 2 bed, 2.5 bath 1100 square foot home that provides a safe, modern, and tranquil place for buyers to call home. LVP flooring and carpet in your home with durability and style. Created with the first-time homebuyer or savvy investors in mind, residents can be situated within walking distance of exciting neighborhood amenities, premier scho...

## AMENITIES



SIDEWALKS



COMMUNITY  
POND



DOG PARK



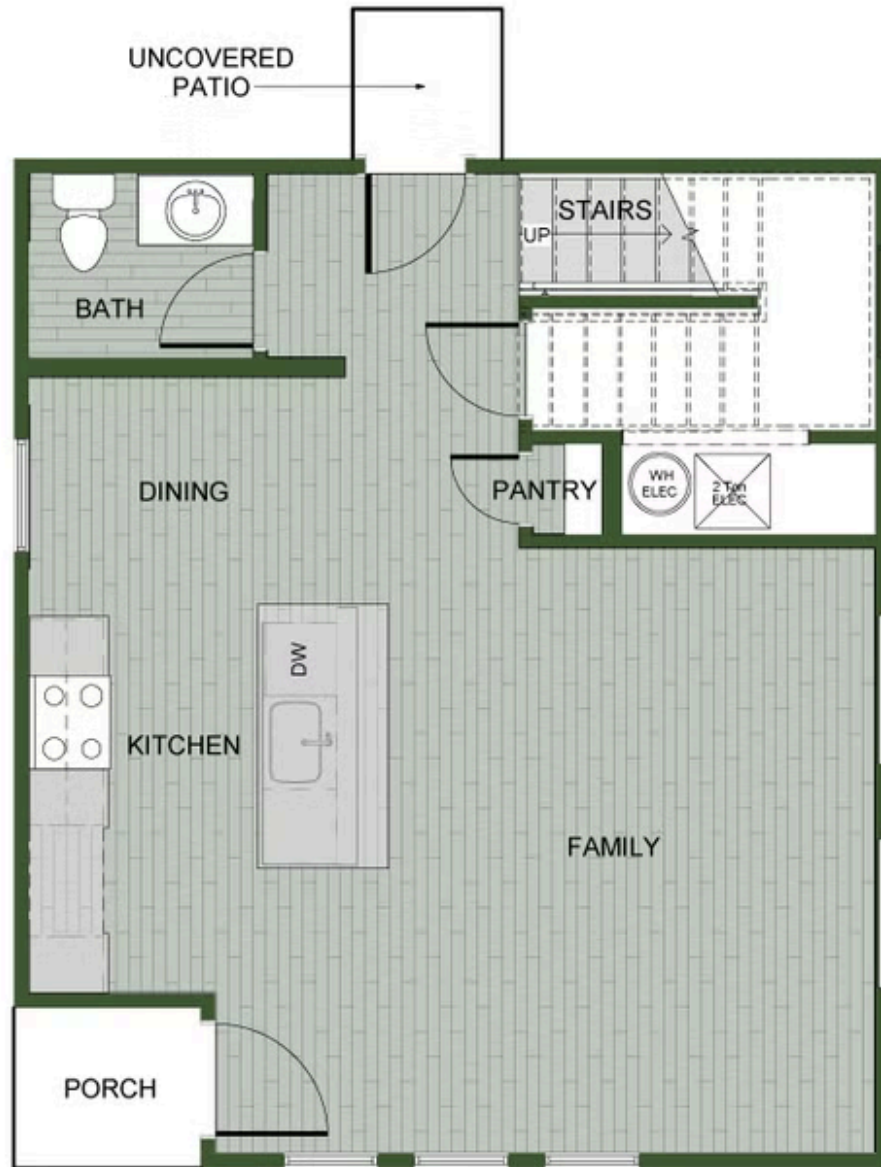
WALKING  
TRAIL



PARK



PICKLEBALL  
COURTS



1ST FLOOR



2ND FLOOR - 2ND MASTER OPTION