



STARTING AT **\$225,000** 🛏️ 2 - 3 🚿 2 - 2.5 🏠 1,093 FT²

The 1100 Bungalow floor plan is a 3 bed, 2 bath 1100 square foot home that provides a safe, modern, and tranquil place for buyers to call home. LVP flooring and carpet in your home with durability and style. Created with the first-time homebuyer or savvy investors in mind, residents can be situated within walking distance of exciting neighborhood amenities, premier school...

AMENITIES



SIDEWALKS



COMMUNITY
POND



DOG PARK



WALKING
TRAIL



PARK



PICKLEBALL
COURTS



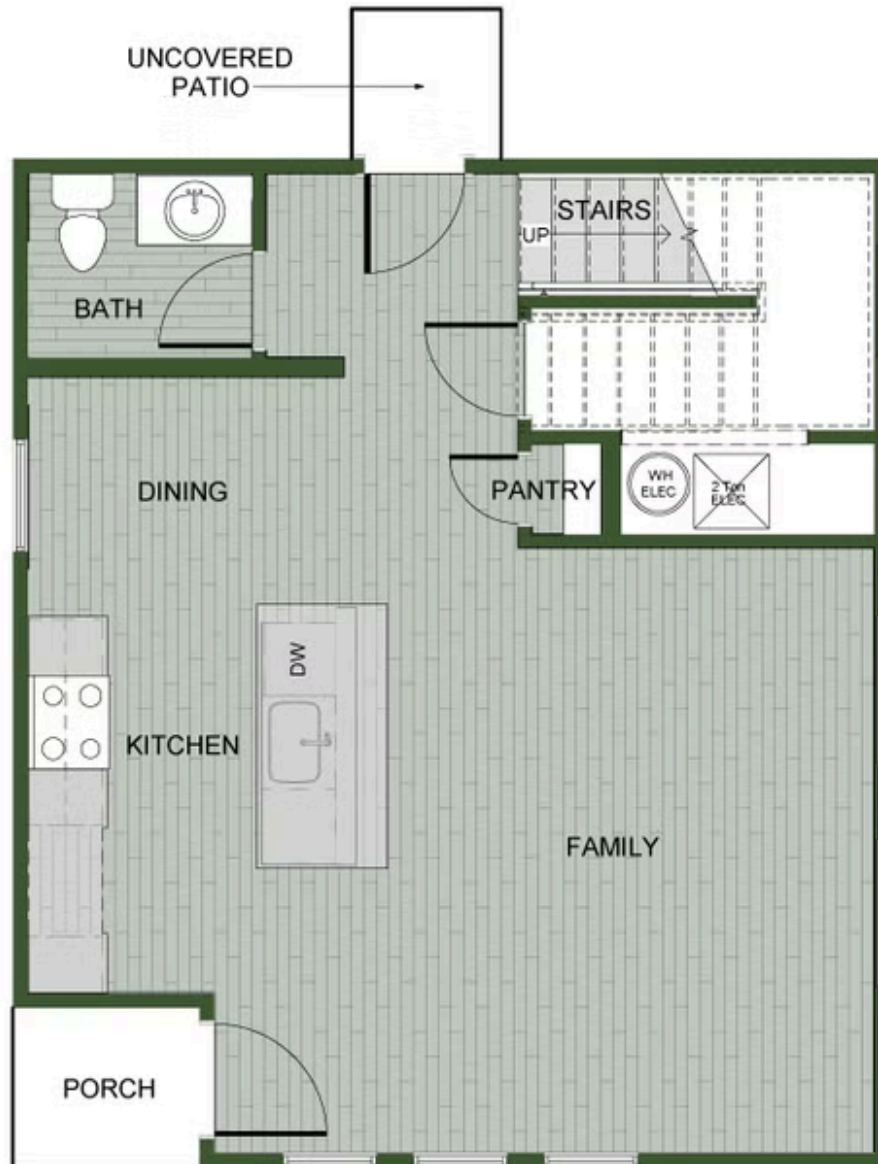
MACY



PAIGE



HANNAH



FIRST FLOOR



2ND FLOOR - 2 BEDROOM



2ND FLOOR - 3 BEDROOM