



STARTING AT **\$241,000** 🛏️ 2 - 3 🚿 2.5 🏠 1,233 FT²

This 2 bedroom, 2 1/2 bath 1250 square foot Bungalow Collection floor plan provides a safe, modern and tranquil place for buyers to call home. LVP flooring and carpet in your home with durability and style. Created with the first-time homebuyer or savvy investors in mind, residents can be situated within walking distance of exciting neighborhood amenities, premier school ...

AMENITIES



SIDEWALKS



COMMUNITY
POND



DOG PARK



WALKING
TRAIL



PARK



PICKLEBALL
COURTS



KENDRA



TORI

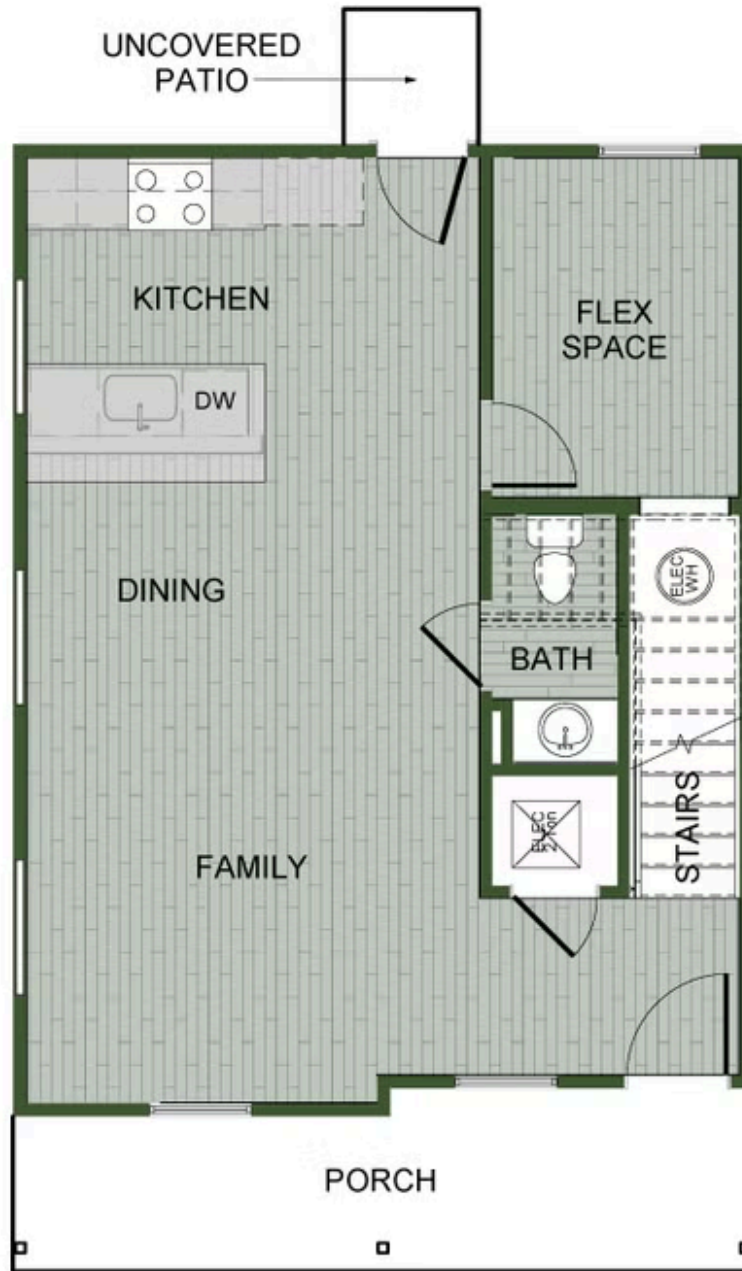


FEATHERSTON WEST
1250 Bungalow
Floor Plan

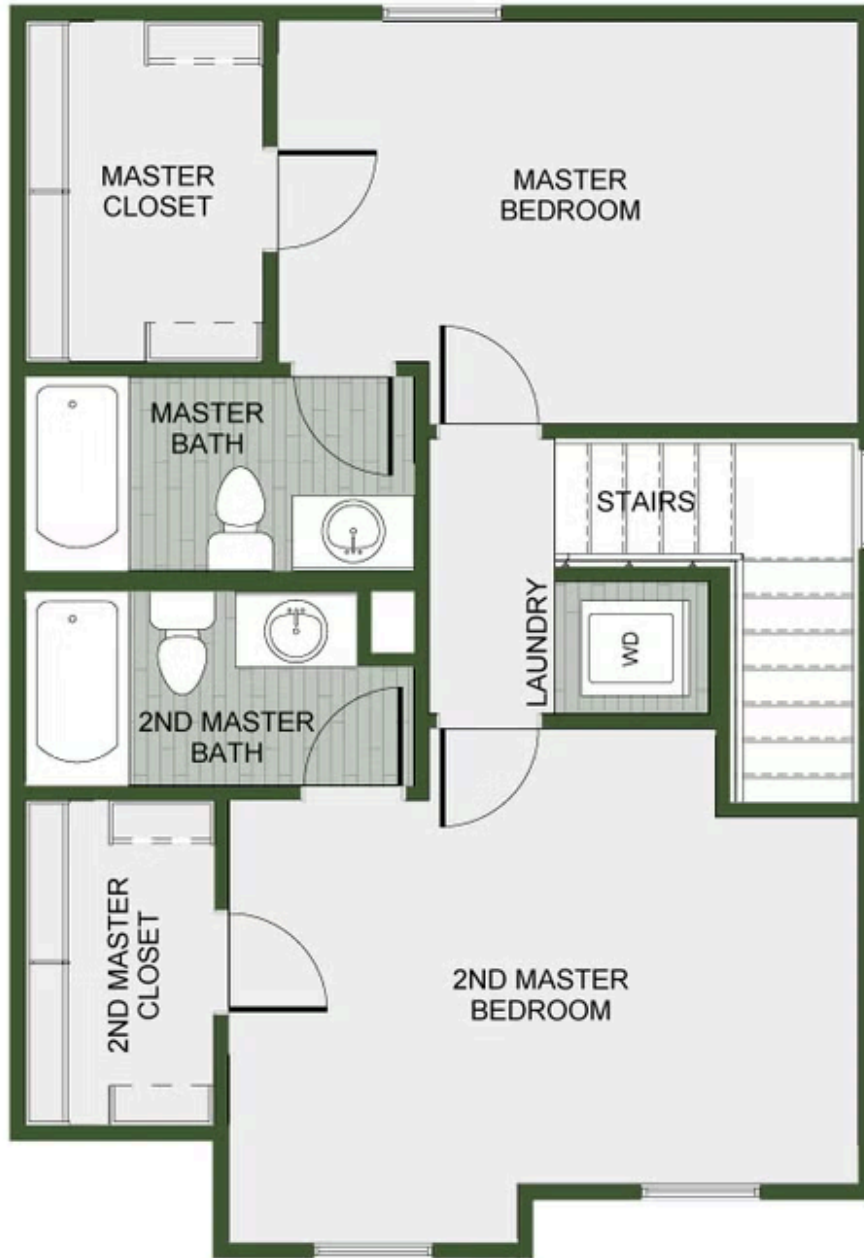


ARDEN

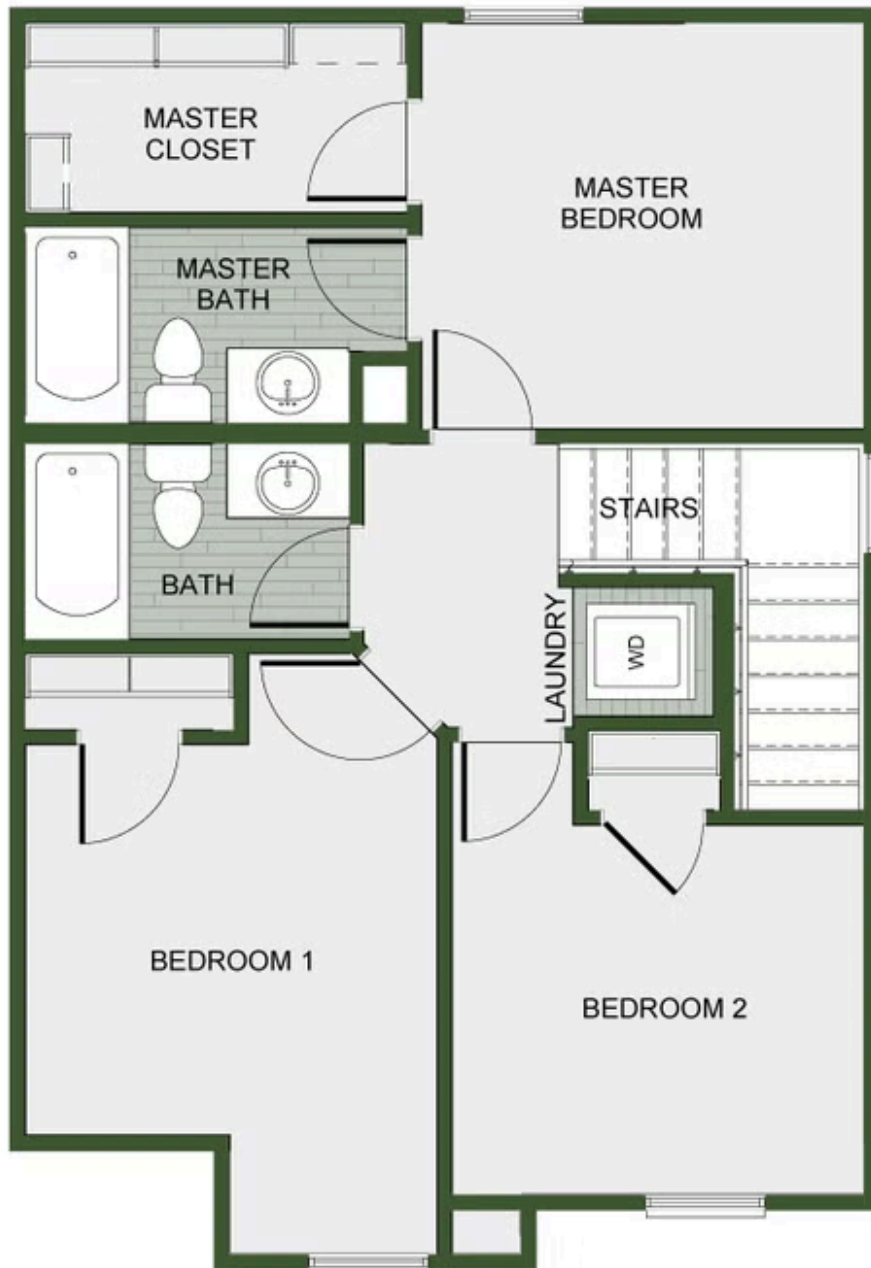




1ST FLOOR



2ND FLOOR - 2ND MASTER OPTION



2ND FLOOR - 3RD BEDROOM OPTION