



WOODCREST WALK

2575

Floor Plan

STARTING AT \$501,000  5  3  2  2,572 FT²

The 2575 floorplan features a 4 to 5 bedroom, 3-bathroom with over 2,500 square feet of living space. This premium floorplan is designed to elevate your living experience with its exceptional features and thoughtful design. Step into a home with impressive 15' high vaulted ceilings, complemented by a stylish stained box beam, and 8' tall front and back doors that enhance ...

AMENITIES



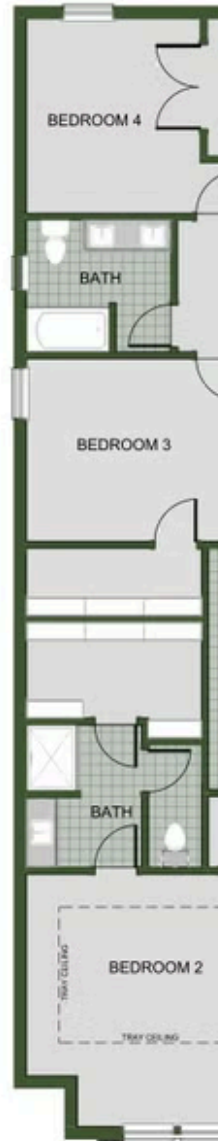
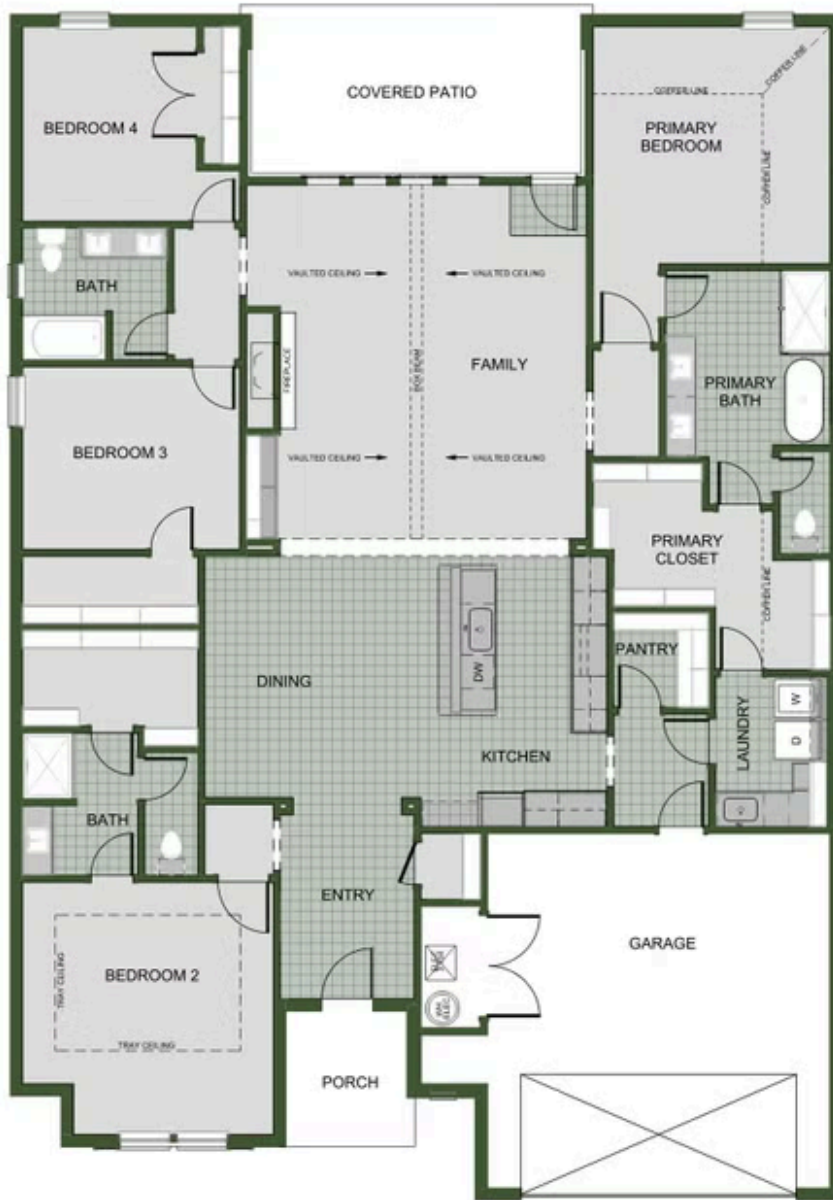
SIDEWALKS



COMMUNITY
POND



GREENSPACE



2ND MASTER SUITE

