



HILLCREST SUBDIVISION

2000-3C

Floor Plan

STARTING AT \$400,000  3 - 4  2  3  2,000 FT²

This 2000-square-foot home offers a comfortable blend of style and functionality, featuring a 3-car garage and the flexibility of 3 or 4 bedrooms to suit your family's needs. The kitchen includes a corner pantry, generous counter space, and bar seating, all flowing naturally into the dining and living areas to create an easy, open environment for everyday living or hos...

AMENITIES

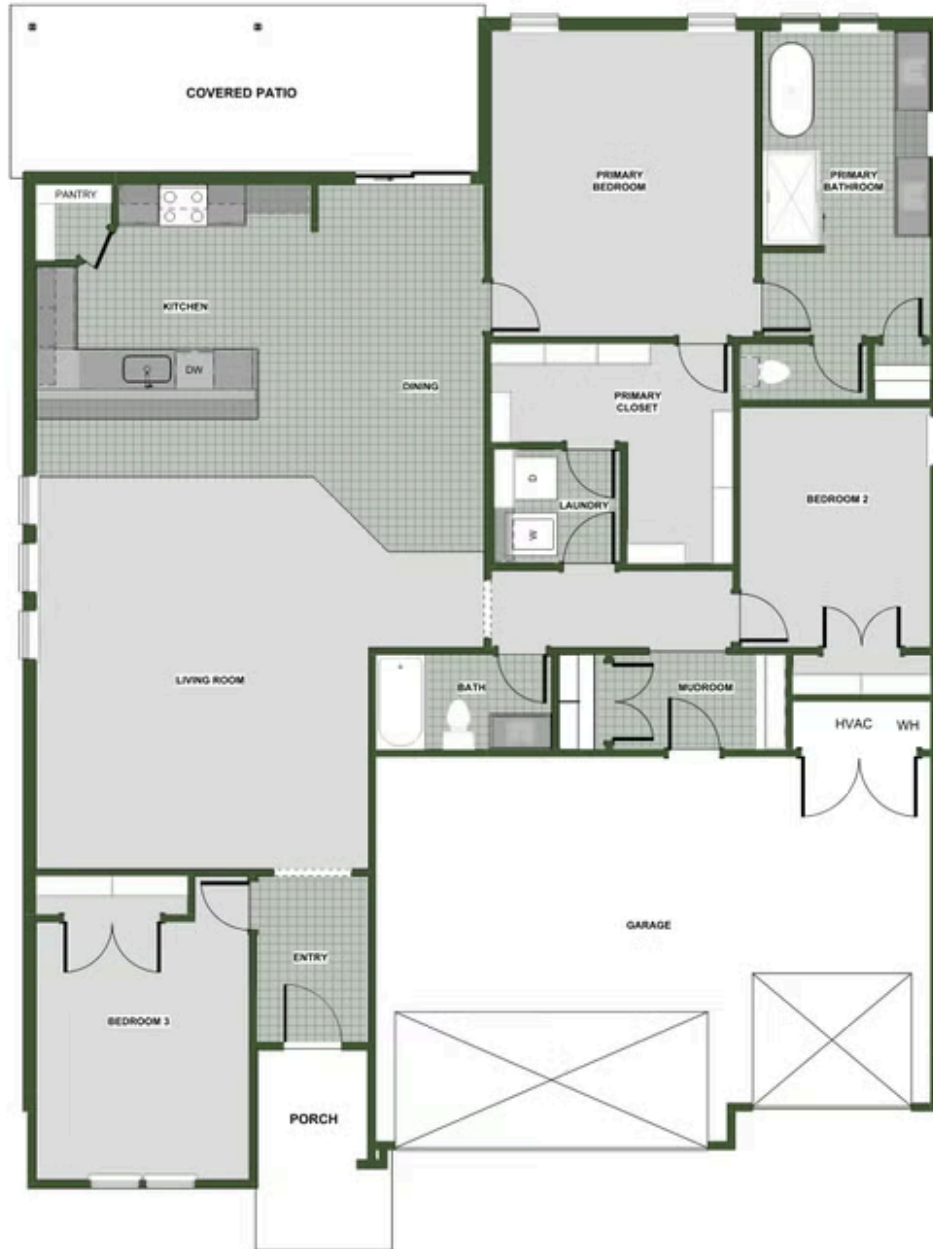


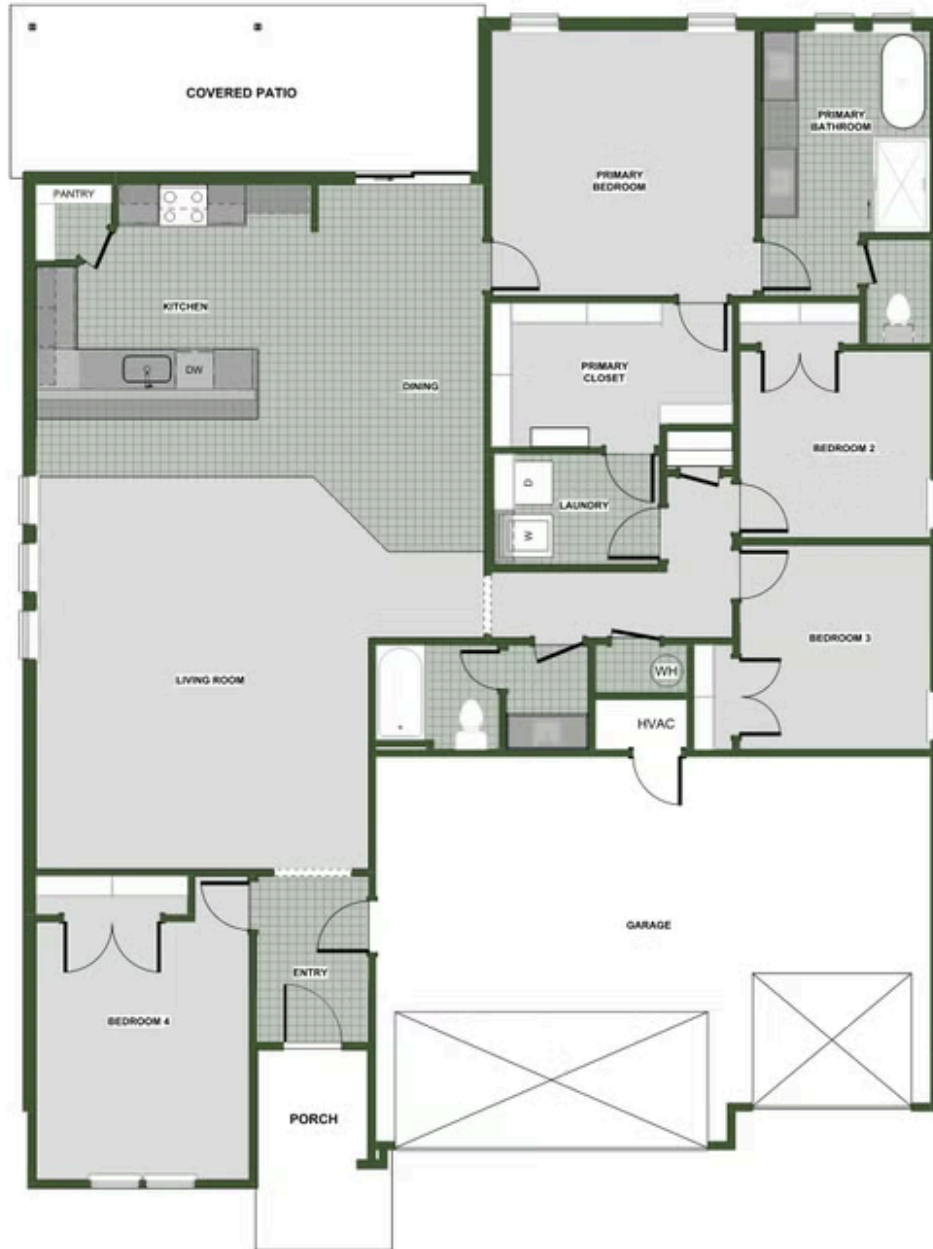
SIDEWALKS



COMMUNITY
POND







4TH BEDROOM OPTION