



HILLCREST SUBDIVISION

2290 Harvest Falls Ln.

Farmington, AR 72730

PRICED AT \$498,402  5  3.0  2  2572 FT<sup>2</sup>

The 2575 floorplan features a 4 to 5 bedroom, 3-bathroom with over 2,500 square feet of living space. This premium floorplan is designed to elevate your living experience with its exceptional features and thoughtful design. Step into a home with impressive 15' high vaulted ceilings, complemented by a stylish stained box beam, and 8' tall front and back doors that enhance ...

#### AMENITIES



SIDEWALKS

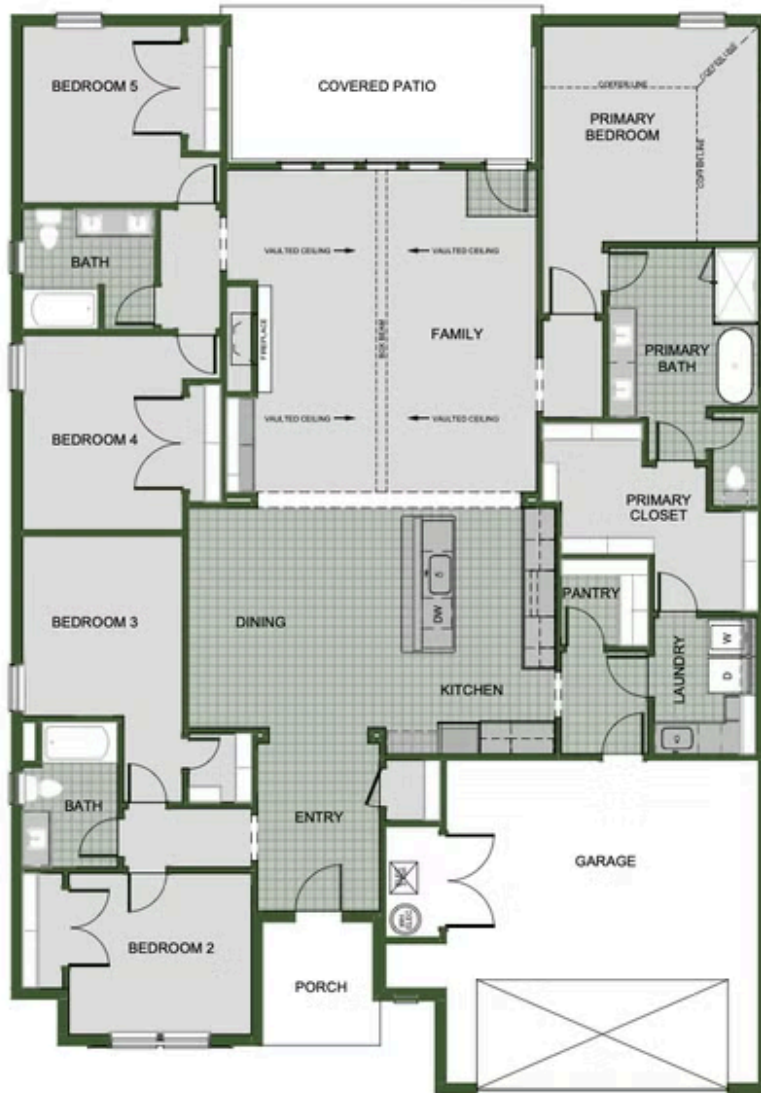


COMMUNITY  
POND





## 2ND MASTER SUITE



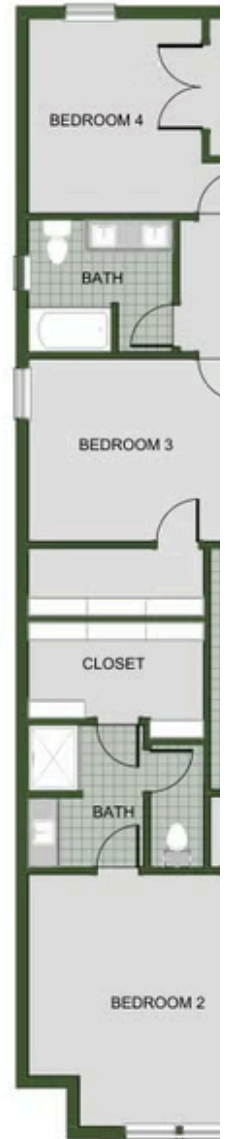
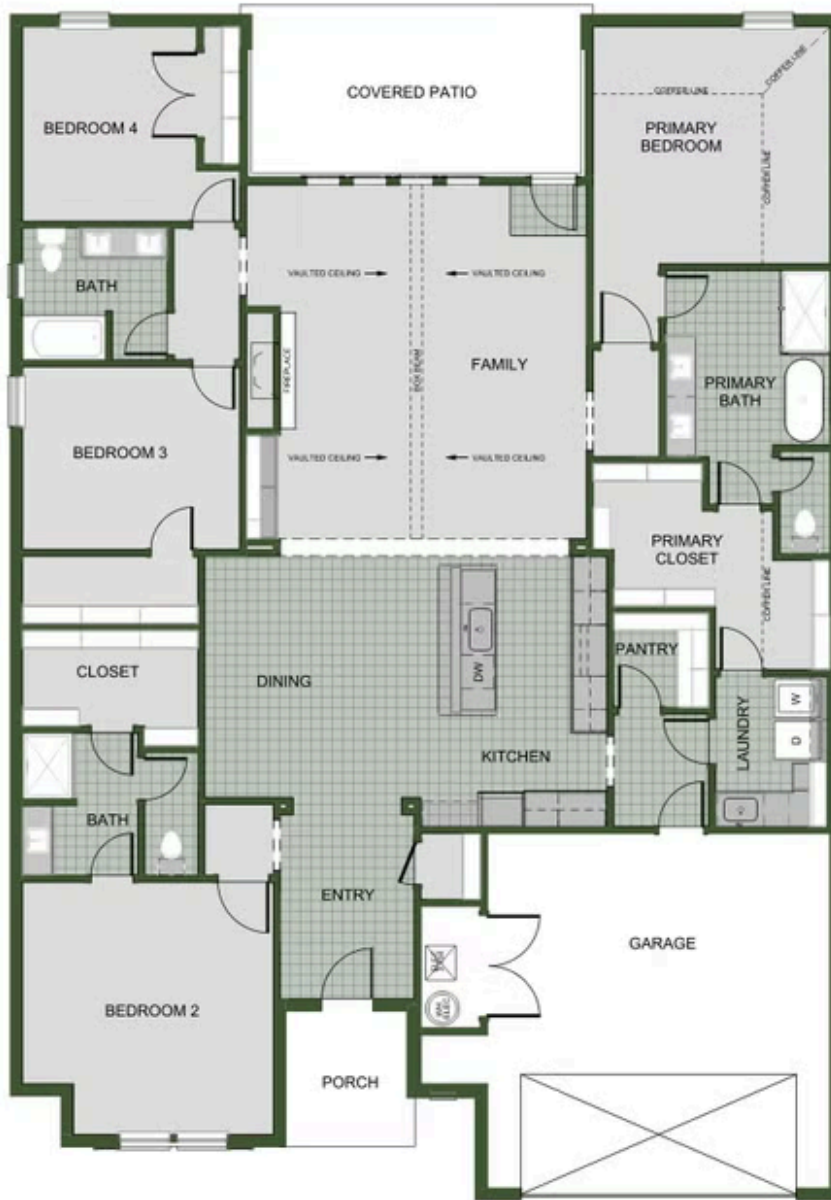
5TH BEDROOM



HILLCREST SUBDIVISION

2290 Harvest Falls Ln.

Farmington, AR 72730



Monday - Saturday: 10 am-6pm  
417-952-0369  
schubermitchell.com

Materials, specifications, plans, designs, prices, premiums, options & sales programs may change without notice or obligation. All renderings, floor plans, and maps are artist's conception and may not depict actual buildings, fencing, walks, driveways, or landscaping.

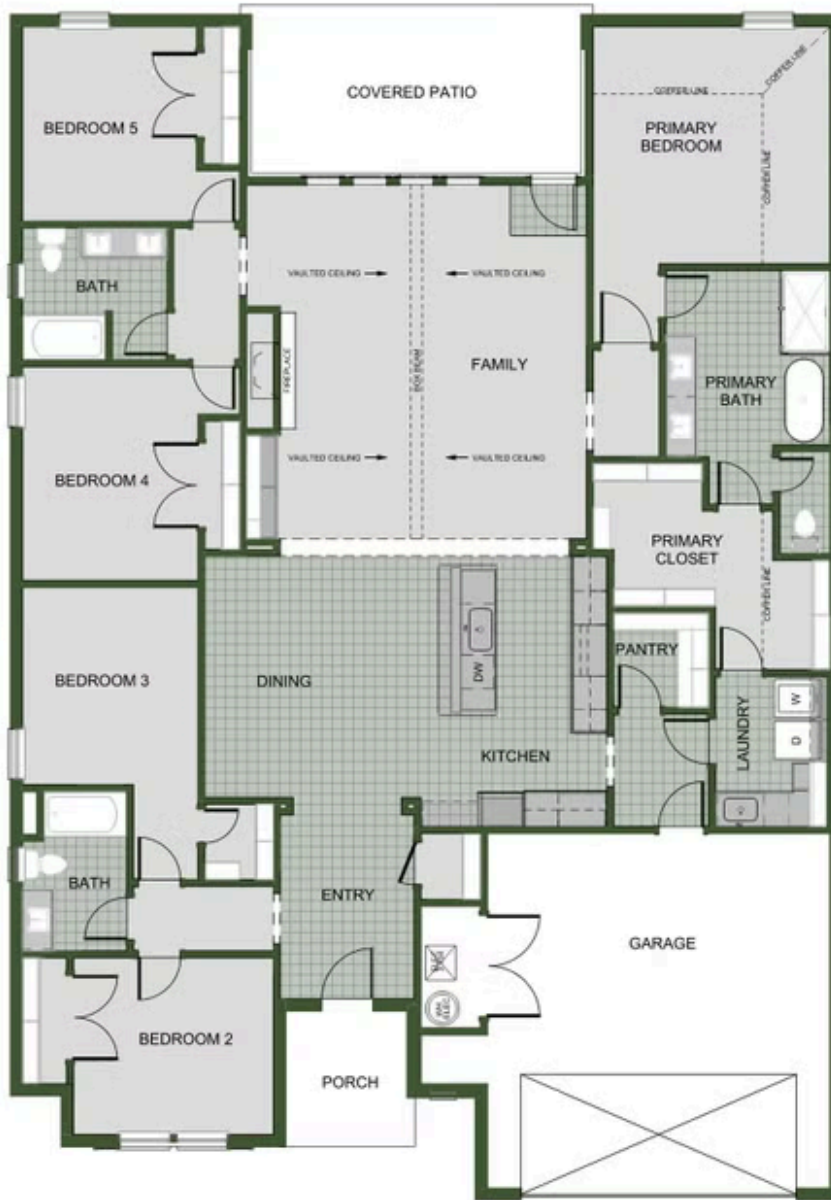




HILLCREST SUBDIVISION

2290 Harvest Falls Ln.

Farmington, AR 72730



Monday - Saturday: 10 am-6pm  
417-952-0369  
schubermitchell.com

Materials, specifications, plans, designs, prices, premiums, options & sales programs may change without notice or obligation. All renderings, floor plans, and maps are artist's conception and may not depict actual buildings, fencing, walks, driveways, or landscaping.







2ND MASTER SUITE