



TOWNE WEST

1714

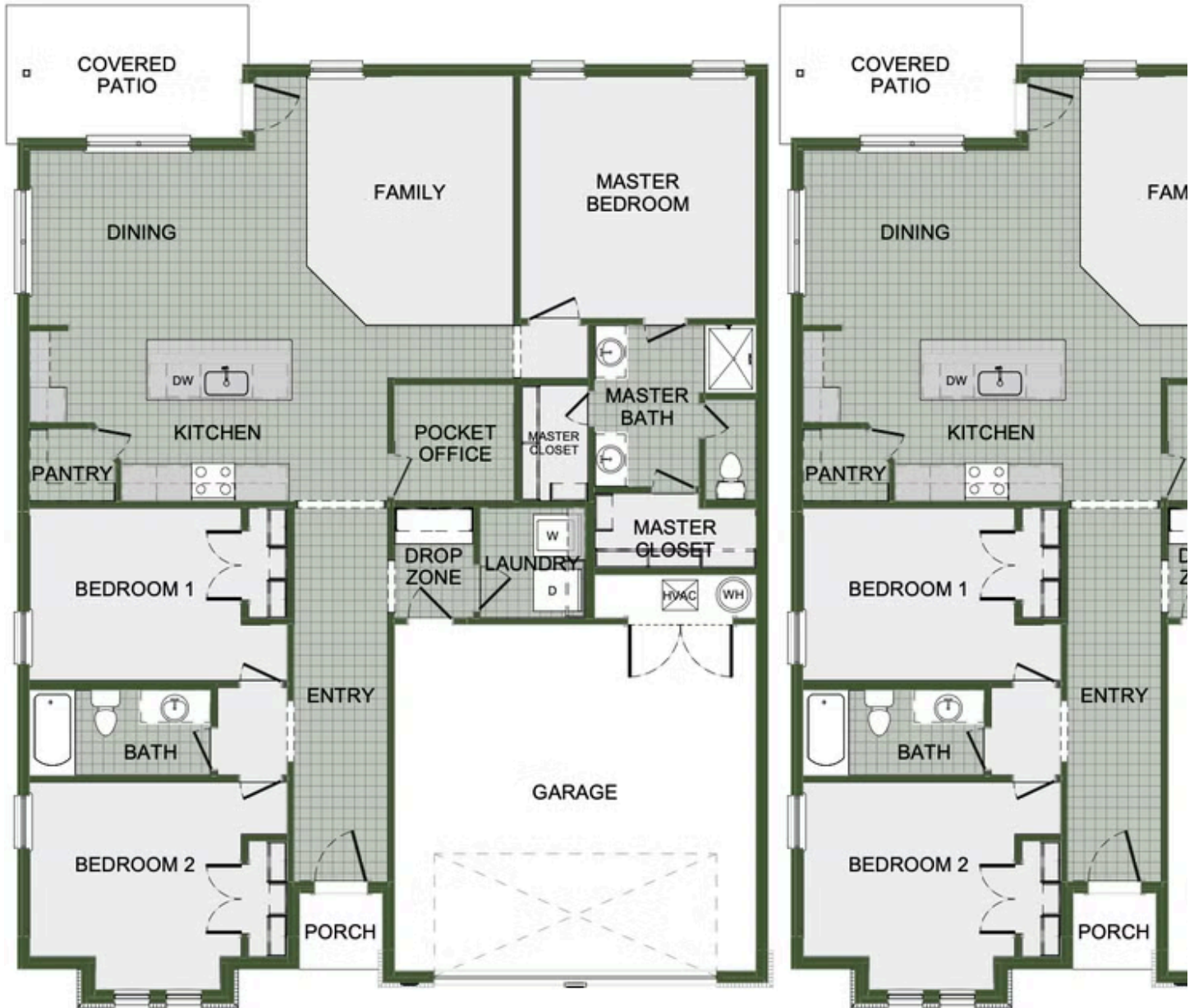
Floor Plan

STARTING AT **\$365,000**  3  2  2  1,726 FT<sup>2</sup>

This 3 bed, 2 bath 1714 square foot floor plan is customizable to your needs. Take your pick from a flexible living space, coffee bar, or pocket office in this 1,700-square-foot home. The ability to choose from structural options to best suit your lifestyle makes this house a home! With an open-concept living space and covered patio, this house is perfect for entertaining...



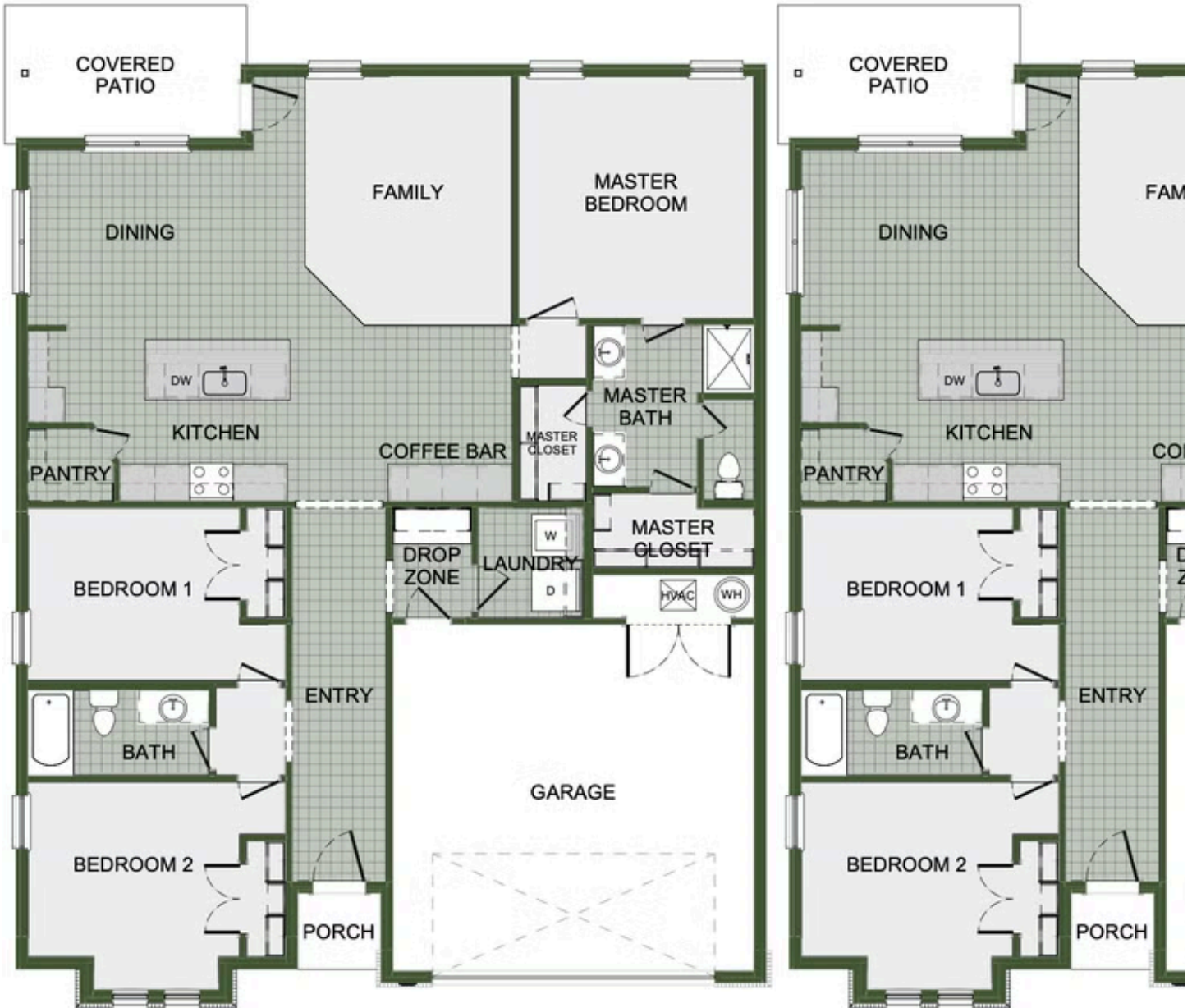




POCKET OFFICE OPTION



FLEX SPACE OPTION



COFFEE BAR OPTION