



TOWNE WEST

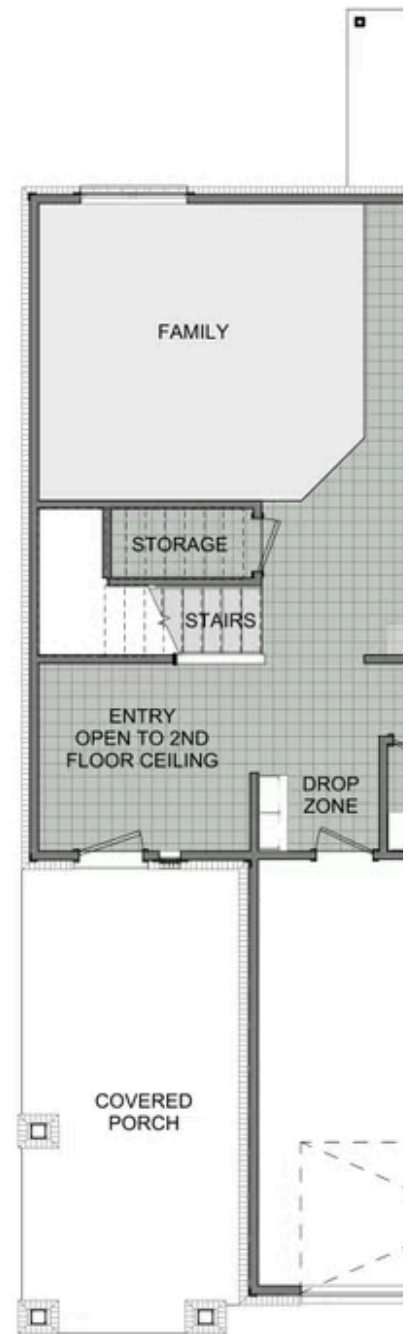
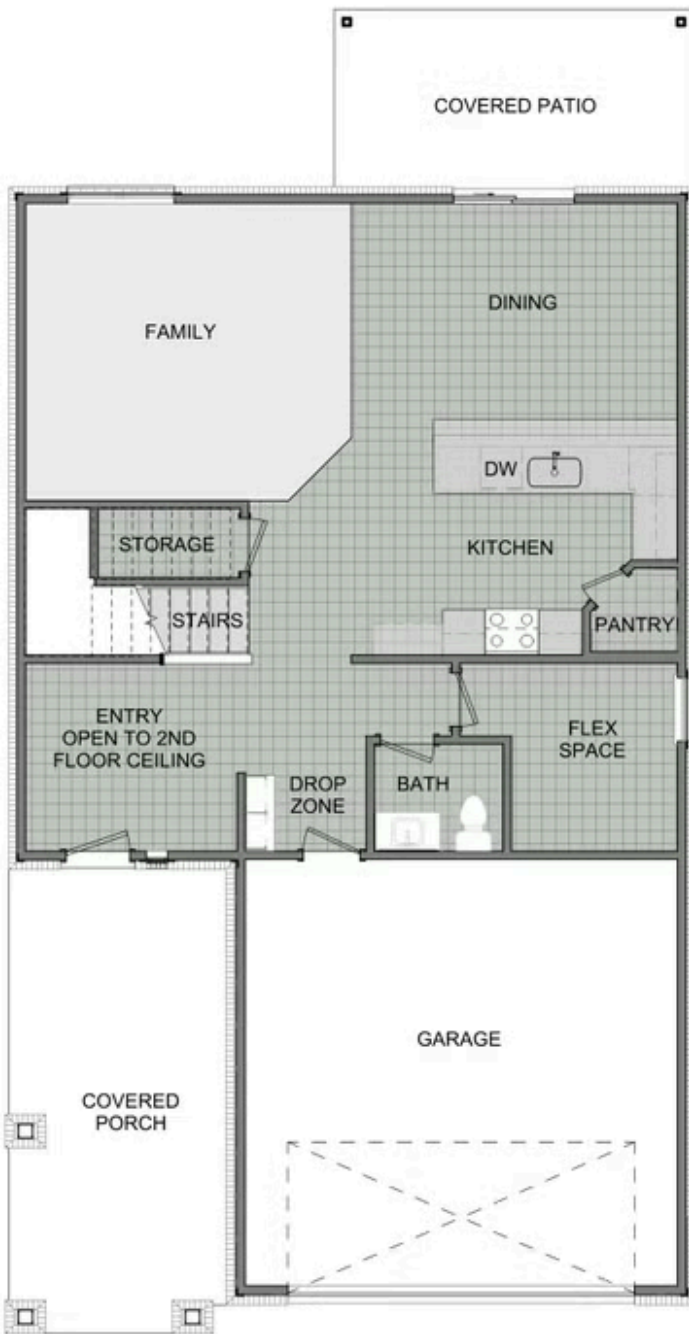
# 2360 Two Story

Floor Plan

STARTING AT **\$450,000**  4 - 5  2.5  2  2,360 FT<sup>2</sup>

This floor plan boasts 2360 square feet, 4-5 bedrooms, 2.5 bathrooms. This is one of the most versatile floor plans yet! With an option for a loft or a fifth bedroom, a flex space perfect for that home gym or office you've been needing, and an open concept downstairs, this home will fit any family. Check out the sky-high ceilings in the entry, the drop zone coming in from...







2ND FLOOR - LOFT OPTION



2ND FLOOR - 5 BED OPTION