



LEXINGTON

1450

Floor Plan

STARTING AT \$311,000  3  2  2  1,449 FT²

Our 1450 square feet, 3 bedroom, 2 bathroom floor plan features an expansive living room with a dedicated dining space. Homeowners are sure to enjoy the large pantry and single level bar in the kitchen that's perfect for entertaining or helping kids with homework in the evening. This floor plan has plenty of room in the primary suite and is complemented by a spacious walk...

AMENITIES

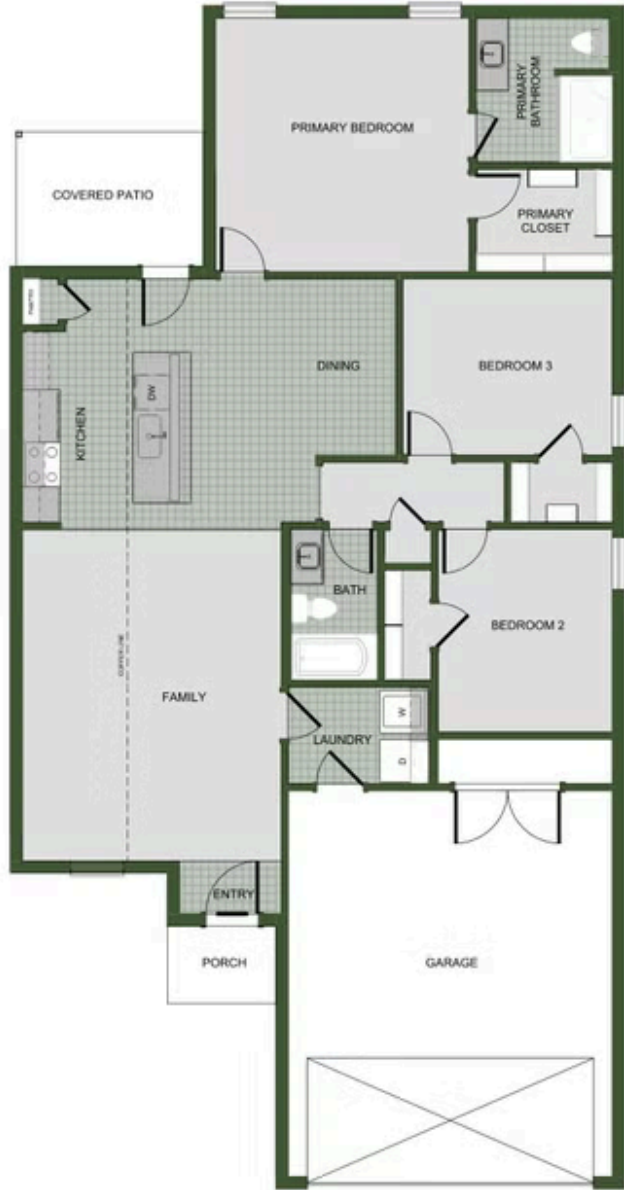


SIDEWALKS



RURAL
DEVELOPMENT
FINANCING







FLOOR PLAN

1450