



LEXINGTON

2360 Two Story

Floor Plan

STARTING AT **\$405,000**  4 - 5  2.5  2  2,360 FT²

This floor plan boasts 2360 square feet, 4-5 bedrooms, 2.5 bathrooms. This is one of the most versatile floor plans yet! With an option for a loft or a fifth bedroom, a flex space perfect for that home gym or office you've been needing, and an open concept downstairs, this home will fit any family. Check out the sky-high ceilings in the entry, the drop zone coming in from...

AMENITIES



SIDEWALKS

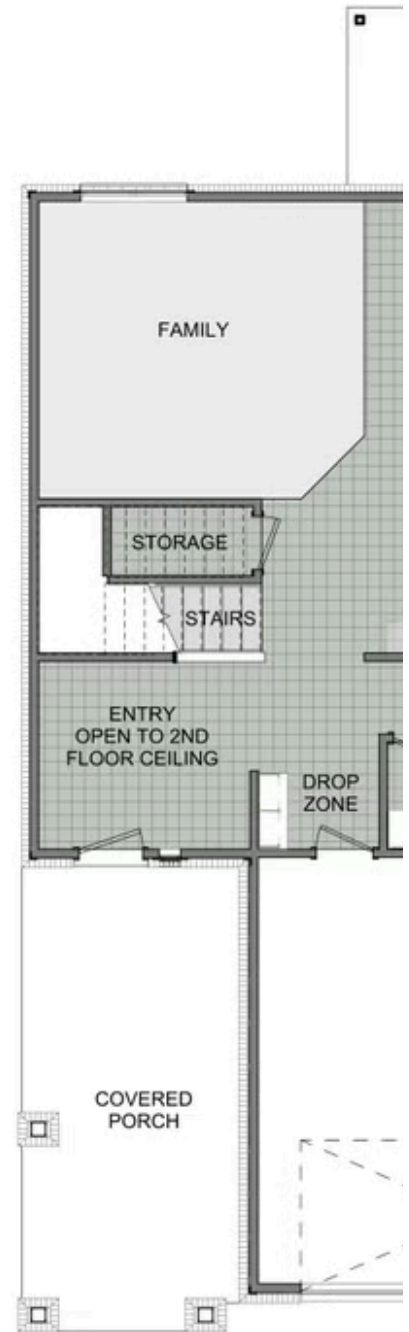
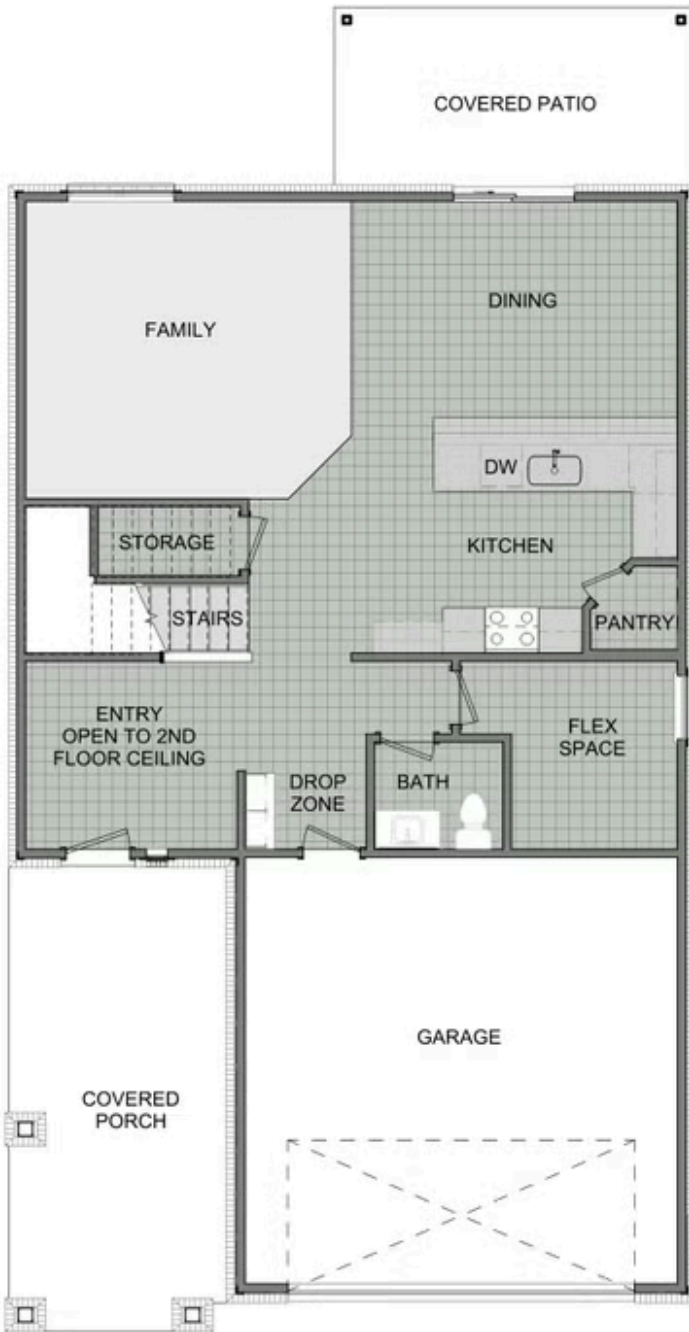


RURAL
DEVELOPMENT
FINANCING



2360 Two Story

Floor Plan





2ND FLOOR - LOFT OPTION



2ND FLOOR - 5 BED OPTION