



CASTLEWOOD

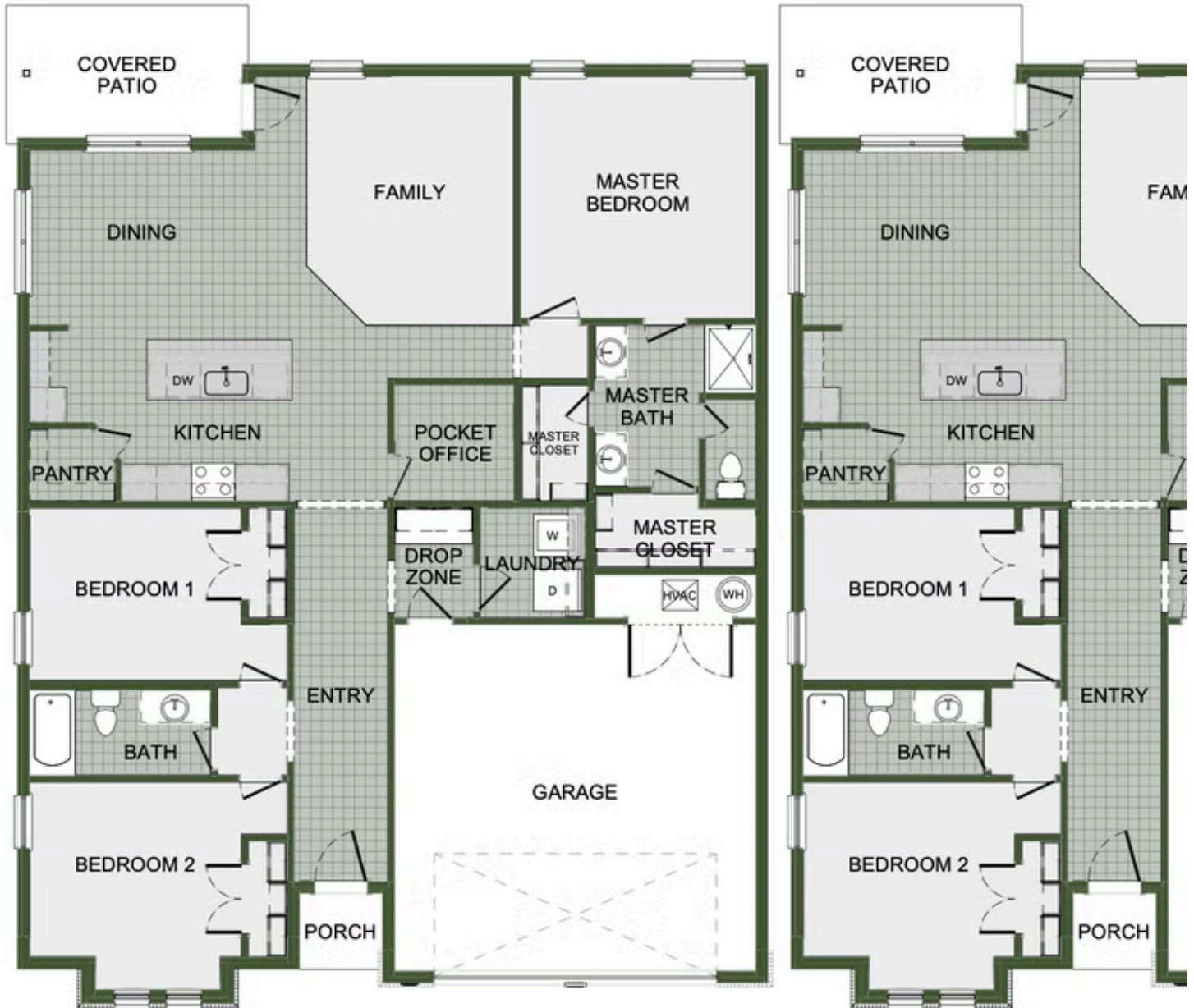
3503 N. Wiley Dr.

Siloam Springs, AR 72761

PRICED AT **\$309,903**  3  2.0  2  1726 FT<sup>2</sup>

This 3 bed, 2 bath 1714 square foot floor plan is customizable to your needs. Take your pick from a flexible living space, coffee bar, or pocket office in this 1,700-square-foot home. The ability to choose from structural options to best suit your lifestyle makes this house a home! With an open-concept living space and covered patio, this house is perfect for entertaining...





POCKET OFFICE OPTION