



CASTLEWOOD

3501 N. Wiley Dr.

Siloam Springs, AR 72761

PRICED AT **\$338,953**  3  2.0  3  1750 FT²

This

Monday - Saturday: 10 am-6pm

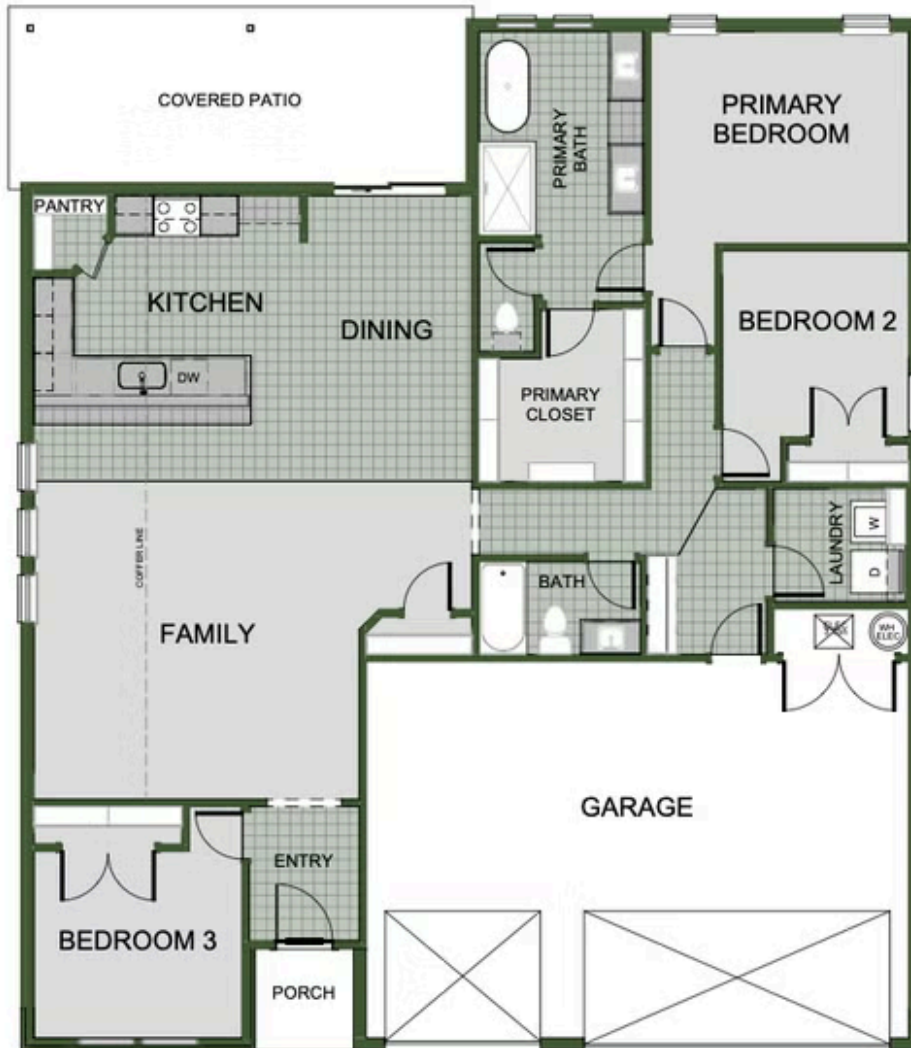
417-952-0369

schubermitchell.com

Materials, specifications, plans, designs, prices, premiums, options & sales programs may change without notice or obligation. All renderings, floor plans, and maps are artist's conception and may not depict actual buildings, fencing, walks, driveways, or landscaping.



**EQUAL HOUSING
OPPORTUNITY**



3 BEDROOM