



CASTLEWOOD

# 2000 Two Story

Floor Plan

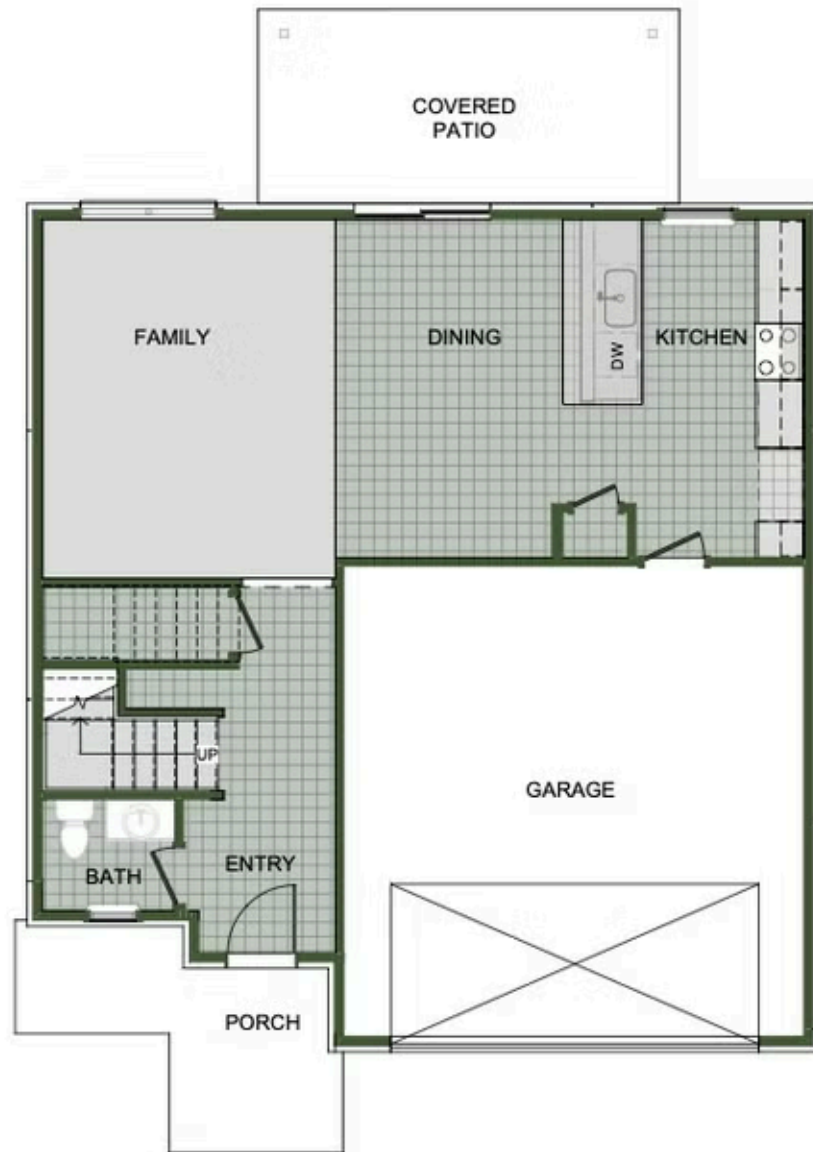
STARTING AT **\$348,000**  3 - 4  2.5 - 3  2  2,000 FT<sup>2</sup>

Introducing our 2000 Two Story this 3 - 4 bedroom, 2.5 to 3.5 bathroom with 1979 square foot home is the epitome of versatility for your family's needs! This floor plan offers an open-concept layout on the ground floor, with options for an upstairs loft, a fourth bedroom, or even a bedroom en-suite. Discover a home that adapts to your lifestyle with the 2000 Two Story – w...



# 2000 Two Story

Floor Plan



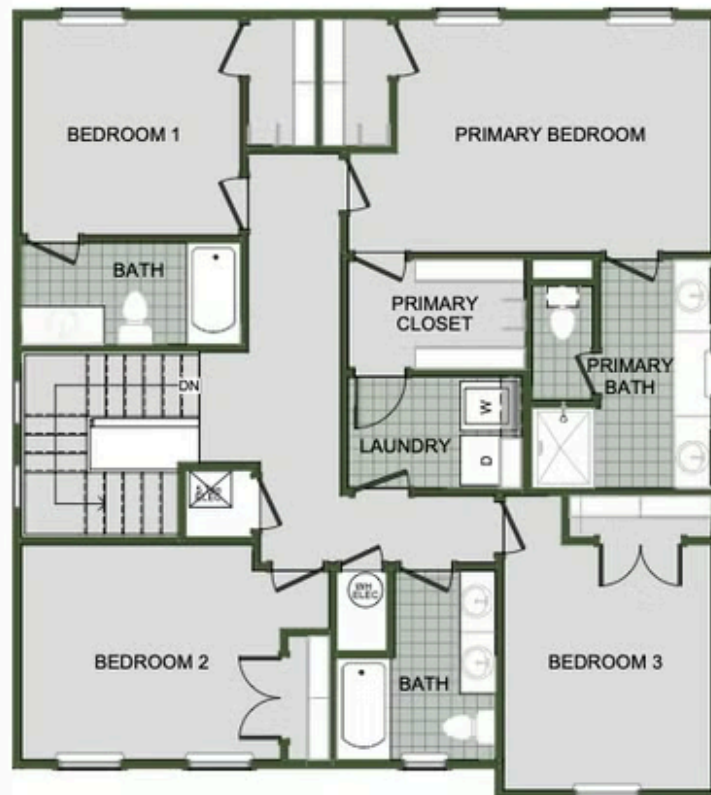
FIRST FLOOR



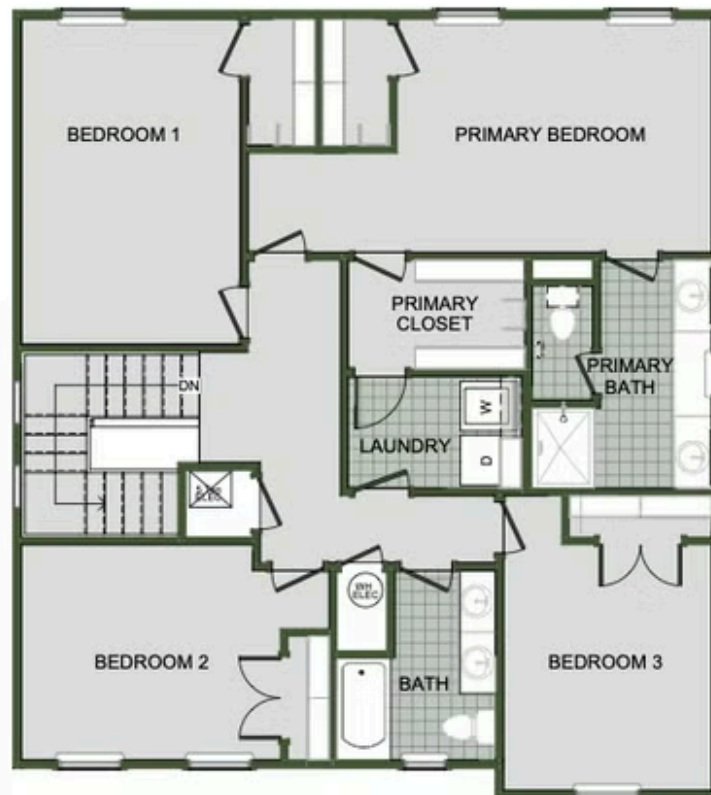
LOFT OPTION

# 2000 Two Story

Floor Plan



4 BEDROOM EN-SUITE OPTION



4 BEDROOM OPTION