



CASTLEWOOD

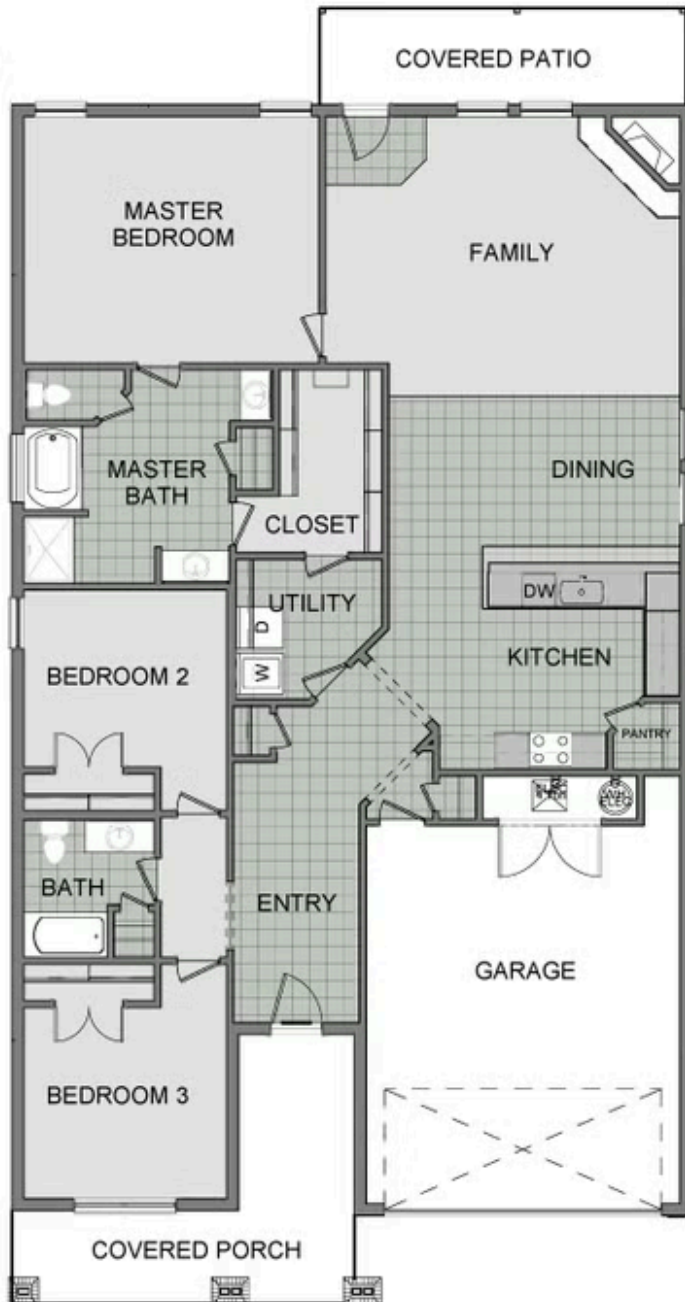
2050

Floor Plan

STARTING AT **\$333,000**  3  2  2  2,050 FT<sup>2</sup>

This 3-bedroom, 2-bathroom 2054 square feet home includes a corner pantry, room for bar seating, and a large, covered back patio, your family will feel right at home. This floor plan has double vanities in the primary bathroom. Also, it offers direct access from the utility room to the primary closet and 10-foot ceilings in the entry, kitchen, living area, and master bedr...





2050