



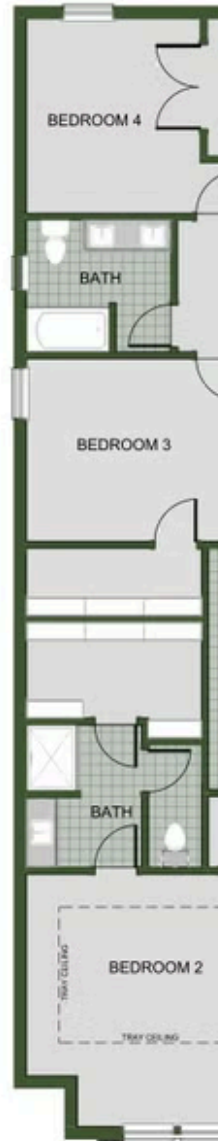
CASTLEWOOD

2575

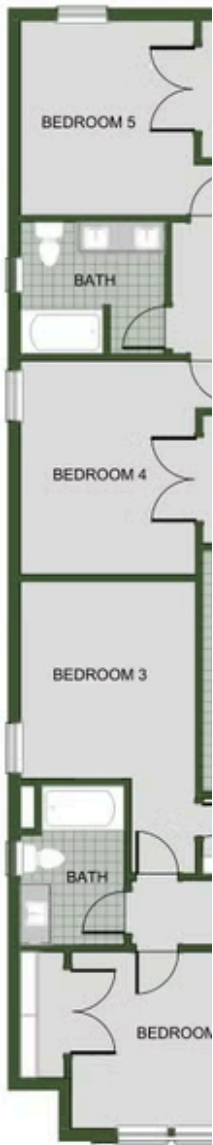
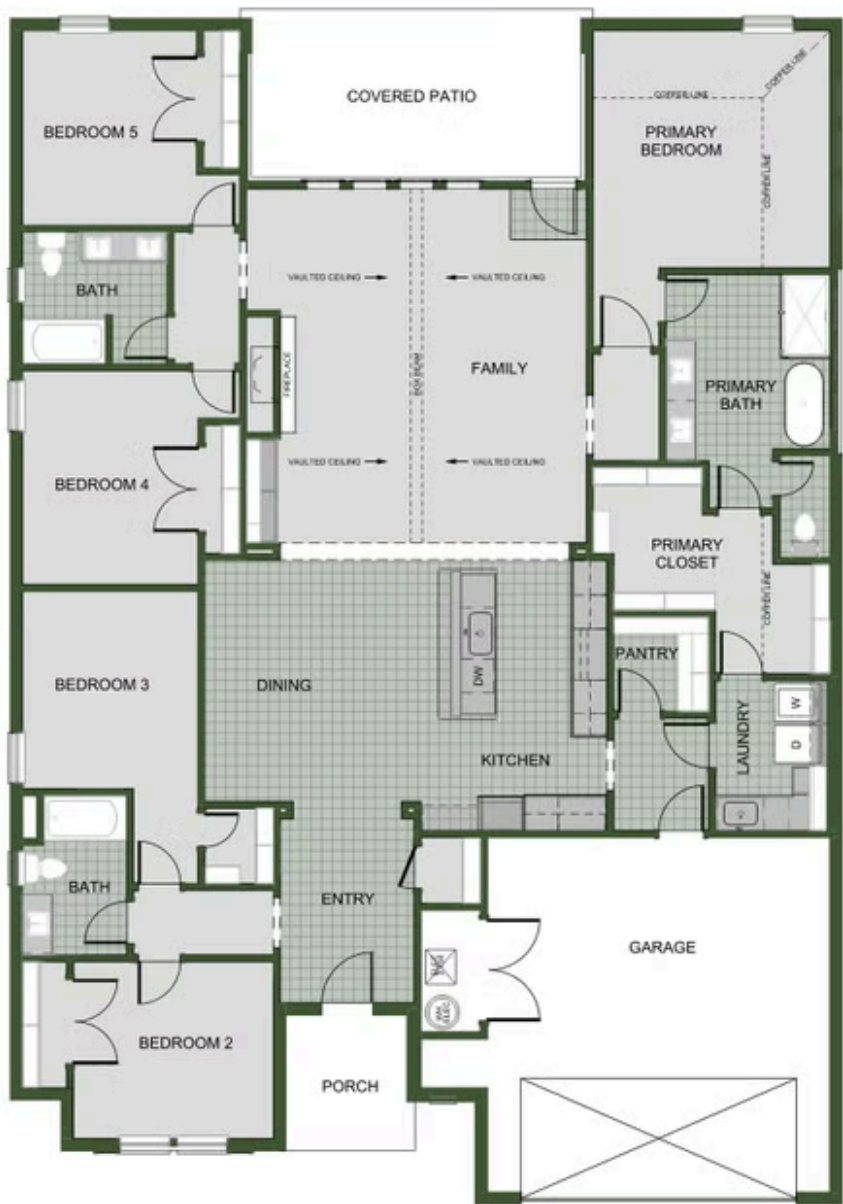
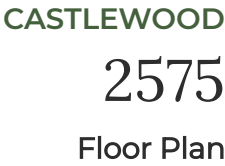
Floor Plan

STARTING AT **\$394,000**  5  3  2  2,572 FT²

The 2575 floorplan features a 4 to 5 bedroom, 3-bathroom with over 2,500 square feet of living space. This premium floorplan is designed to elevate your living experience with its exceptional features and thoughtful design. Step into a home with impressive 15' high vaulted ceilings, complemented by a stylish stained box beam, and 8' tall front and back doors that enhance ...



2ND MASTER SUITE



Materials, specifications, plans, designs, prices, premiums, options & sales programs may change without notice or obligation. All renderings, floor plans, and maps are artist's conception and may not depict actual buildings, fencing, walks, driveways, or landscaping.

