



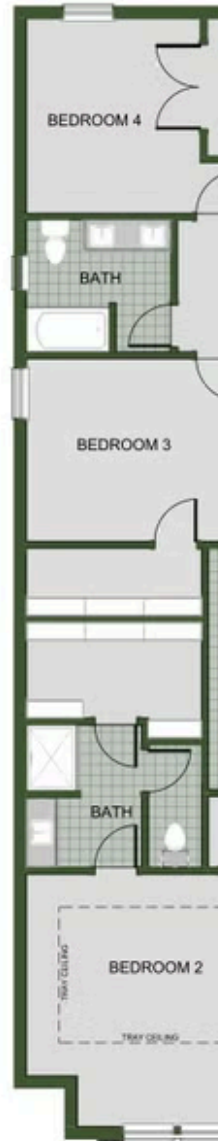
CASTLEWOOD

3601 N. Wiley Dr.

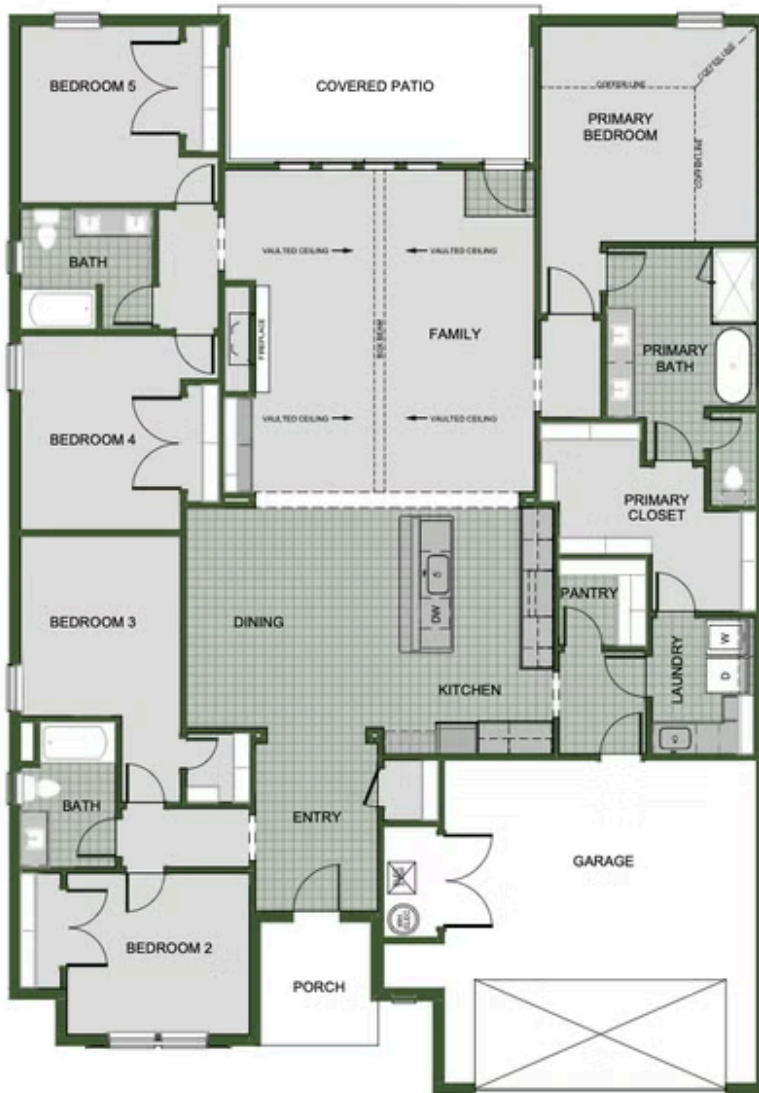
Siloam Springs, AR 72761

PRICED AT **\$412,651**  5  3.0  2  2572 FT²

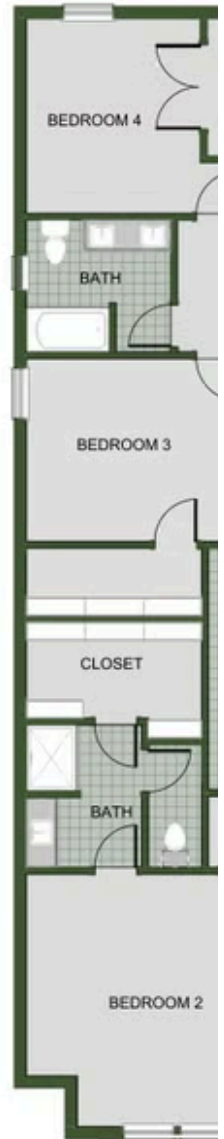
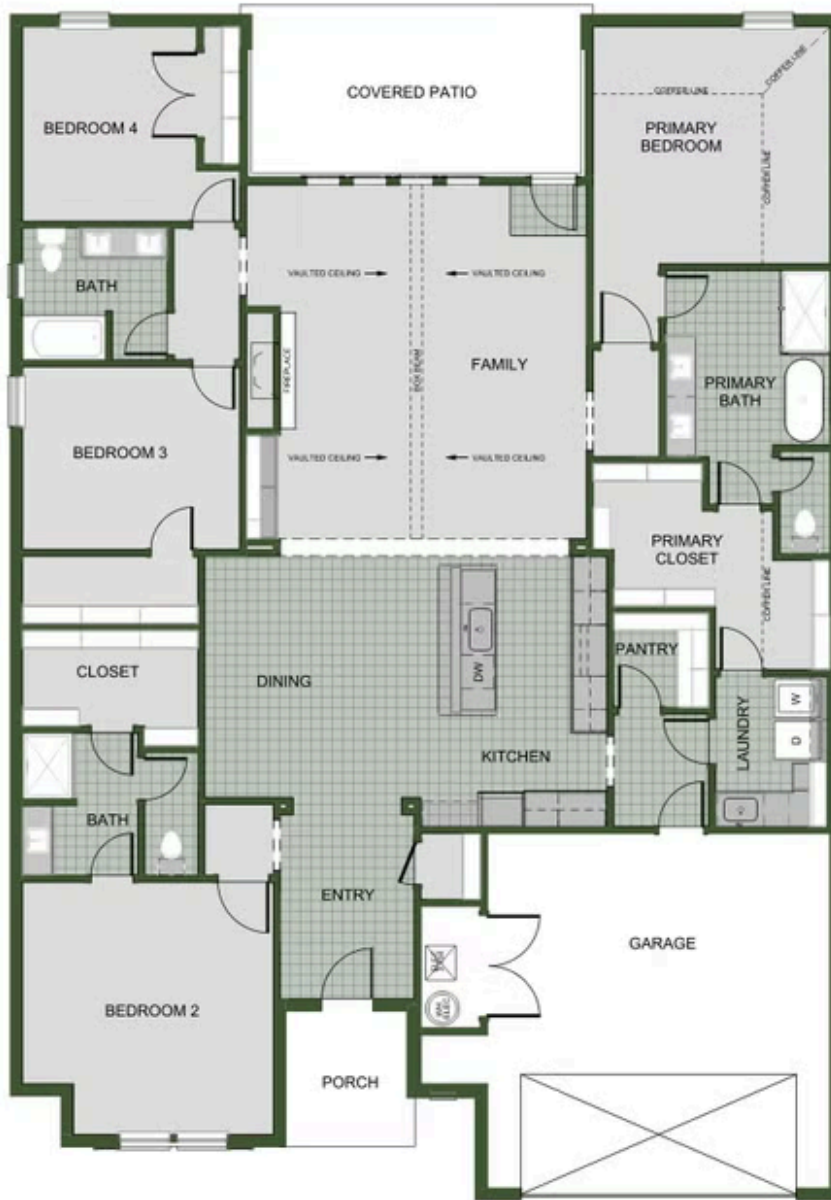
The 2575 floorplan features a 4 to 5 bedroom, 3-bathroom with over 2,500 square feet of living space. This premium floorplan is designed to elevate your living experience with its exceptional features and thoughtful design. Step into a home with impressive 15' high vaulted ceilings, complemented by a stylish stained box beam, and 8' tall front and back doors that enhance ...

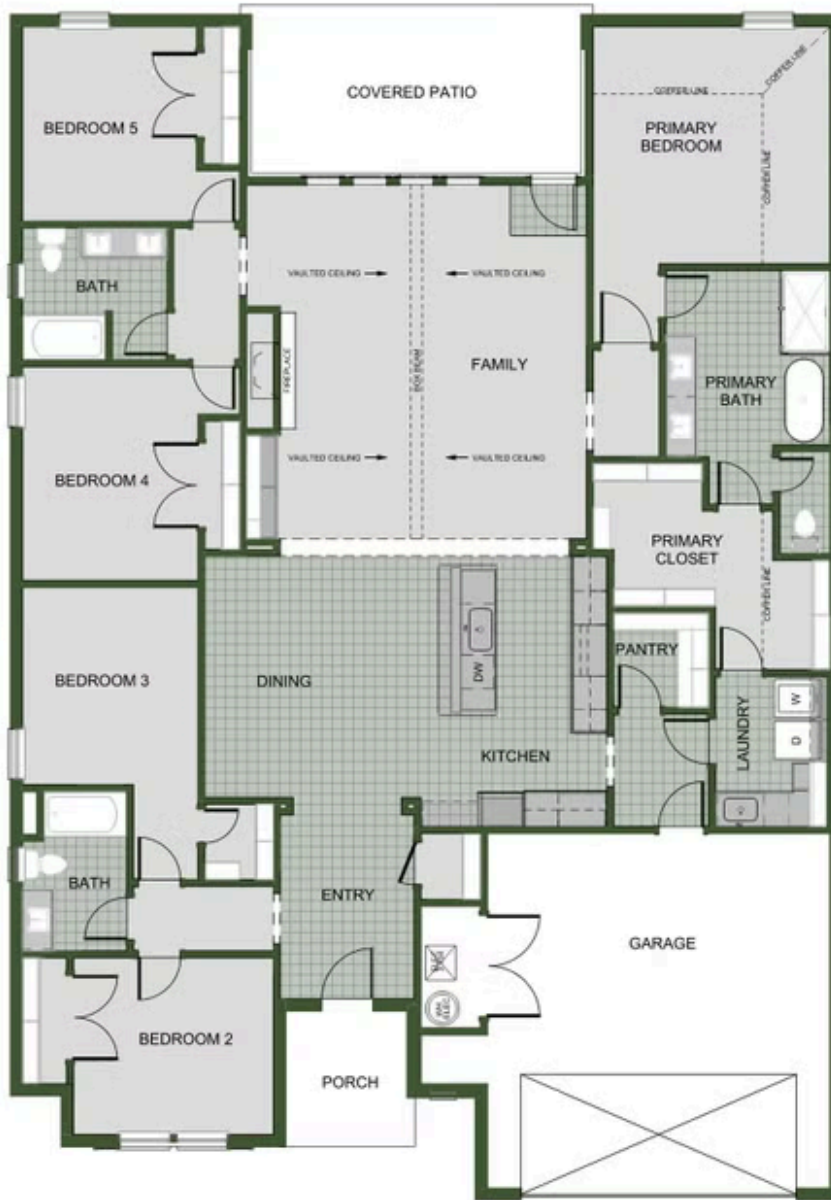


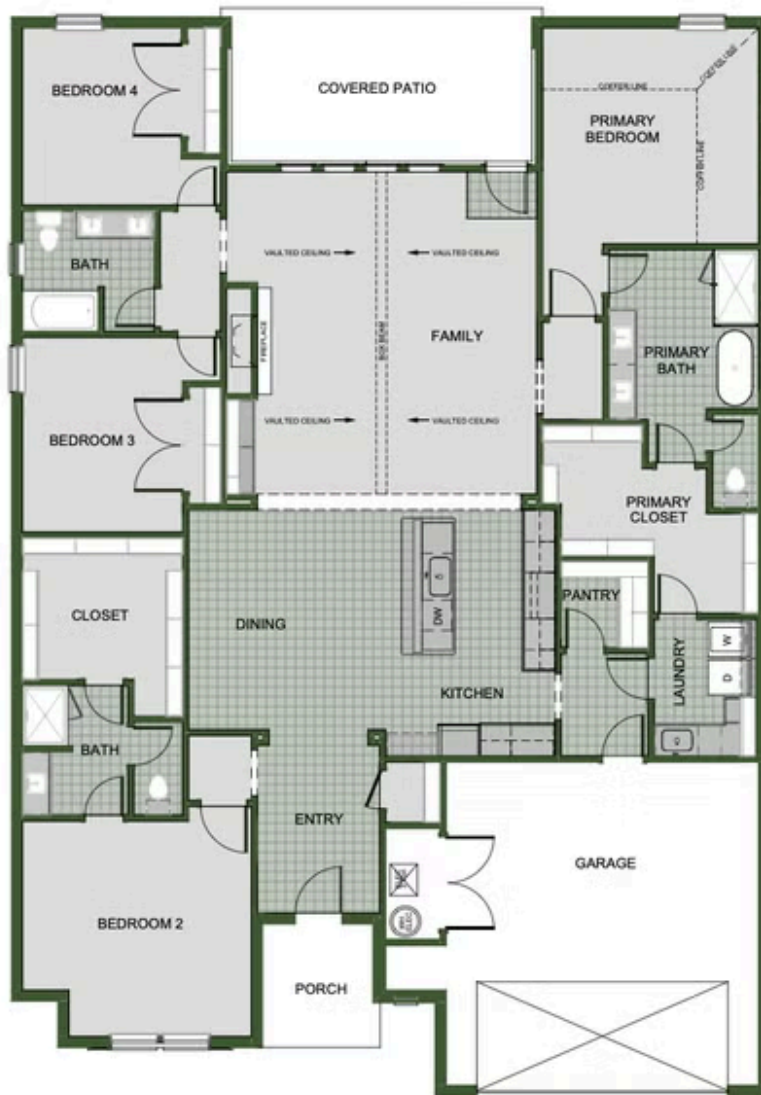
2ND MASTER SUITE



5TH BEDROOM







2ND MASTER SUITE