



DEERE CREEK

5092 Moose Hollow Ter.

Springdale, AR 72762

PRICED AT \$378,950  3  2.0  2  1726 FT²

This 3 bed, 2 bath 1714 square foot floor plan is customizable to your needs. Take your pick from a flexible living space, coffee bar, or pocket office in this 1,700-square-foot home. The ability to choose from structural options to best suit your lifestyle makes this house a home! With an open-concept living space and covered patio, this house is perfect for entertaining...

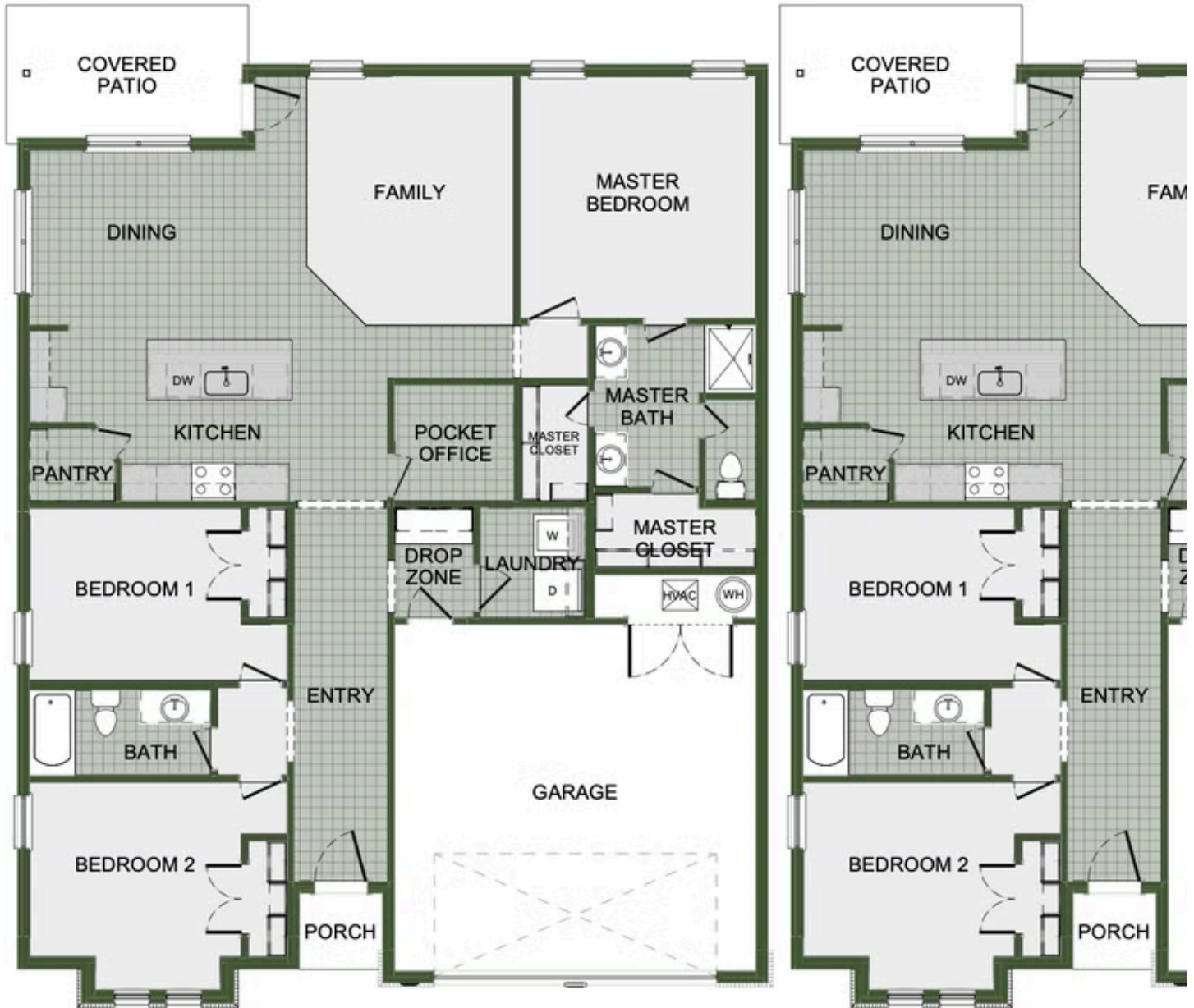
AMENITIES



SIDEWALKS



GREENSPACE



POCKET OFFICE OPTION