



RAINER FARMS

1750-4 3-Car

Floor Plan

STARTING AT \$273,000  4  2  3  1,750 FT²

This floor plan is a 3-4 bedroom, 2-bathroom 1750 square feet home featuring 10-foot ceilings in the entryway, kitchen, and living area, plus dual vanities in the primary bathroom. The 1750 3-Car Series delivers the luxury of a larger floor plan with an included 3rd car garage. Enjoy the flexible floor plan with the choice of 3 or 4 bedrooms to find the best fit for your ...

AMENITIES



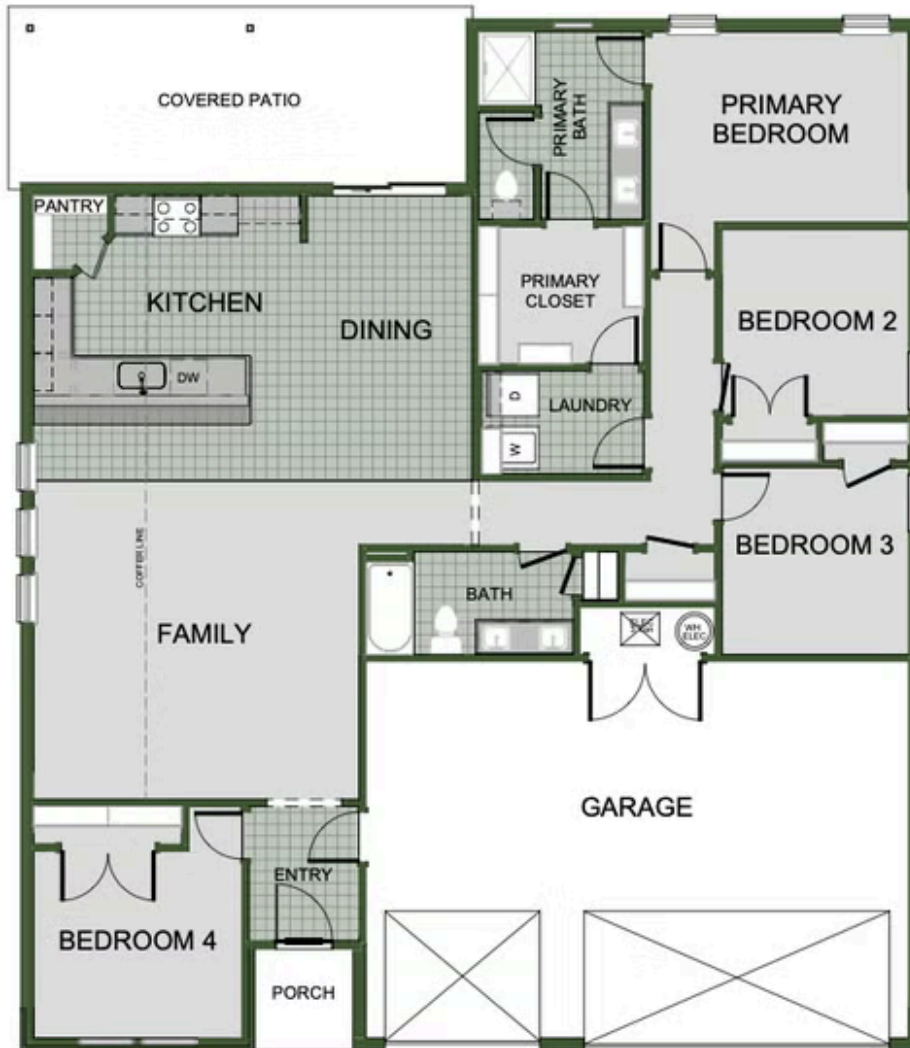
SIDEWALKS



WALKING
TRAIL



GOLF CART
COMMUNITY



4TH BEDROOM