



RAINER FARMS

904 Aberdeen Ave.

Carl Junction, MO 64834

PRICED AT \$382,332  4  3.0  2  2410 FT²

The 2410 series is a 4 bed, 3 bath, 2410 square feet home with a large family, dining, and kitchen area with a bar-style counter ideal for hosting guests. An open design layout creates a welcoming space for family time. The large primary suite offers a spacious walk-in closet, double bathroom vanities, and a separate tub and shower.

AMENITIES



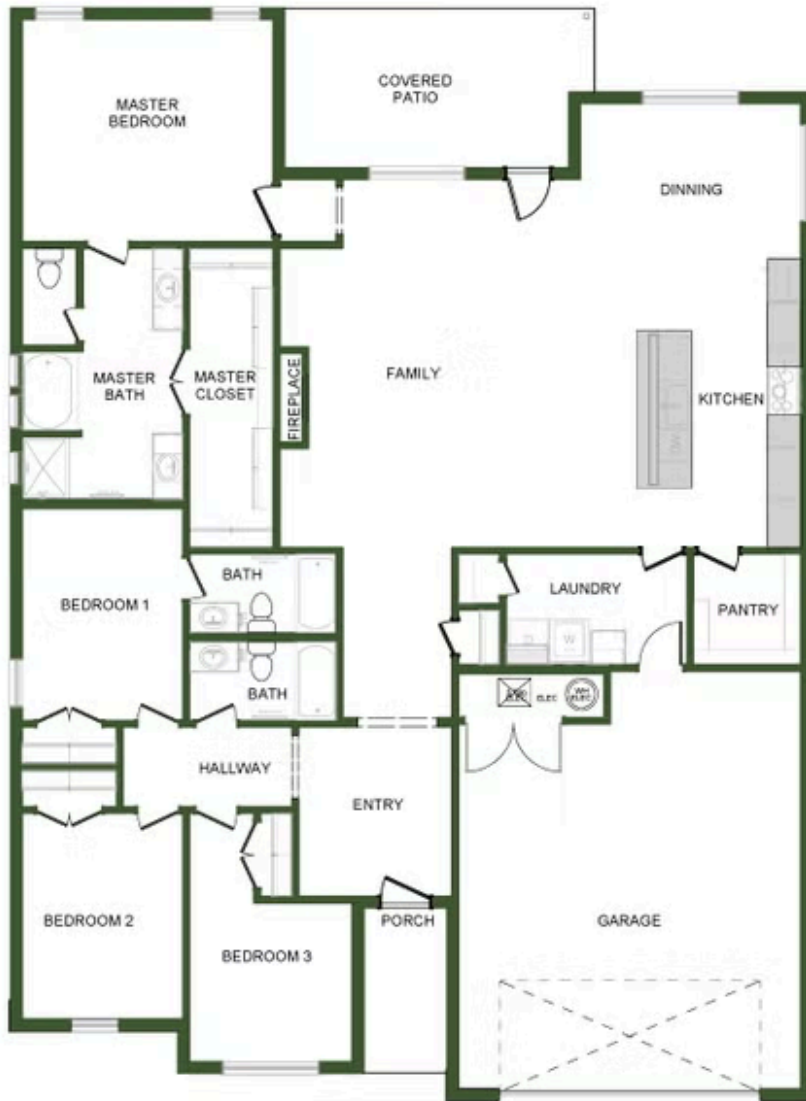
SIDEWALKS



WALKING
TRAIL



GOLF CART
COMMUNITY



2410