



SOUTHWIND TRAIL

218 Eagle Edge Ave.

Duenweg, MO 64841

PRICED AT \$212,110  3  2.0  2  1180 FT<sup>2</sup>

This Cottage Collection plan offers a beautiful wide-open kitchen and living space. Gather around the spacious kitchen island with friends and family. Enjoy the privacy of a secluded primary suite and a sizable walk-in closet. This 3 bedroom, 2 bathroom plan is the definition of affordable luxury, with a modern design that suits a busy and active lifestyle.

#### AMENITIES



SIDEWALKS



COMMUNITY  
POND



RURAL  
DEVELOPMENT  
FINANCING



GREENSPACE

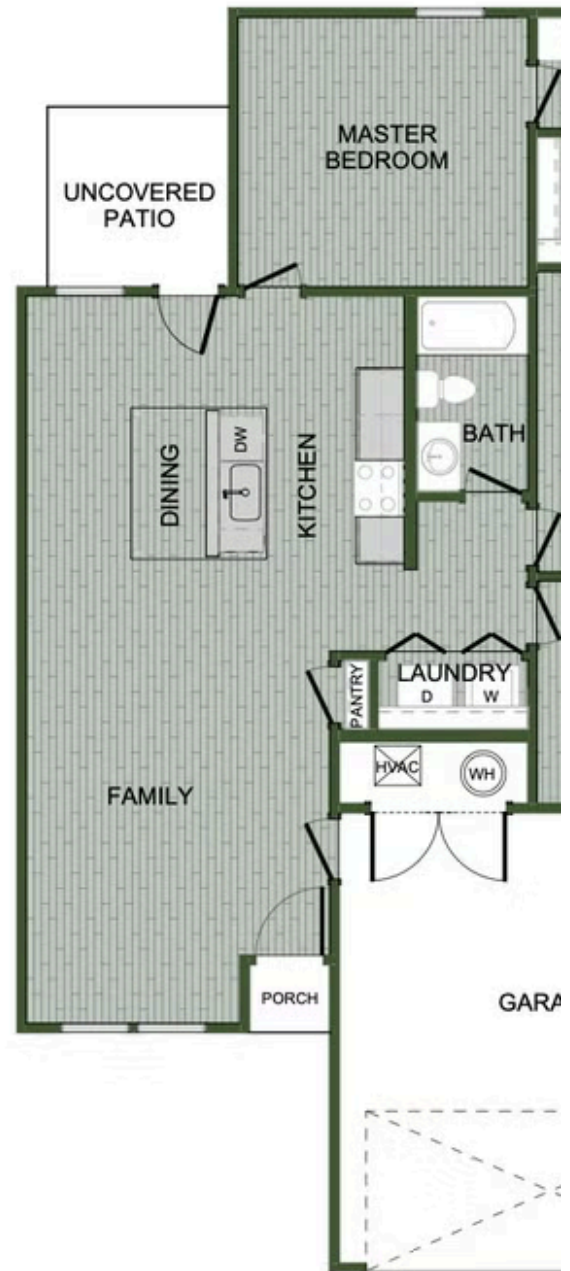
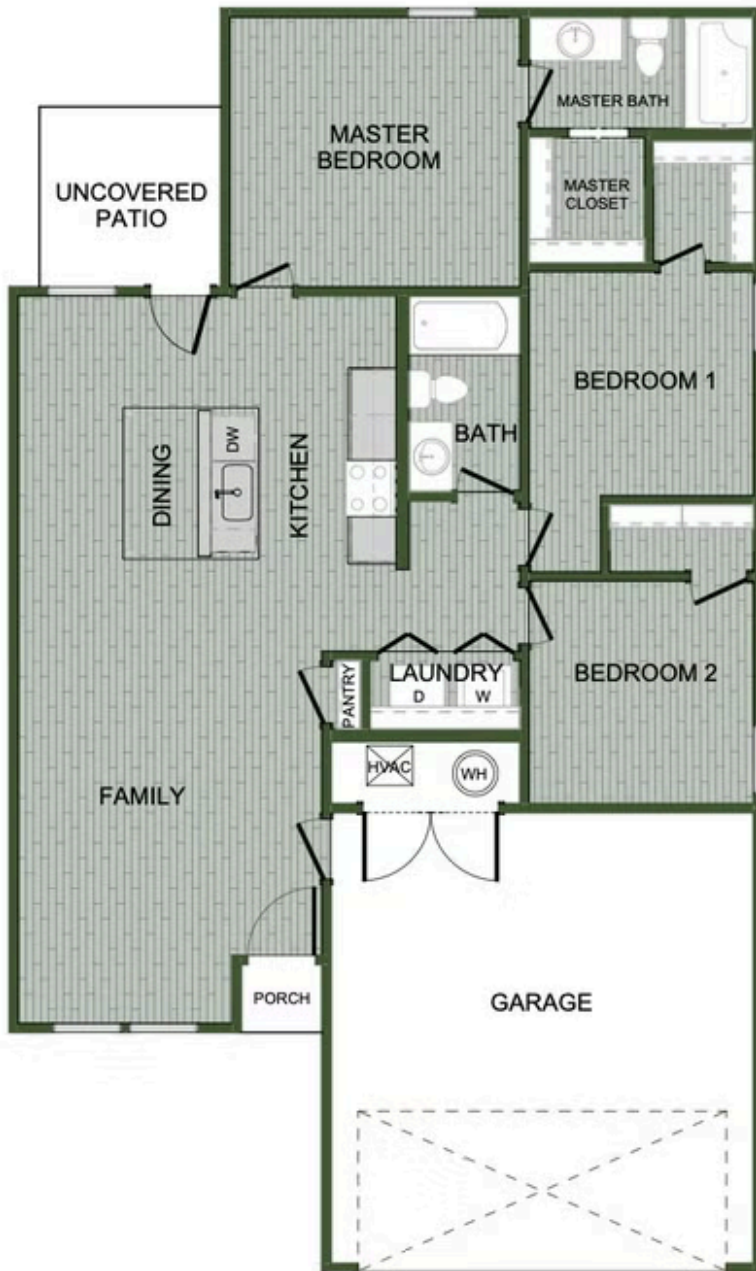


WALKING  
TRAIL



PARK





1100 COTTAGE