



STARTING AT **\$215,000** 🛏 3 🚿 2 🚗 2 📏 1,200 FT<sup>2</sup>

This hybrid plan offers the luxury of a brick exterior, with the affordability of cottage finishes inside. Gather around the spacious kitchen island with friends and family. Enjoy the privacy of a secluded primary suite and a sizable walk-in closet. This 3 bedroom, 2 bathroom plan is the definition of affordable luxury, with a modern design that suits a busy and acti...

#### AMENITIES



SIDEWALKS



COMMUNITY  
POND



RURAL  
DEVELOPMENT FINANCING



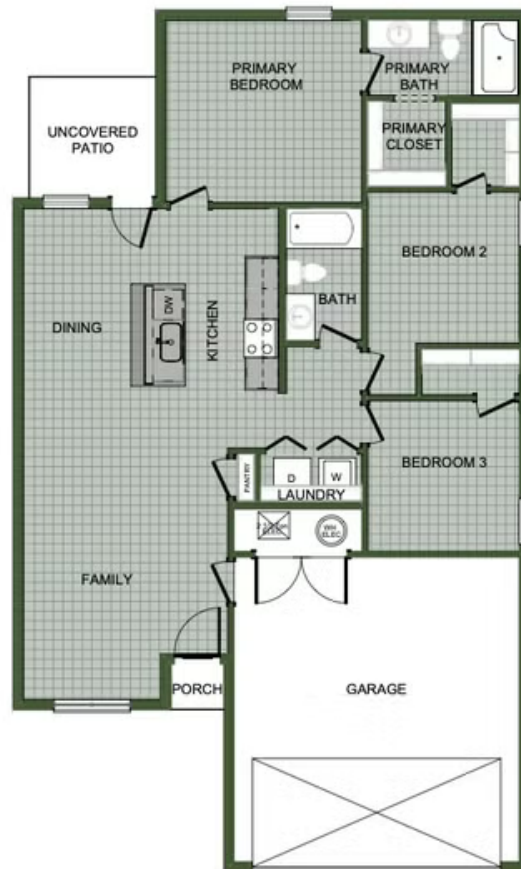
GREENSPACE



WALKING  
TRAIL



PARK



1200H