



STARTING AT **\$220,000** 🛏 4 🚿 2 🚗 2 📏 1,392 FT<sup>2</sup>

The 1400 Cottage offers a beautiful wide-open kitchen and living space. Gather around the spacious kitchen peninsula island with friends and family. Enjoy the privacy of a secluded primary suite and a sizable walk-in closet and double vanity. This 4 bedroom, 2 bathroom plan is the definition of affordable luxury.

#### AMENITIES



SIDEWALKS



COMMUNITY  
POND



RURAL  
DEVELOPMENT FINANCING



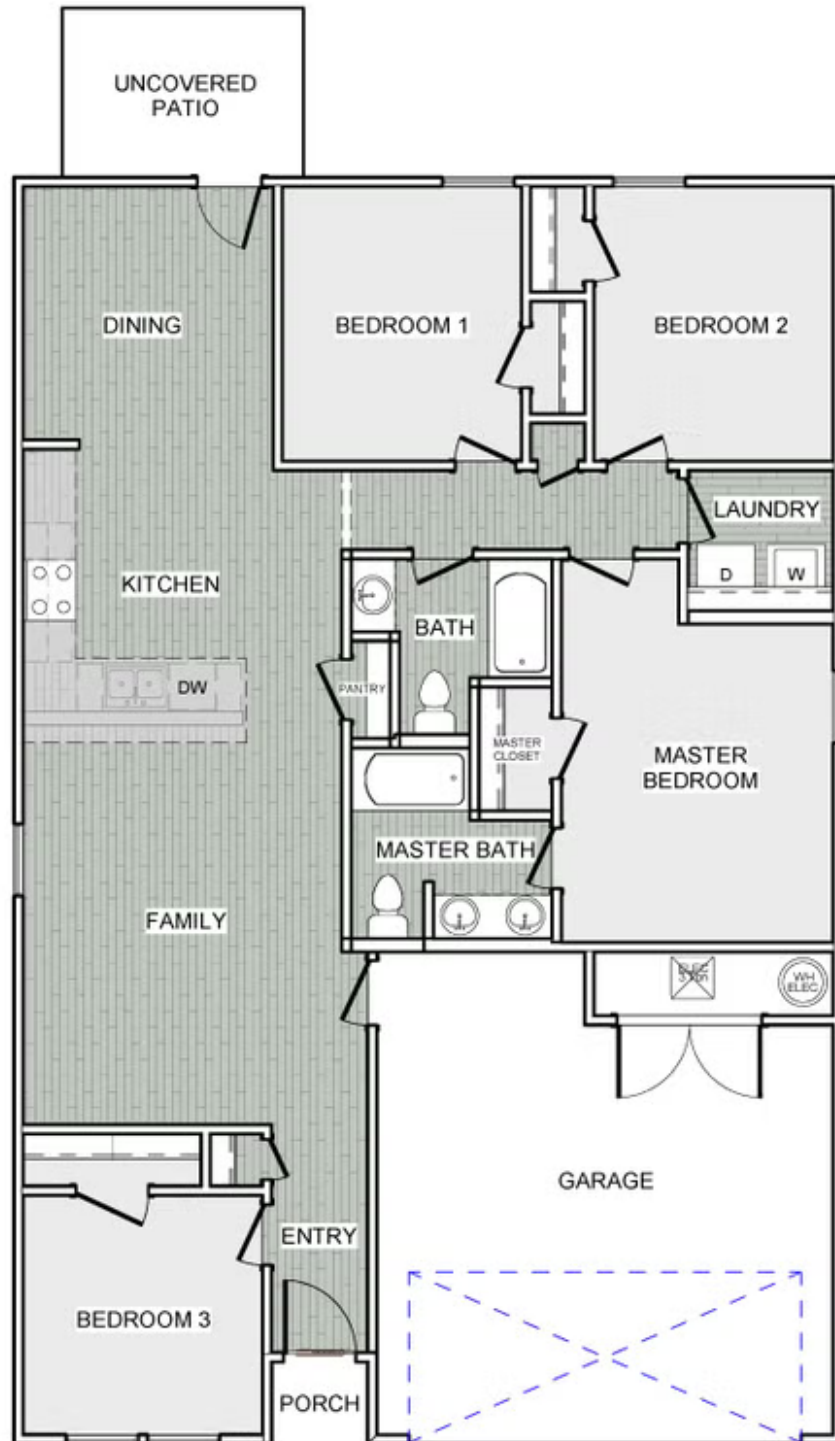
GREENSPACE



WALKING  
TRAIL



PARK



1400 COTTAGE