



SOUTHWIND TRAIL

1505KP-4 Cottage

Floor Plan

STARTING AT **\$239,000**  4  2  2  1,506 FT²

This 4 bedroom, 2 bathroom, 1505 square feet home is gorgeous and ready to be filled with your family and friends! Natural light streams into the living and kitchen area so you can enjoy a spacious and airy family area with a dedicated dining space. LVP flooring throughout upgrades your home with durability and style. Available space is truly maximized in this home with a...

AMENITIES



SIDEWALKS



COMMUNITY
POND



RURAL
DEVELOPMENT
FINANCING



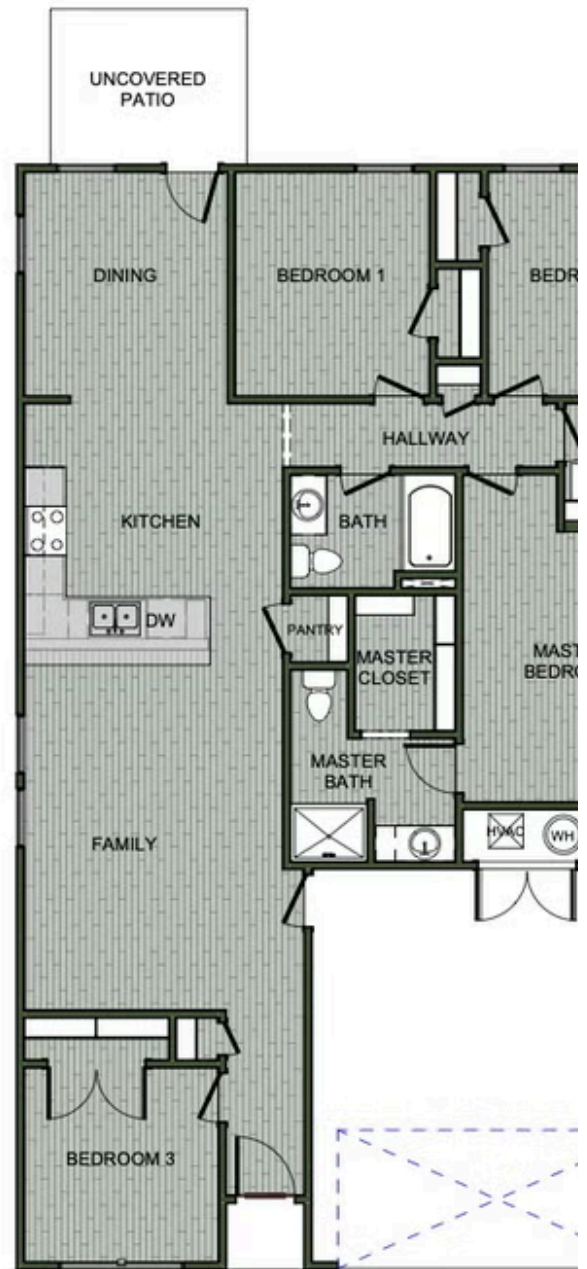
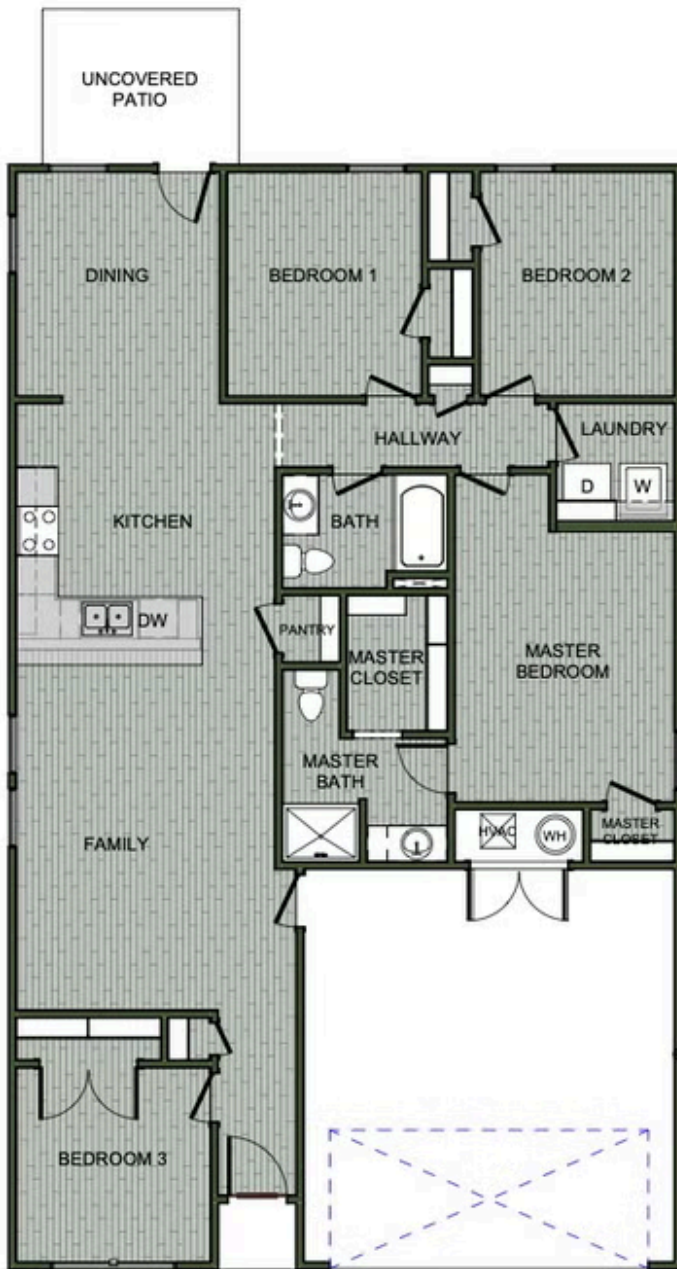
GREENSPACE



WALKING
TRAIL



PARK



1505 KP-4