



SOUTHWIND TRAIL

316 Molly Dean Dr.

Duenweg, MO 64841

PRICED AT \$244,738  3  2.0  2  1550 FT²

Our 1550 square feet, 3 bedroom, 2 bathroom floor plan series features an open living area with dedicated dining space and a single-level kitchen island. The linen closet, large pantry, and oversized closets ensure that you will have all of the storage space your heart desires. Enjoy a secluded primary bedroom with plenty of space and a large walk-in closet.

AMENITIES



SIDEWALKS



COMMUNITY
POND



RURAL
DEVELOPMENT FINANCING



GREENSPACE



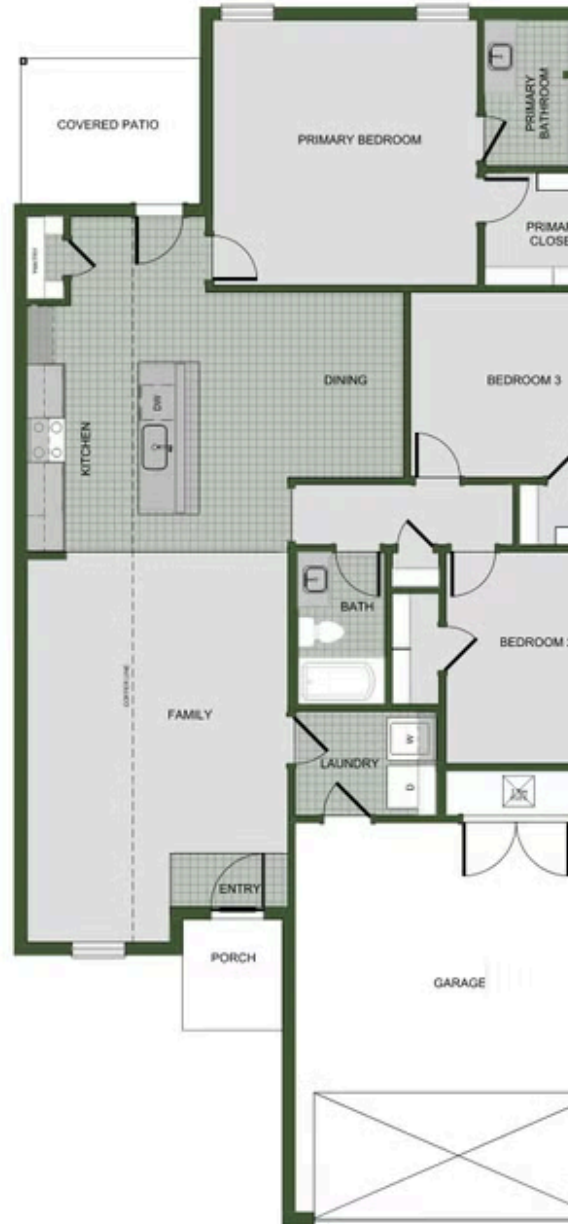
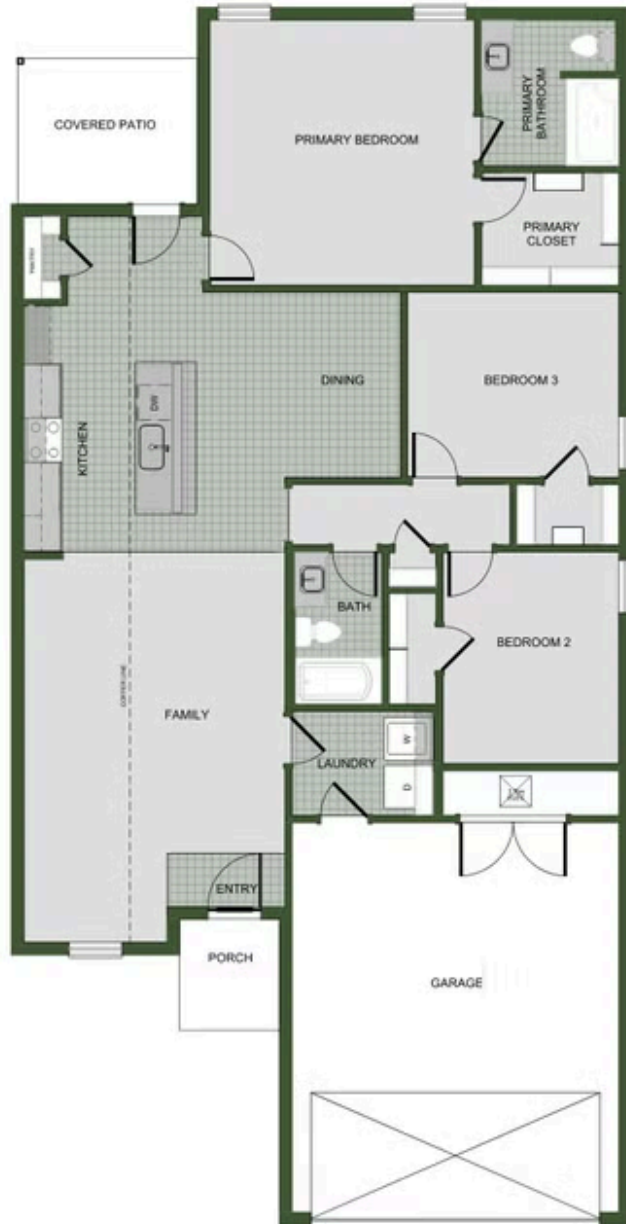
WALKING
TRAIL



PARK



SOUTHWIND TRAIL
316 Molly Dean Dr.
Duenweg, MO 64841



Monday - Saturday: 10 am-6pm
417-952-0369
schubermitchell.com

Materials, specifications, plans, designs, prices, premiums, options & sales programs may change without notice or obligation. All renderings, floor plans, and maps are artist's conception and may not depict actual buildings, fencing, walks, driveways, or landscaping.





1550