



SOUTHWIND TRAIL

406 Molly Dean Dr.

Duenweg, MO 64841

PRICED AT \$274,548  3  2.0  2  1726 FT²

This 3 bed, 2 bath 1714 square foot floor plan is customizable to your needs. Take your pick from a flexible living space, coffee bar, or pocket office in this 1,700-square-foot home. The ability to choose from structural options to best suit your lifestyle makes this house a home! With an open-concept living space and covered patio, this house is perfect for entertaining...

AMENITIES



SIDEWALKS



COMMUNITY
POND



RURAL
DEVELOPMENT FINANCING



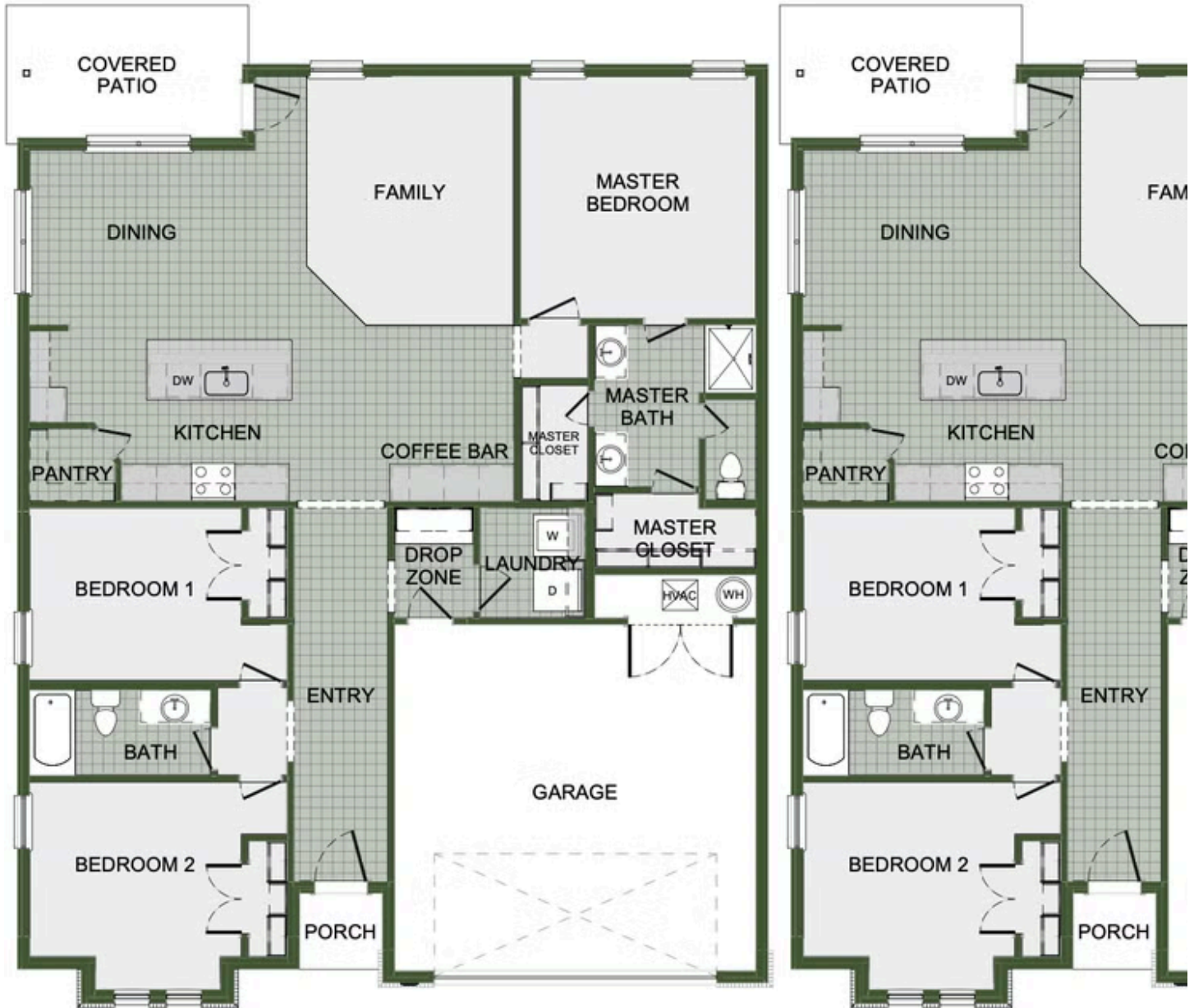
GREENSPACE



WALKING
TRAIL



PARK



COFFEE BAR OPTION