



SOUTHWIND TRAIL

215 Molly Dean Drive

Duenweg, MO 64841



PRICED AT \$269,195 🛏 4 🚿 2.0 🚗 2 📏 1729 FT<sup>2</sup>

This gorgeous 4 bedroom home is ready to be filled with your family and friends! Connect with nature in this floor plan thanks to the cozy covered back patio just off the open concept family, dining, and kitchen area. Available space is truly maximized in this home with a kitchen pantry and dedicated laundry space, just off the oversized primary suite closet.

#### AMENITIES



SIDEWALKS



COMMUNITY  
POND



RURAL  
DEVELOPMENT FINANCING



GREENSPACE



WALKING  
TRAIL

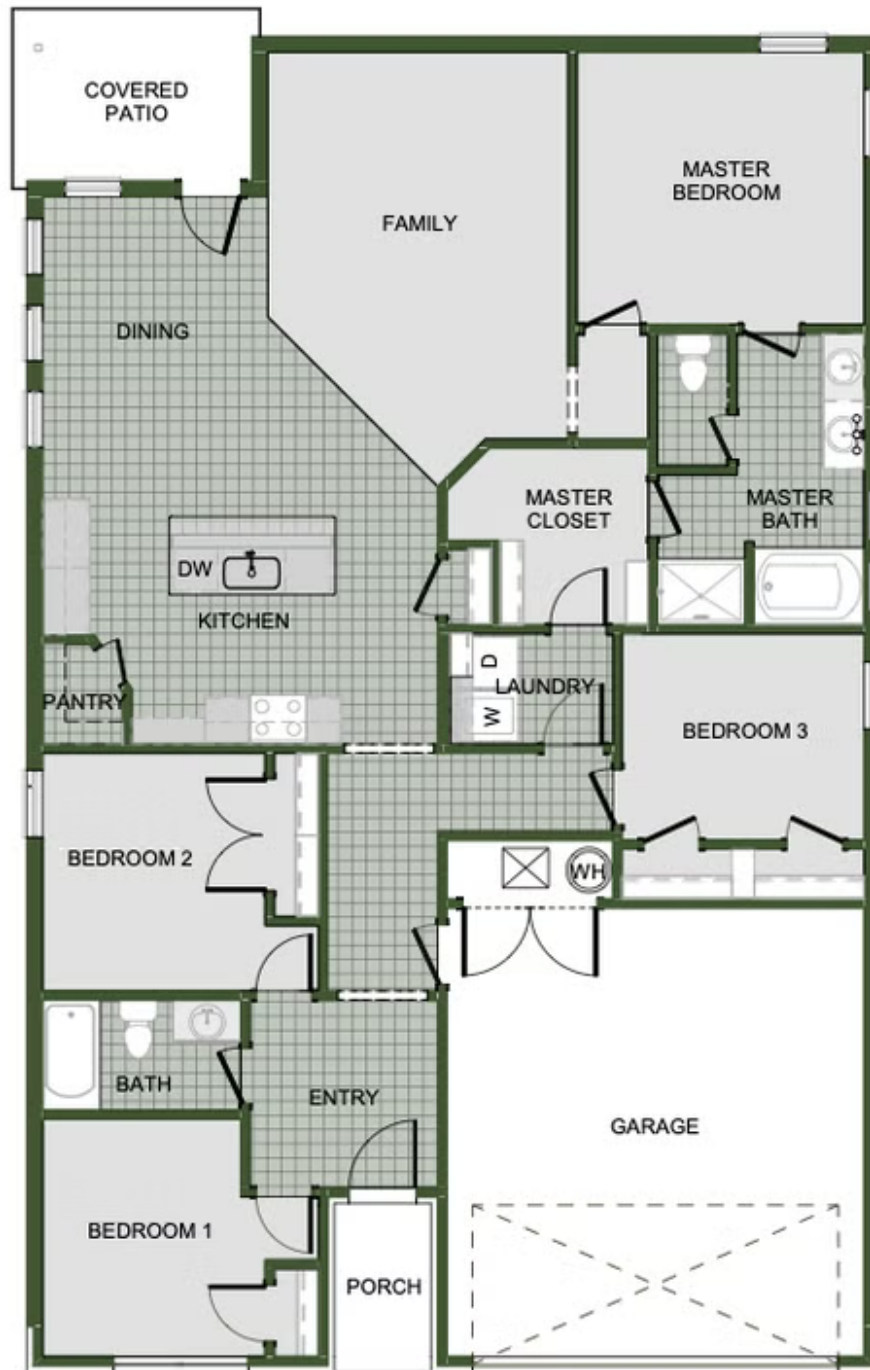


PARK

Monday - Saturday: 10 am-6pm  
417-952-0369  
schubermitchell.com

Materials, specifications, plans, designs, prices, premiums, options & sales programs may change without notice or obligation. All renderings, floor plans, and maps are artist's conception and may not depict actual buildings, fencing, walks, driveways, or landscaping.





1729-4