



SOUTHWIND TRAIL

404 Molly Dean Dr.

Duenweg, MO 64841

PRICED AT \$289,113  4  2.0  2  1950 FT²

This 1950 square foot 4 bedroom, 2 bathroom home features a spacious and open floor plan. The main living area includes a large living room that flows seamlessly into a modern kitchen and dining area, creating the perfect space for entertaining guests. The home includes four bedrooms and two full bathrooms. With its thoughtful design and practical amenities, this home is ...

AMENITIES



SIDEWALKS



COMMUNITY
POND



RURAL
DEVELOPMENT
FINANCING



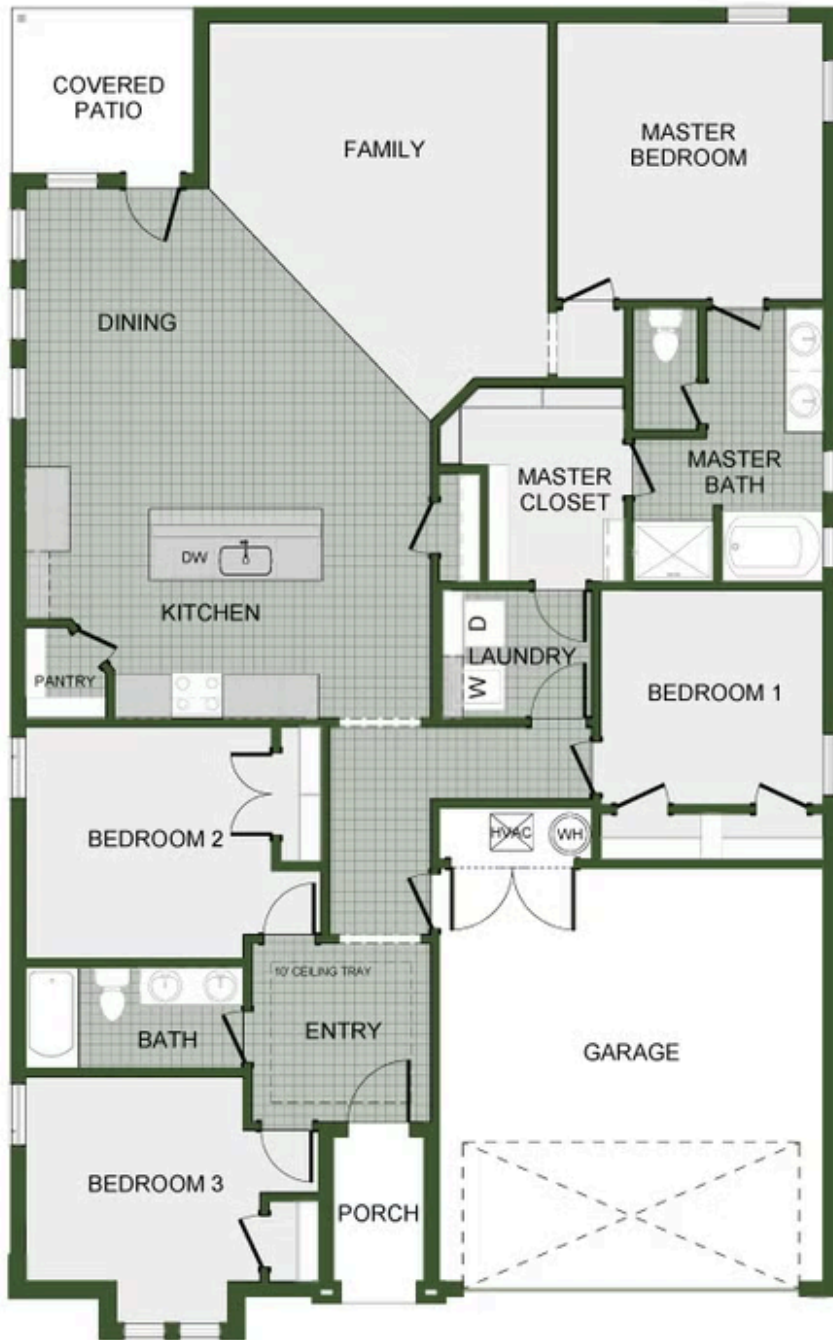
GREENSPACE



WALKING
TRAIL



PARK



1950-4