



STARTING AT **\$305,000** 🛏 4 - 5 🚿 2.5 🚗 2 📏 2,360 FT²

The 2360-2S is our most versatile floor plan yet! With an option for a loft or a fifth bedroom, a flex space perfect for that home gym or office you've been needing, and an open concept downstairs, this home will fit any family. Check out the sky-high ceilings in the entry, drop zone coming in from the garage, and the ample storage - what's not to love!

AMENITIES



SIDEWALKS



COMMUNITY
POND



RURAL
DEVELOPMENT FINANCING
GREENSPACE



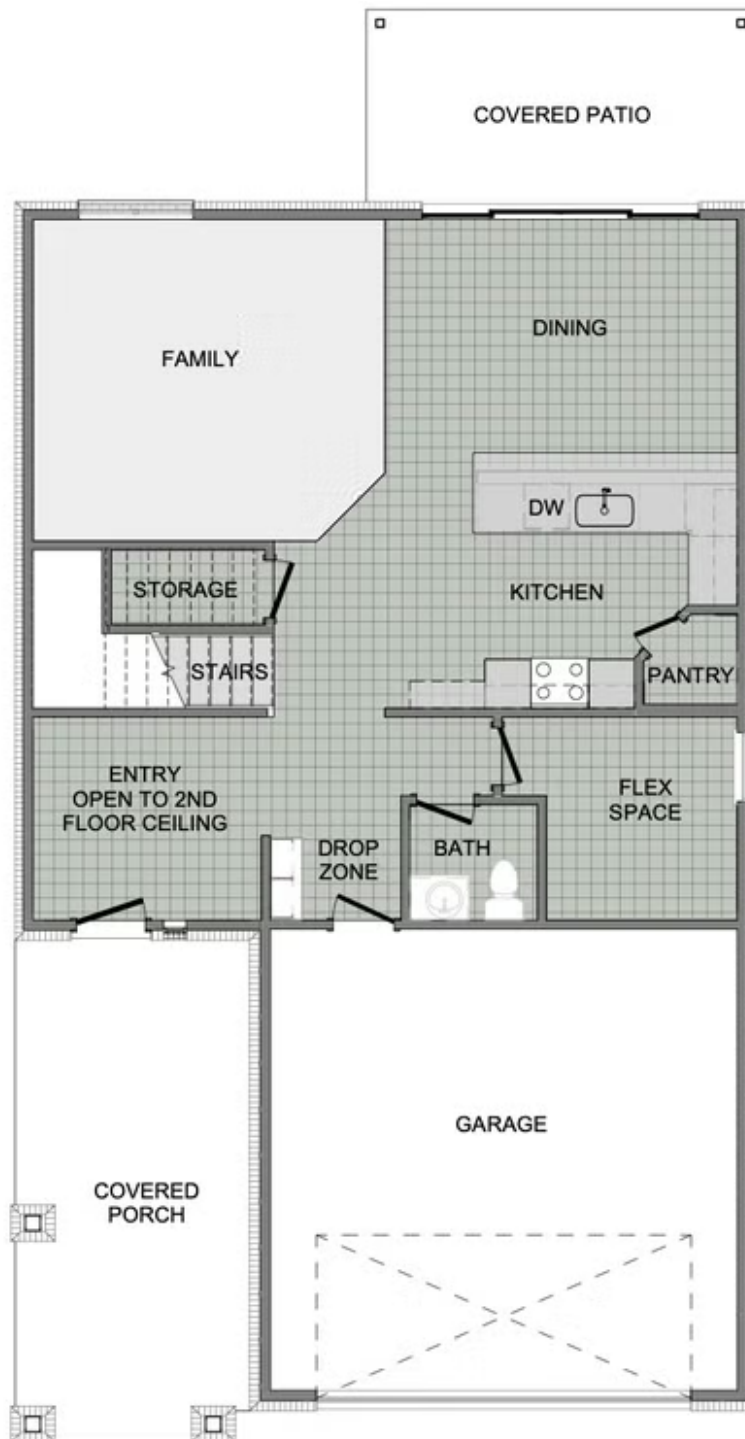
WALKING
TRAIL



PARK

2360 Two Story

Floor Plan



1ST FLOOR



2ND FLOOR - LOFT OPTION



2ND FLOOR - 5 BED OPTION