



PRICED AT \$327,658 🛏 4 🚿 2.5 🚗 2 📏 2366 FT<sup>2</sup>

The 2360-2S is our most versatile floor plan yet! With the added space of a loft, a flex space perfect for that home gym or office you've been needing, and an open concept downstairs, this home will fit any family. Check out the sky-high ceilings in the entry, drop zone coming in from the garage, and the ample storage - what's not to love!

#### AMENITIES



SIDEWALKS



COMMUNITY  
POND



RURAL  
DEVELOPMENT FINANCING



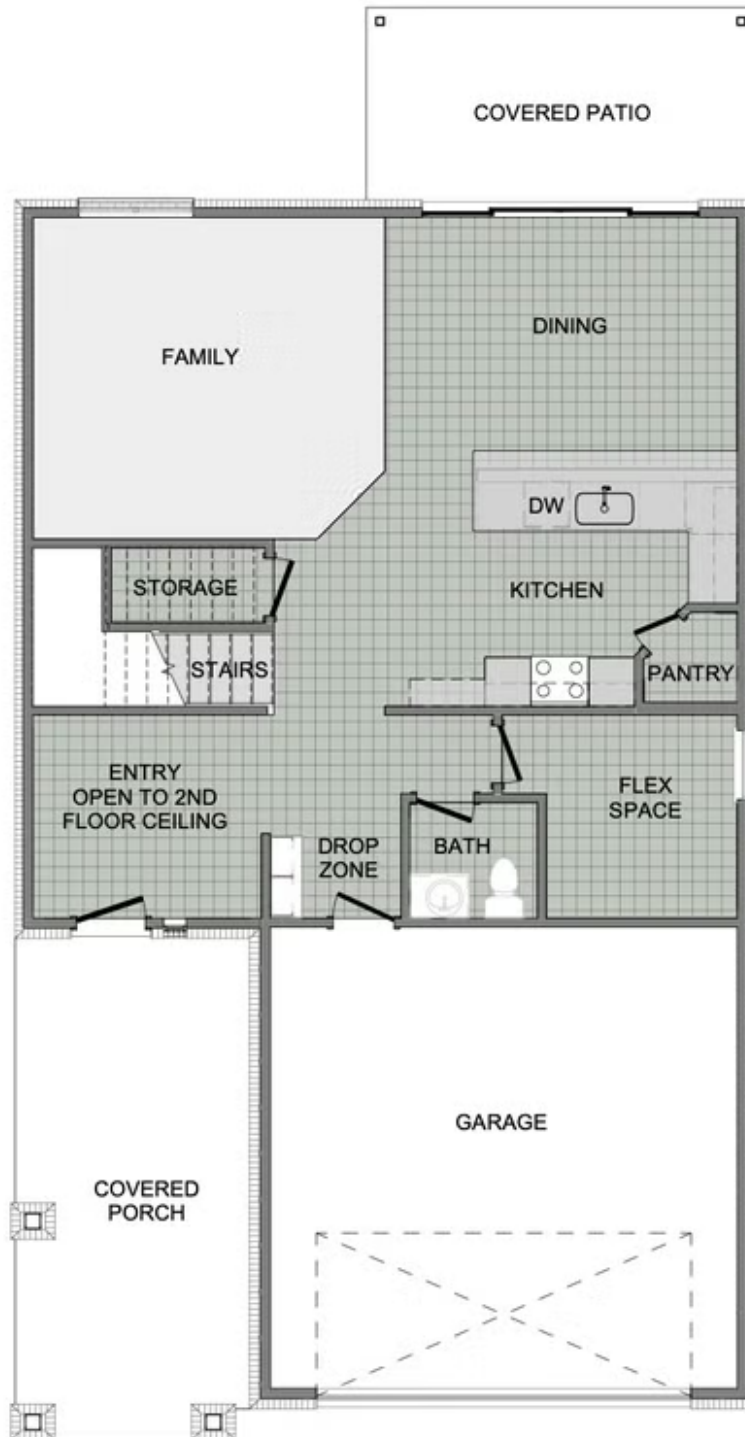
GREENSPACE



WALKING  
TRAIL



PARK



1ST FLOOR



2ND FLOOR - LOFT OPTION