

STARTING AT **\$339,000**  4  3  2  2,410 FT²

The 2410 series is a 4 bed, 3 bath, 2410 square feet home with a large family, dining, and kitchen area with a bar-style counter ideal for hosting guests. An open design layout creates a welcoming space for family time. The large primary suite offers a spacious walk-in closet, double bathroom vanities, and a separate tub and shower.

AMENITIES



SIDEWALKS



COMMUNITY
POND



RURAL
DEVELOPMENT FINANCING



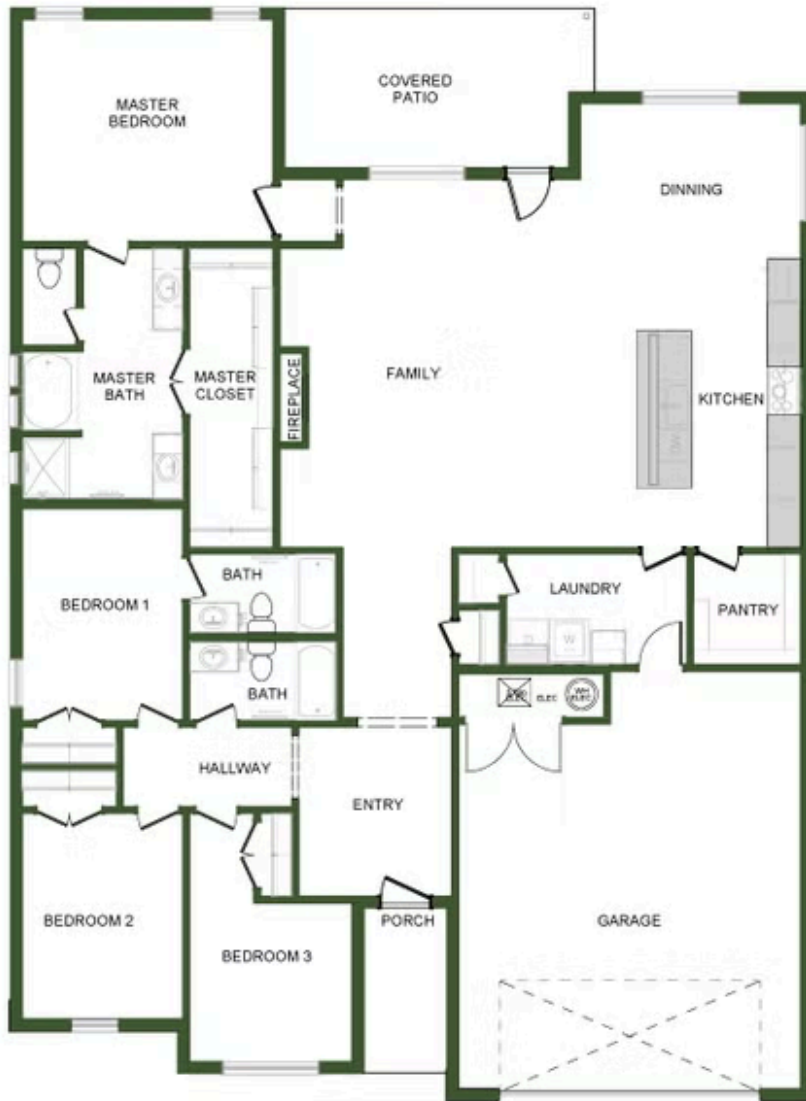
GREENSPACE



WALKING
TRAIL



PARK



2410