



SOUTHWIND TRAIL

404 Sophia Jane Lane

Duenweg, MO 64841



PRICED AT \$393,576  4  3.0  2  2410 FT<sup>2</sup>

The 2410 Series offers a large family, dining, and kitchen area with a bar-style counter that is ideal for hosting guests. An open design layout and fireplace create a welcoming space for family time. The large primary suite offers a spacious walk-in closet, double bathroom vanities, and separate tub and shower.

#### AMENITIES



SIDEWALKS



COMMUNITY  
POND



RURAL  
DEVELOPMENT FINANCING



GREENSPACE



WALKING  
TRAIL

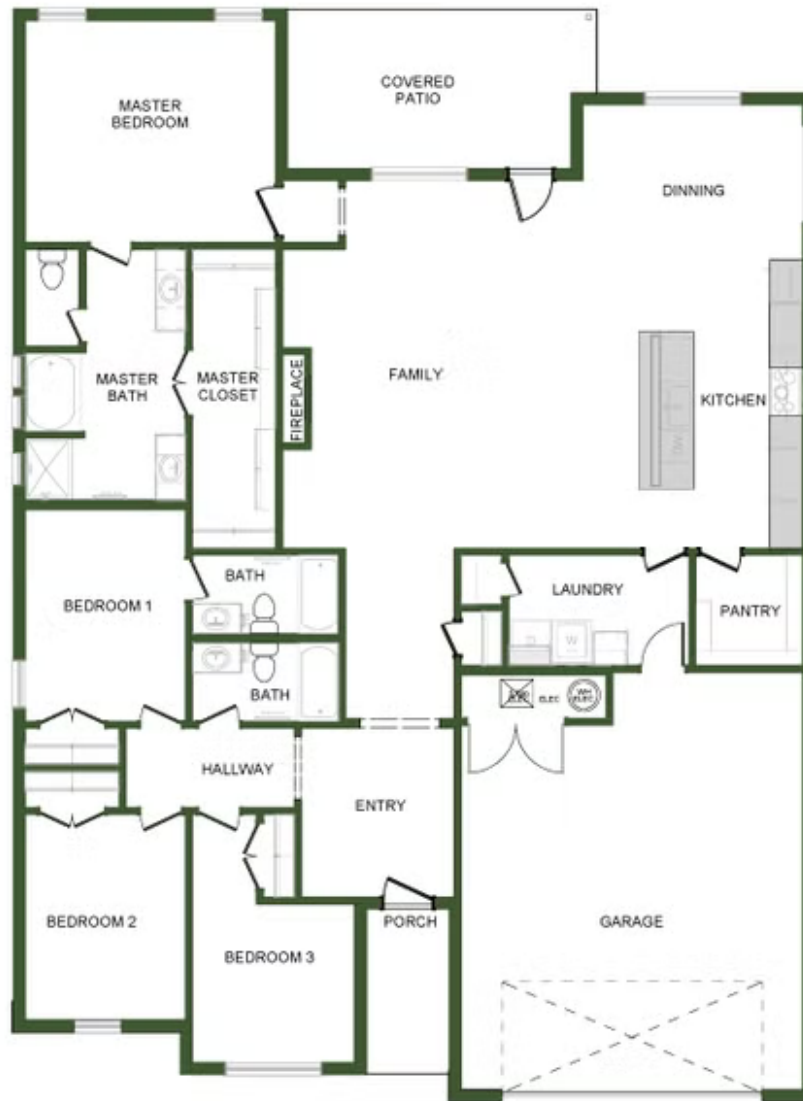


PARK

Monday - Saturday: 10 am-6pm  
417-952-0369  
schubermitchell.com

Materials, specifications, plans, designs, prices, premiums, options & sales programs may change without notice or obligation. All renderings, floor plans, and maps are artist's conception and may not depict actual buildings, fencing, walks, driveways, or landscaping.





2410