



EMERALD GLADES

2575

Floor Plan

STARTING AT \$372,000  5  3  2  2,576 FT²

The 2575 floorplan features a 4 to 5 bedroom, 3-bathroom with over 2,500 square feet of living space. This premium floorplan is designed to elevate your living experience with its exceptional features and thoughtful design. Step into a home with impressive 15' high vaulted ceilings, complemented by a stylish stained box beam, and 8' tall front and back doors that enhance ...

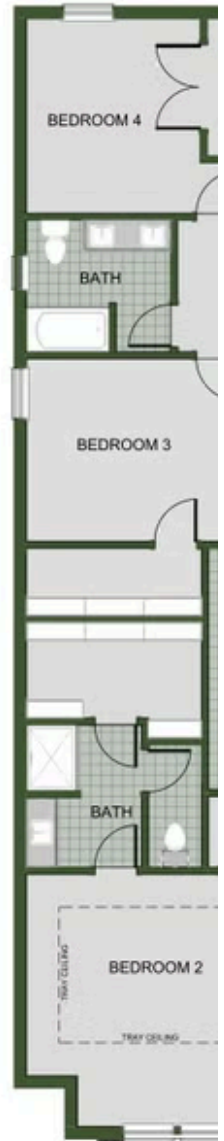
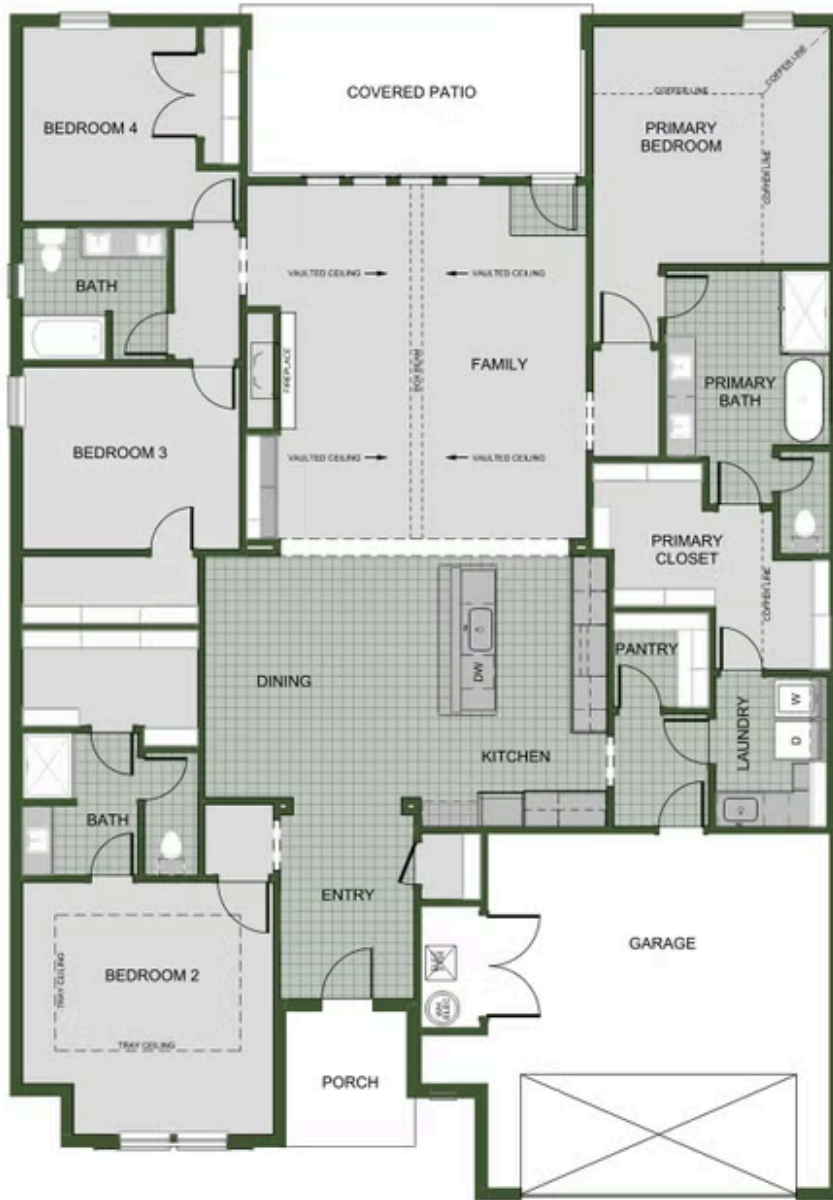
AMENITIES



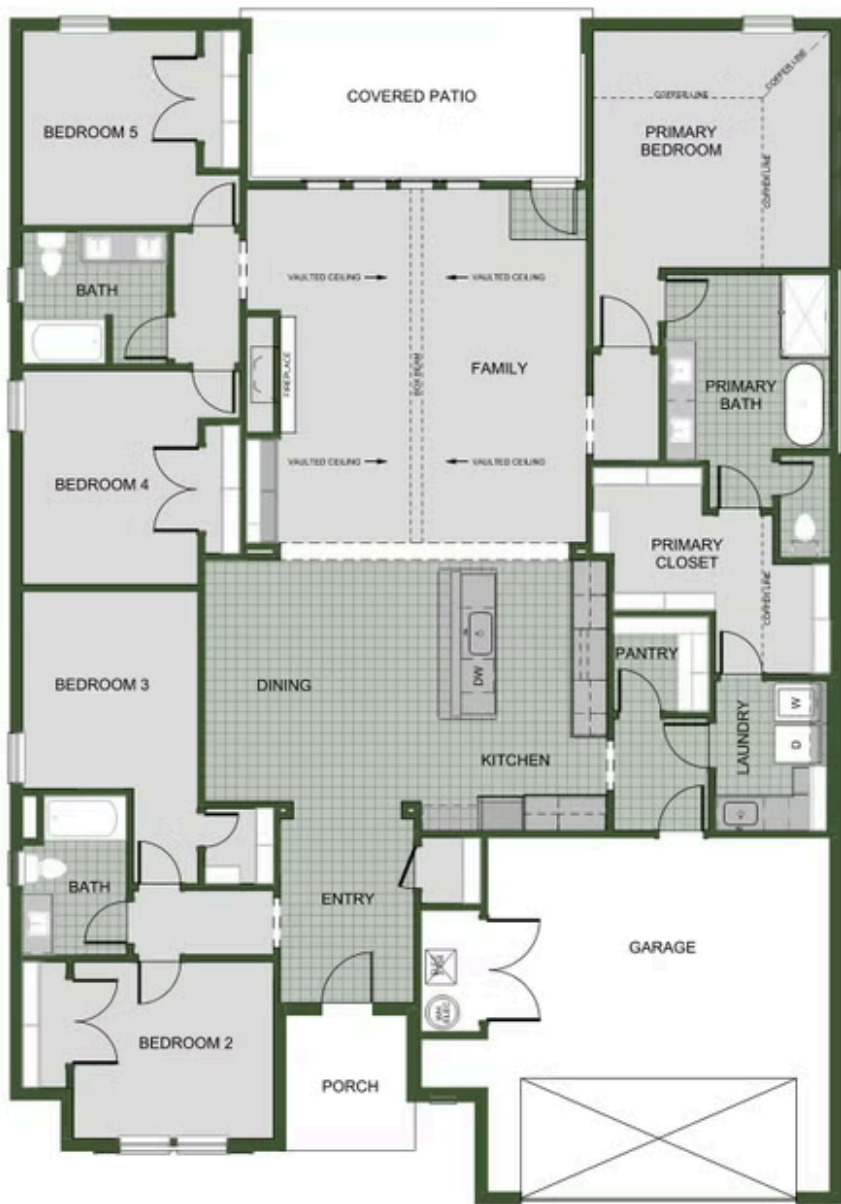
POOL



PICKLEBALL
COURTS



2ND MASTER SUITE



Monday - Saturday: 10 am-6pm
417-952-0369
schubermitchell.com

Materials, specifications, plans, designs, prices, premiums, options & sales programs may change without notice or obligation. All renderings, floor plans, and maps are artist's conception and may not depict actual buildings, fencing, walks, driveways, or landscaping.

