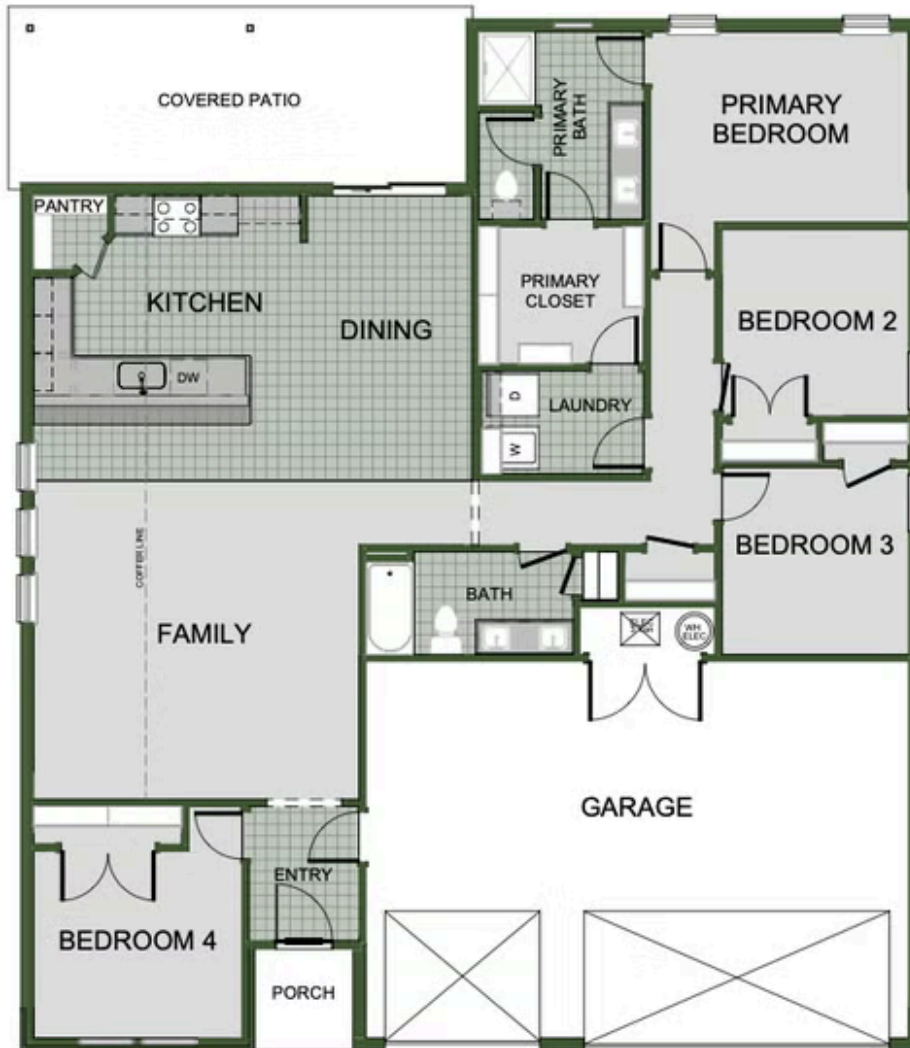




RIVERTON PARK
1750-4 3-Car
Floor Plan

STARTING AT **\$329,000**  4  2  3  1,750 FT²

This floor plan is a 3-4 bedroom, 2-bathroom 1750 square feet home featuring 10-foot ceilings in the entryway, kitchen, and living area, plus dual vanities in the primary bathroom. The 1750 3-Car Series delivers the luxury of a larger floor plan with an included 3rd car garage. Enjoy the flexible floor plan with the choice of 3 or 4 bedrooms to find the best fit for your ...



4TH BEDROOM