



RIVERTON PARK

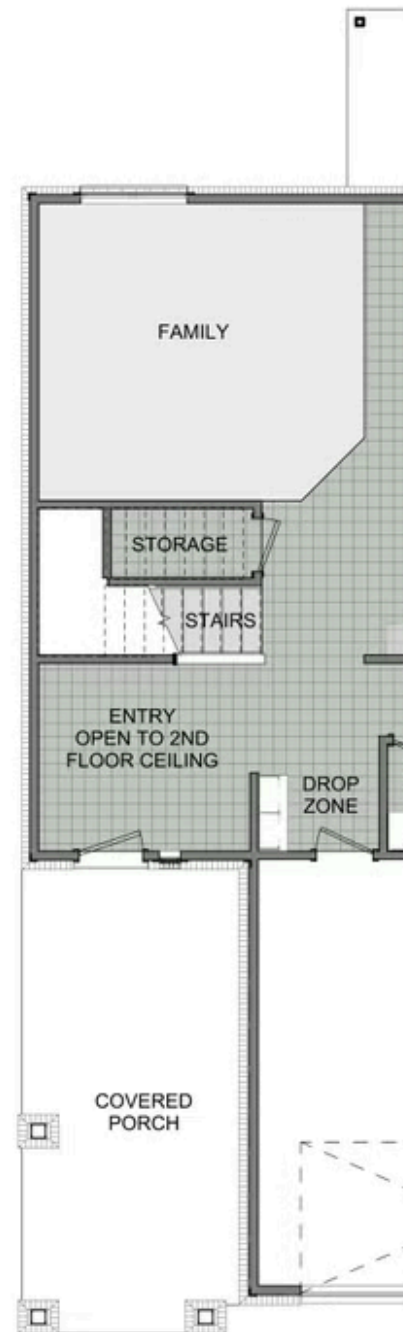
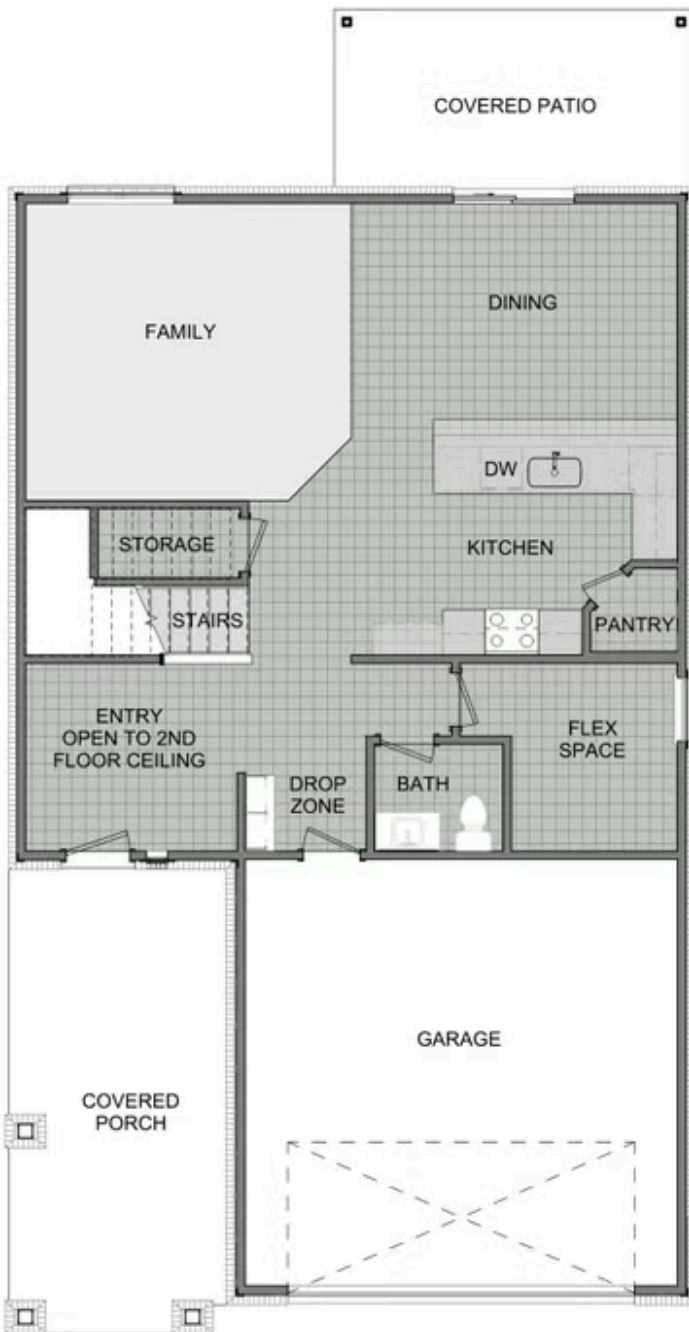
707 N. Baywood Dr.

Nixa, MO 65714

PRICED AT \$373,056  4  2.5  2  2360 FT<sup>2</sup>

This floor plan boasts 2360 square feet, 4 bedrooms, 2.5 bathrooms. This is one of the most versatile floor plans yet! With an option for a loft or a fifth bedroom, a flex space perfect for that home gym or office you've been needing, and an open concept downstairs, this home will fit any family. Check out the sky-high ceilings in the entry, the drop zone coming in from t...







2ND FLOOR - LOFT OPTION