



FINLEY CROSSING
1750-4 3-Car
Floor Plan

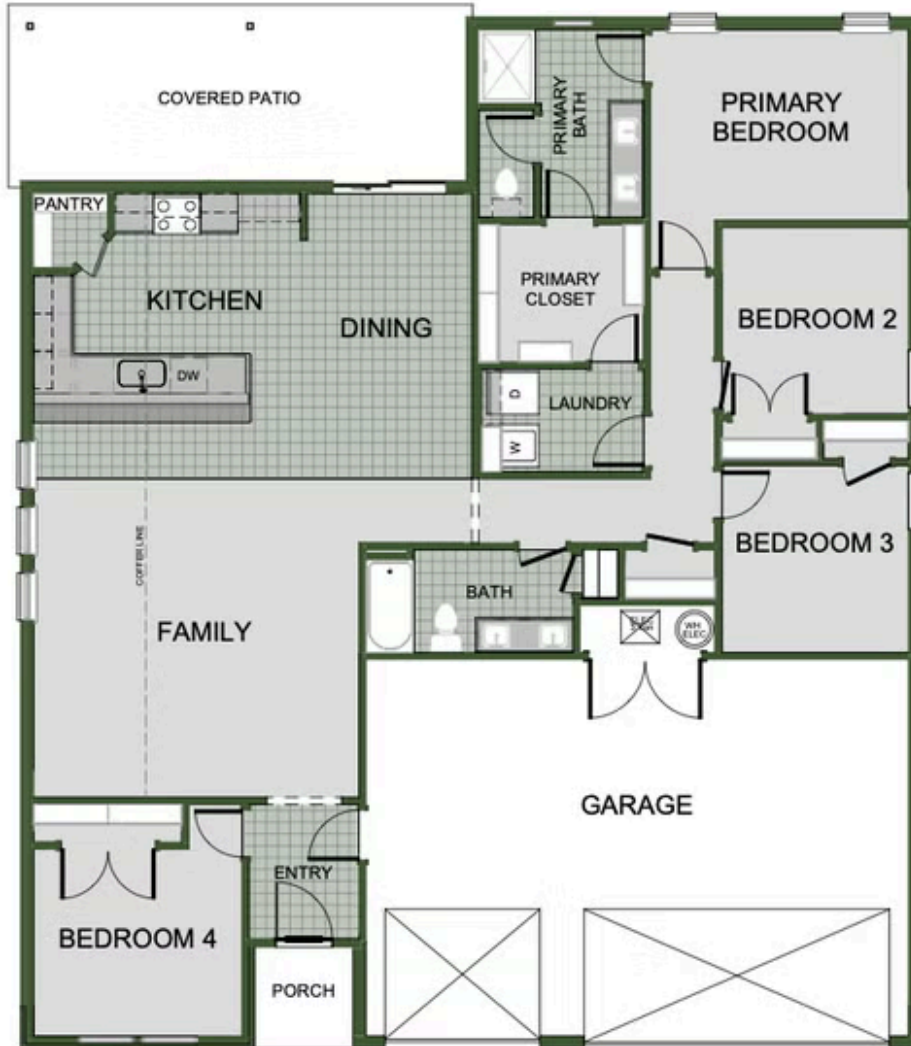
STARTING AT **\$333,000** 🛏️ 4 🚿 2 🏠 1,750 FT²

This floor plan is a 3 bedroom, 2 bathroom 1750 square feet home featuring 10-foot ceilings in the entryway, kitchen, and living area, plus dual vanities in the primary bathroom. The 1750 3-Car Series delivers the luxury of a larger floor plan with an included 3 car garage.

AMENITIES



SIDEWALKS



4TH BEDROOM