

STARTING AT **\$309,000**  4  2  2  1,729 FT²

This 4 bed, 2 bath 1729 square foot floor plan is ready to be filled with your family and friends! Connect with nature in this floor plan thanks to the cozy covered back patio just off the open concept family, dining, and kitchen area. Available space is truly maximized in this home with a kitchen pantry and dedicated laundry space, just off the oversized primary suite cl...

AMENITIES



POOL



SIDEWALKS



COMMUNITY
POND



GOLF CART
COMMUNITY

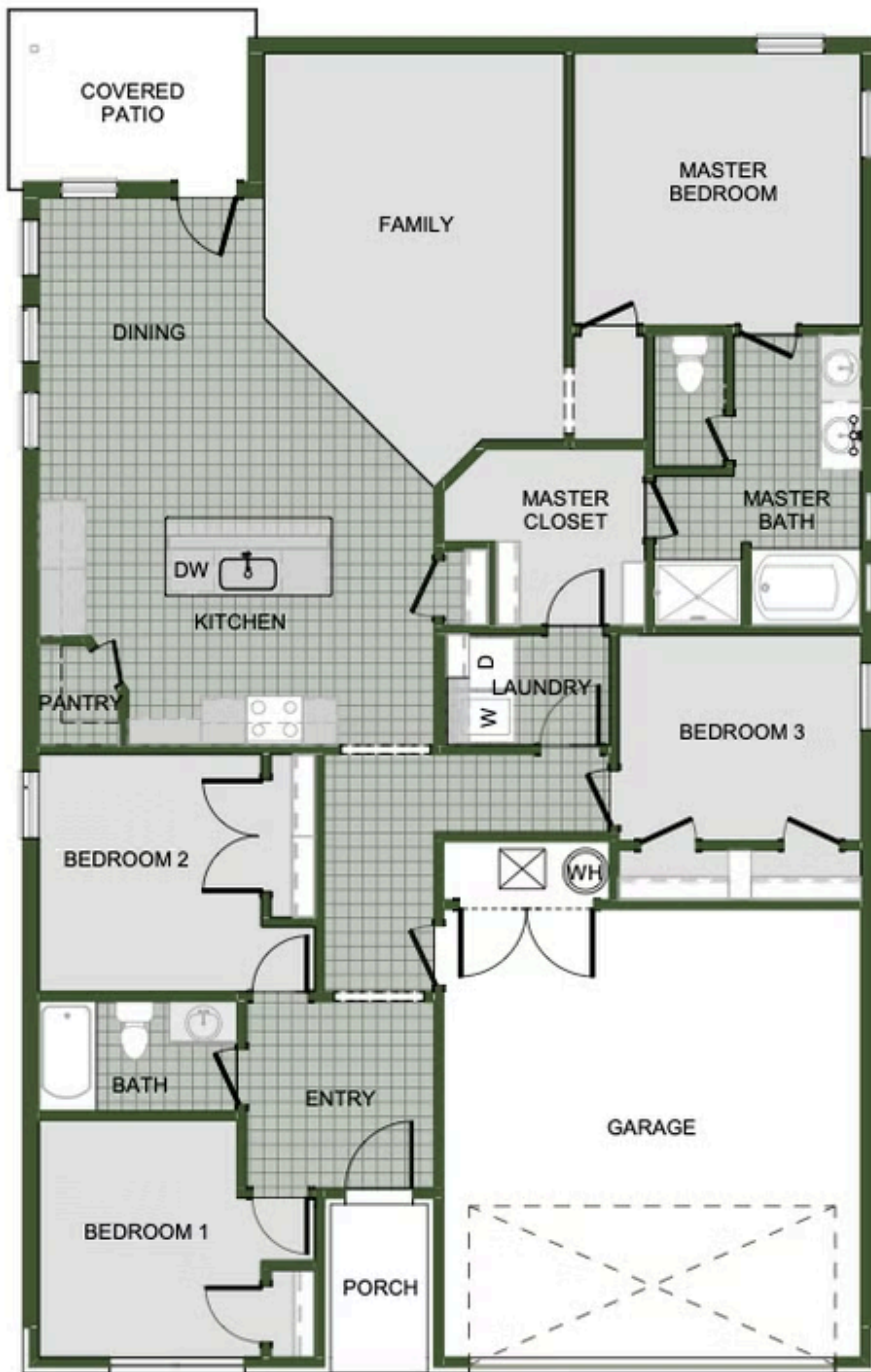


PARK



PICKLEBALL
COURTS





1729-4