

STARTING AT **\$363,000**  3 - 4  2  3  2,200 FT²

This 3 car, 3-4 bedroom, 2 bathroom, 2200 square feet home includes a corner pantry, room for bar seating, and a large covered back patio your family will enjoy. The open layout connects the kitchen, dining, and living areas, creating a welcoming space that's perfect for everyday living or hosting friends and family. The primary bathroom feature...

AMENITIES



POOL



SIDEWALKS



COMMUNITY
POND



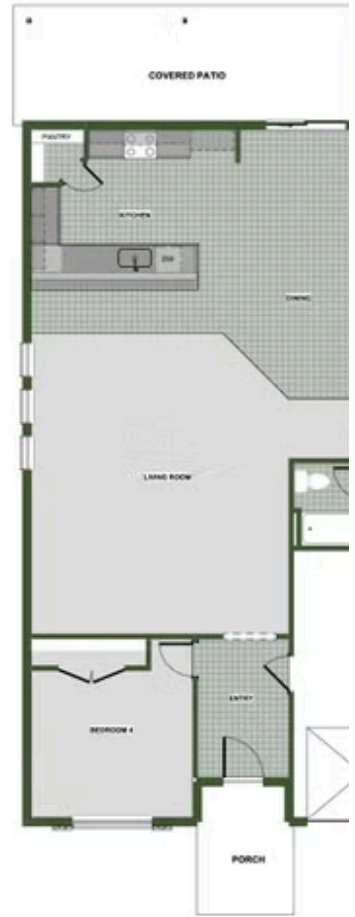
GOLF CART
COMMUNITY



PARK



PICKLEBALL
COURTS



4TH BEDROOM OPTION

