



WHISKEY RIDGE

6211 N. 30th St.

Broken Arrow, OK 74014

PRICED AT **\$436,944**  5  3.0  2  2576 FT<sup>2</sup>

The 2575 floorplan features a 4 to 5 bedroom, 3-bathroom with over 2,500 square feet of living space. This premium floorplan is designed to elevate your living experience with its exceptional features and thoughtful design. Step into a home with impressive 15' high vaulted ceilings, complemented by a stylish stained box beam, and 8' tall front and back doors that enhance ...

#### AMENITIES



POOL



SIDEWALKS



COMMUNITY  
POND



GOLF CART  
COMMUNITY

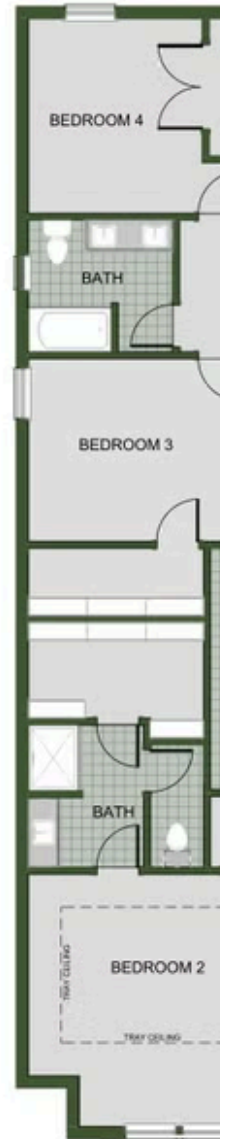
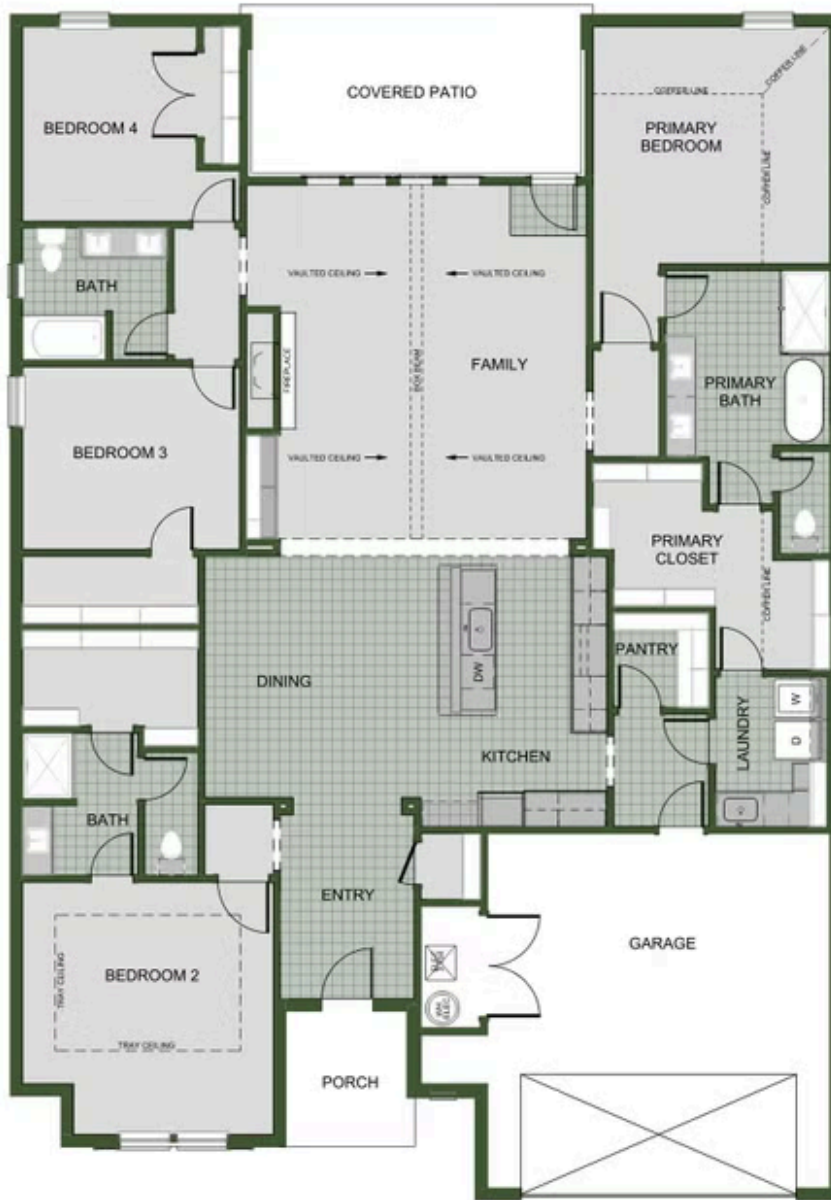


PARK

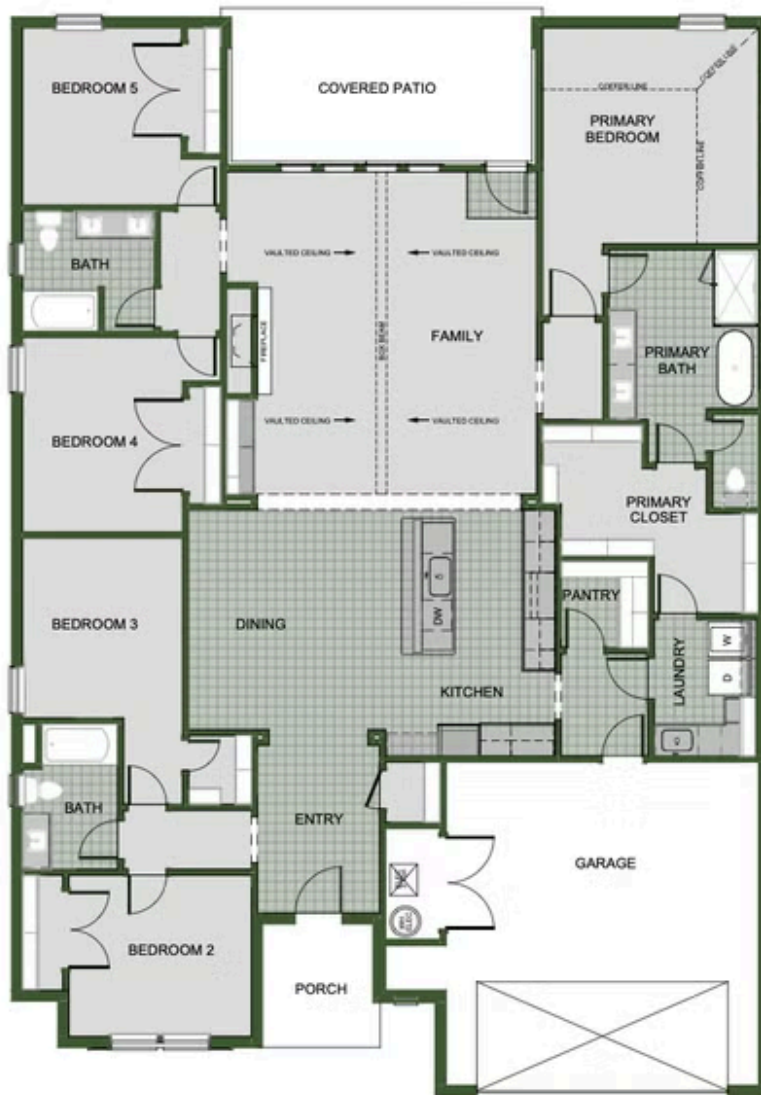


PICKLEBALL  
COURTS

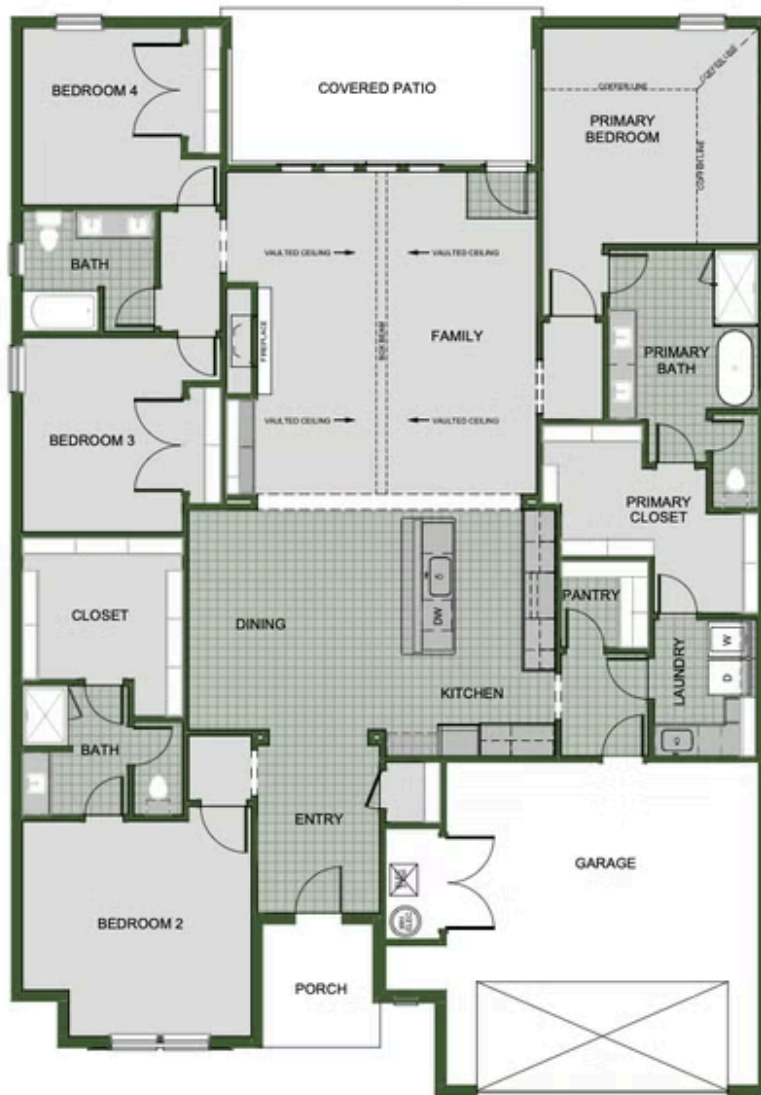




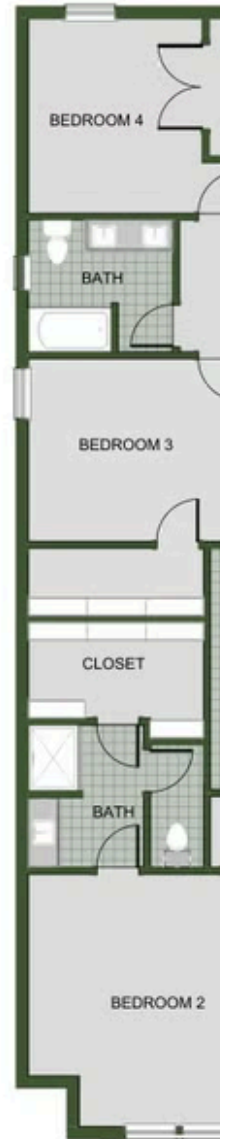
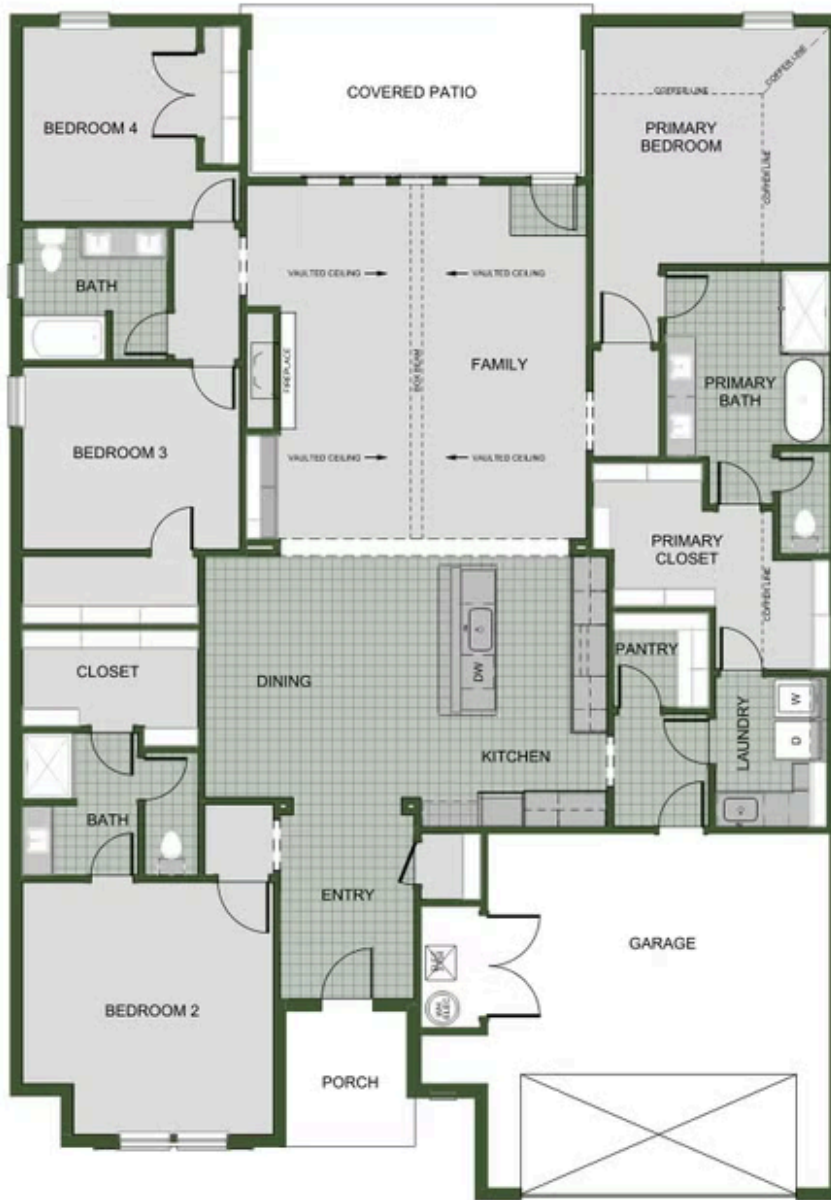
## 2ND MASTER SUITE



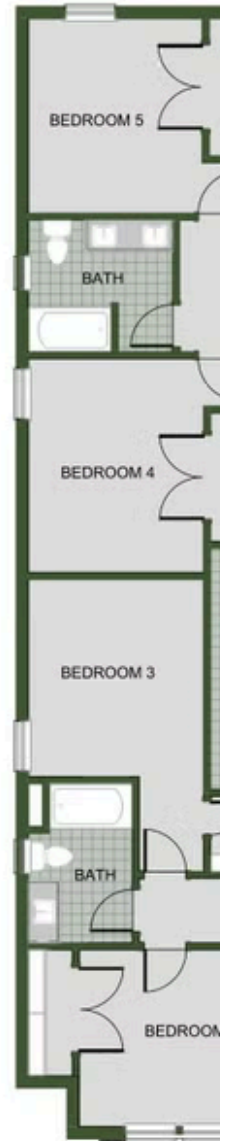
5TH BEDROOM



## 2ND MASTER SUITE







EQUAL HOUSING  
OPPORTUNITY