



FRAZIER MEADOWS

2800

Floor Plan

STARTING AT \$460,000  4 - 5  3  2  2,796 - 2,834 FT²

The 2800 offers 4–5 bedrooms, 3 bathrooms, and about 2,800 square feet of single story living. Key features include wood plank tray ceilings, a vaulted living room with a stained box beam, a vaulted back porch, and an oversized pantry. The open kitchen–dining–living layout is enhanced by an accent wall dining area. Buyers can choose a second living space, a second primary...

AMENITIES



POOL



COMMUNITY
POND



WALKING
TRAIL



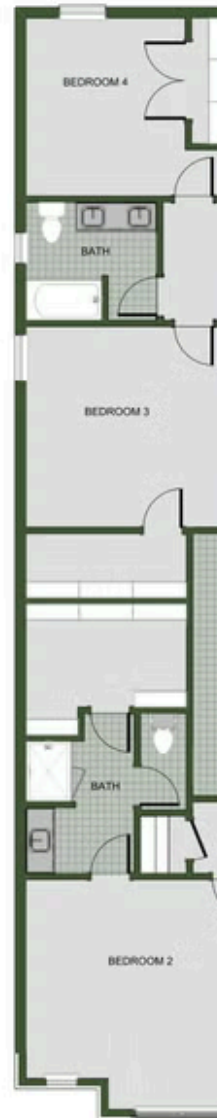
PARK



PICKLEBALL
COURTS



2ND LIVING ROOM



2ND MASTER SUITE



5TH BEDROOM