



PATTERSON FARMS

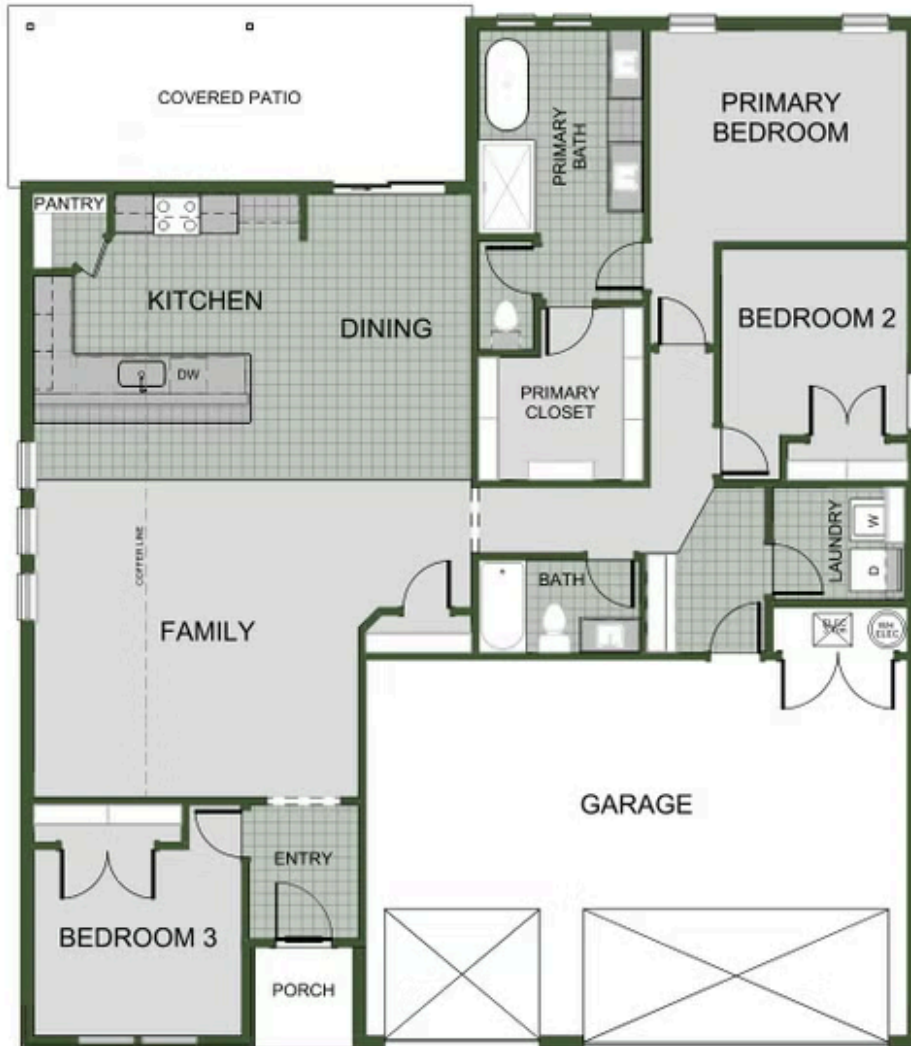
1750 3-Car

Floor Plan

STARTING AT **\$316,000**  3  2  3  1,752 FT²

This floor plan is a 3 bedroom, 2 bathroom 1750 square feet home featuring 10-foot ceilings in the entryway, kitchen, and living area, plus dual vanities in the primary bathroom. The 1750 3-Car Series delivers the luxury of a larger floor plan with an included 3 car garage.





3 BEDROOM