



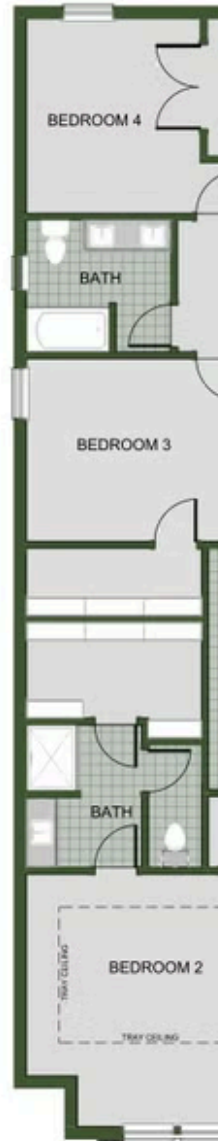
RIVERTON PARK

2575

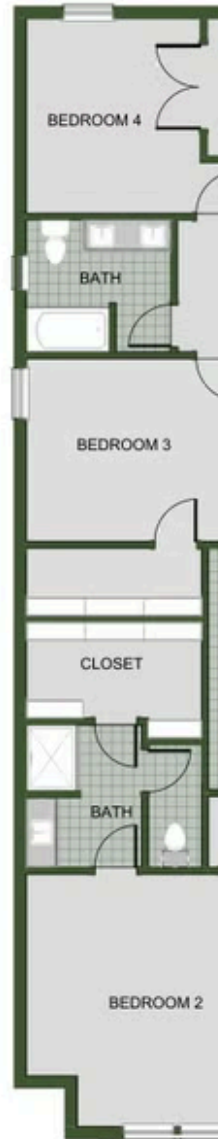
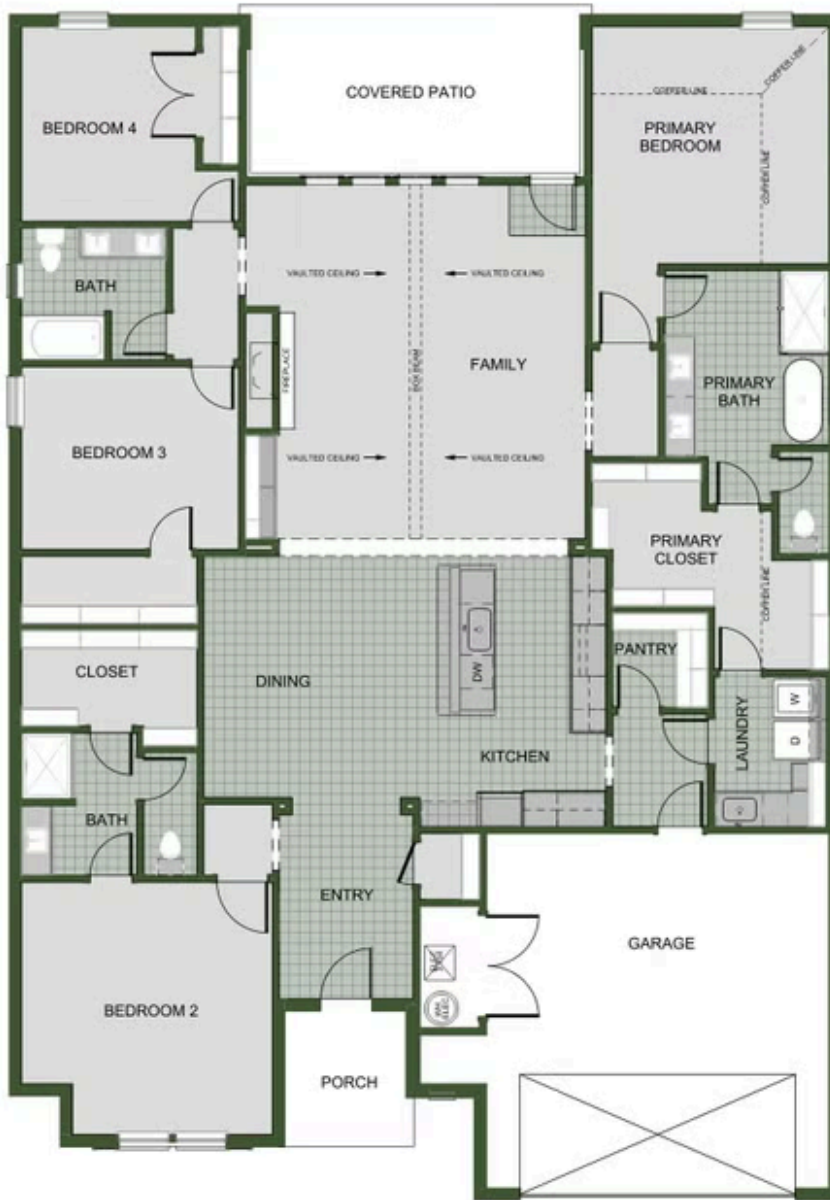
Floor Plan

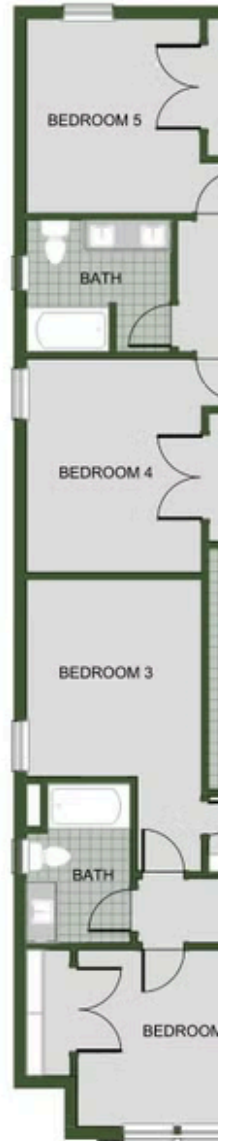
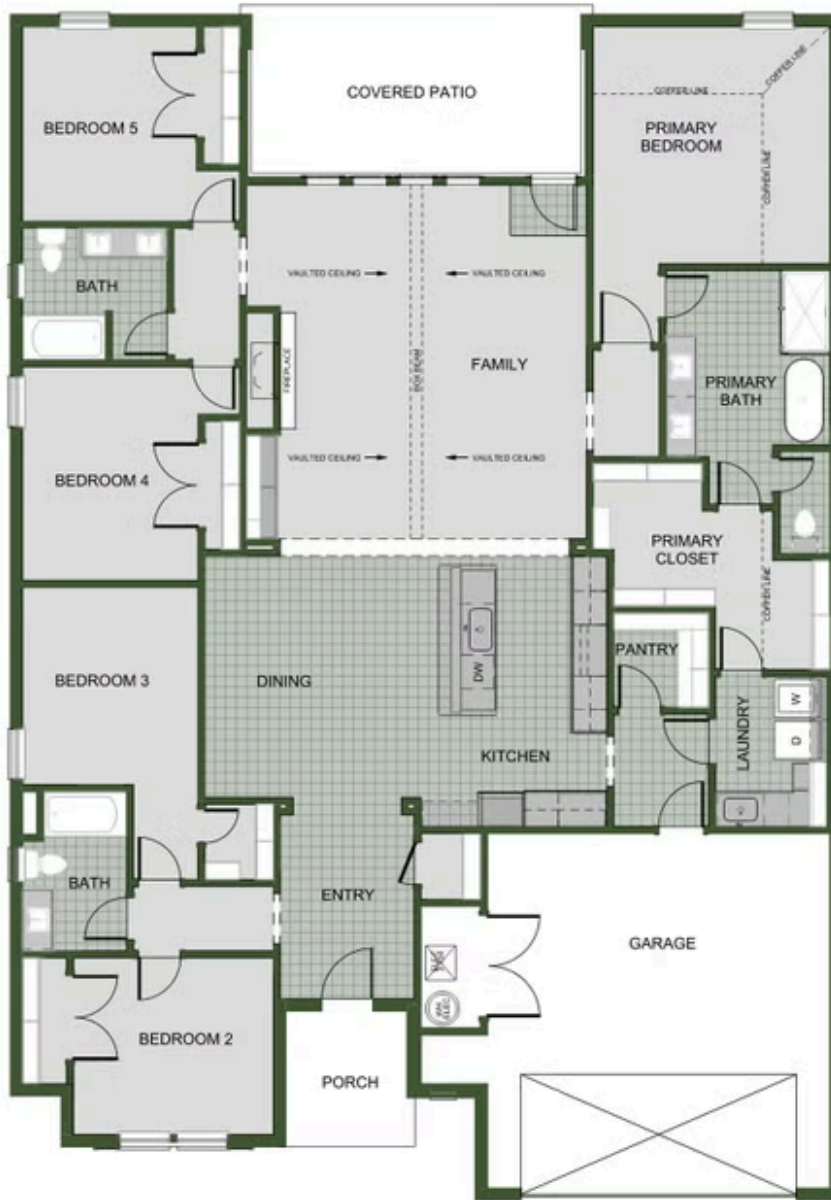
STARTING AT **\$425,000**  5  3  2  2,576 FT²

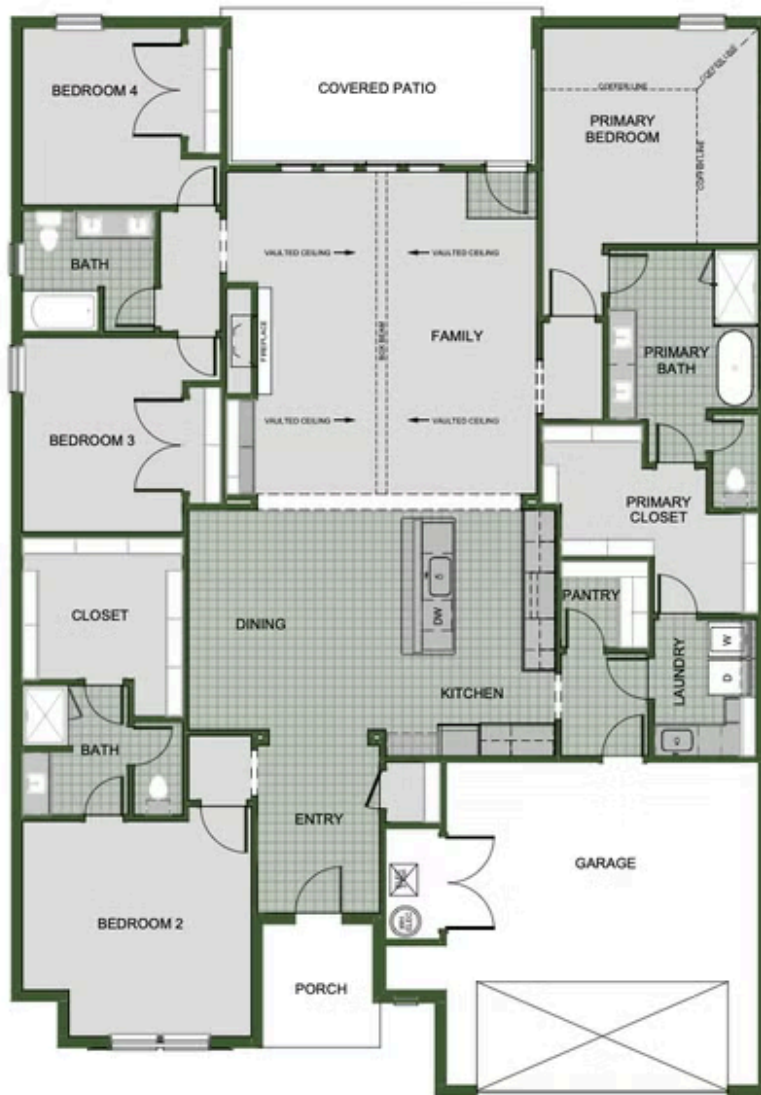
The 2575 floorplan features a 4 to 5 bedroom, 3-bathroom with over 2,500 square feet of living space. This premium floorplan is designed to elevate your living experience with its exceptional features and thoughtful design. Step into a home with impressive 15' high vaulted ceilings, complemented by a stylish stained box beam, and 8' tall front and back doors that enhance ...



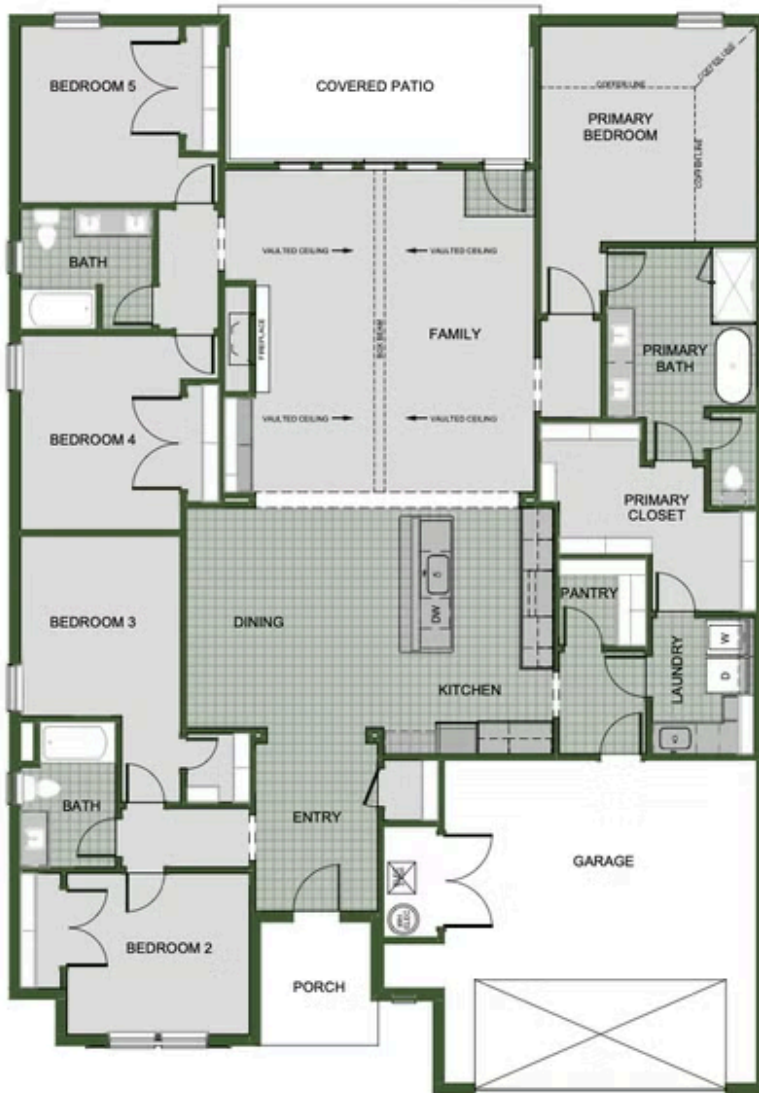
2ND MASTER SUITE







2ND MASTER SUITE



5TH BEDROOM